

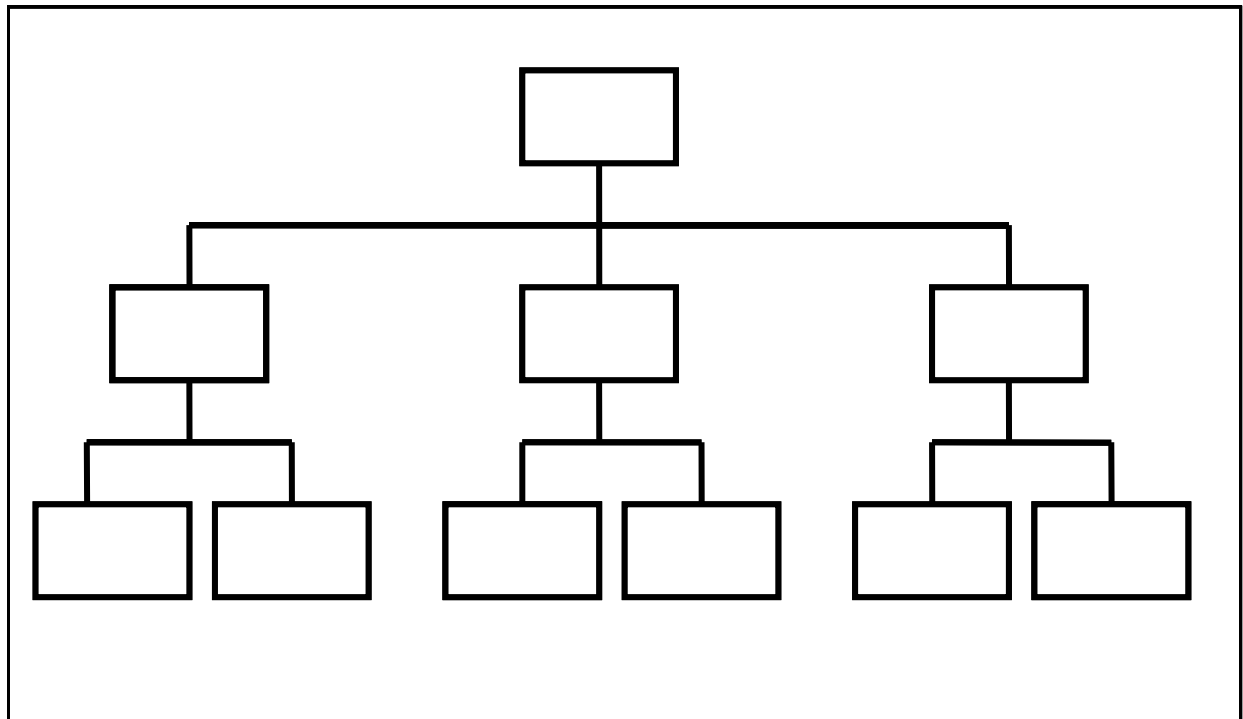
# Diagrams: Networks and Organizations

MJ Peterson

International Dimensions of Ethics Education in Science and Engineering  
Background Reading  
Version 2; August 2009

---

Figure 1. Typical Bureaucratic Organization



---

This was created by the International Dimensions of Ethics Education in Science and Engineering (IDEESE) Project at the University of Massachusetts Amherst with support from the National Science Foundation under grant number 0734887. Any opinions, findings, conclusions or recommendations expressed in this material are those of the author(s) and do not necessarily reflect the views of the National Science Foundation. More information about the IDEESE can be found at <http://www.umass.edu/sts/ethics>.

This should be cited as: M.J. Peterson. 2009. "Diagrams: Networks and Organizations." International Dimensions of Ethics Education in Science and Engineering. Available [www.umass.edu/sts/ethics](http://www.umass.edu/sts/ethics).



© 2009 IDEESE Project

Figure 2. Typical Network

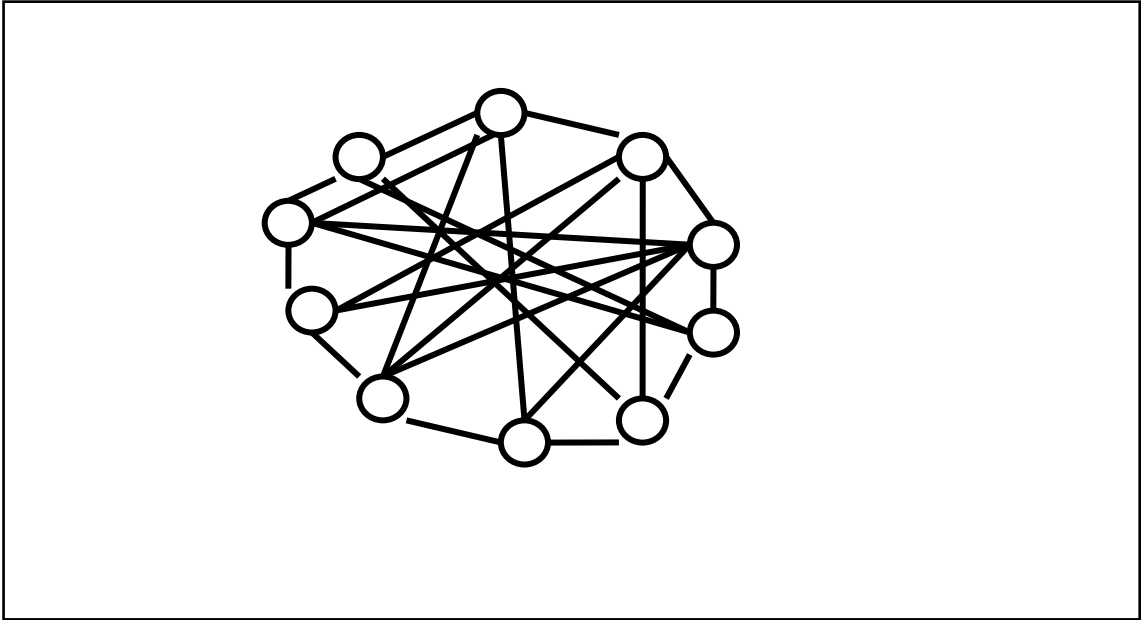
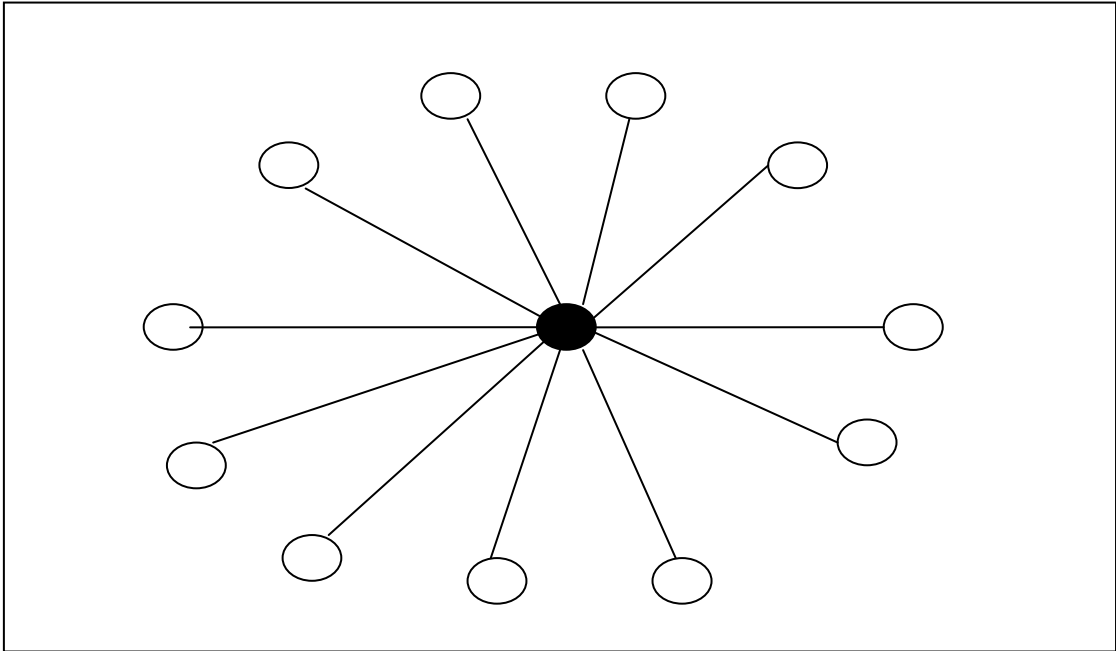


Figure 3. Network with a communications hub



<end>