

Diagrams of Scientific Organizations

MJ Peterson

International Dimensions of Ethics Education in Science and Engineering
Background Reading
Version 1; February 2008

This section includes Organizational Diagrams of:

- International Council of Scientific Unions
- Typical National Academy of Sciences
- Relations among UN Educational Scientific and Cultural Organization (UNESCO), Intergovernmental Oceanographic Commission (IOC), International Congress of Scientific Unions (ICSU) and Scientific Committee on Oceanographic Research (SCOR)
- Relations among International Telecommunications Union (ITU), Committee on Space Research (COSPAR), and IUCAF
- US National Academy of Sciences and National Research Council

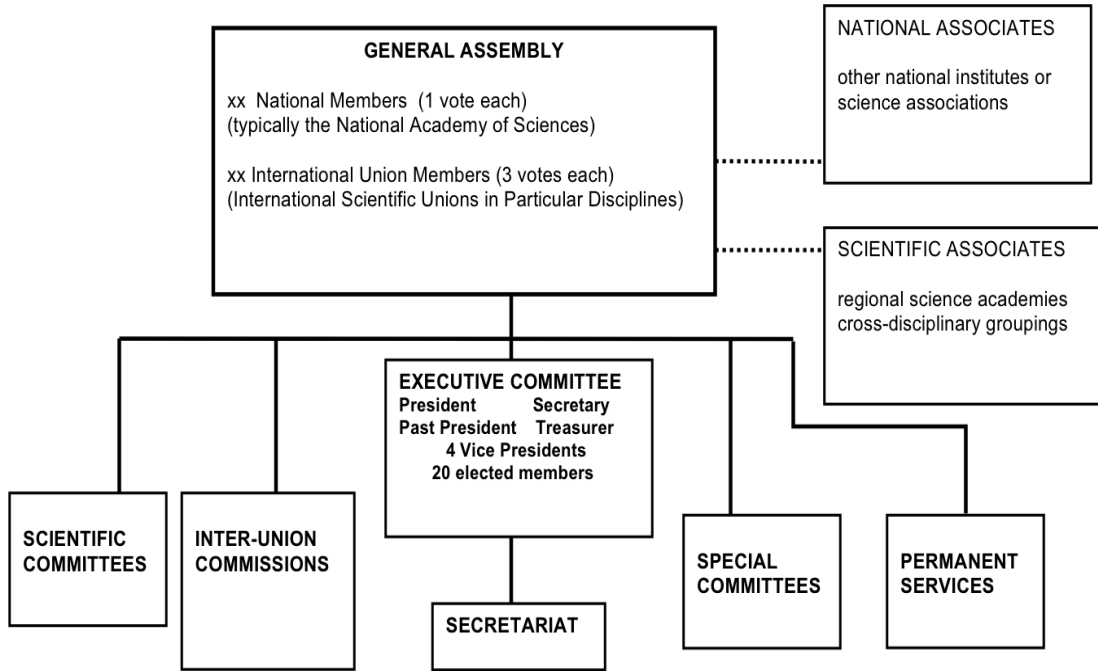
This was created by the International Dimensions of Ethics Education in Science and Engineering (IDEESE) Project at the University of Massachusetts Amherst with support from the National Science Foundation under grant number 0734887. Any opinions, findings, conclusions or recommendations expressed in this material are those of the author(s) and do not necessarily reflect the views of the National Science Foundation. More information about the IDEESE can be found at <http://www.umass.edu/sts/ethics>.

This should be cited as: M.J. Peterson. 2008. "Diagrams of Scientific Organizations." International Dimensions of Ethics Education in Science and Engineering. Available www.umass.edu/sts/ethics.

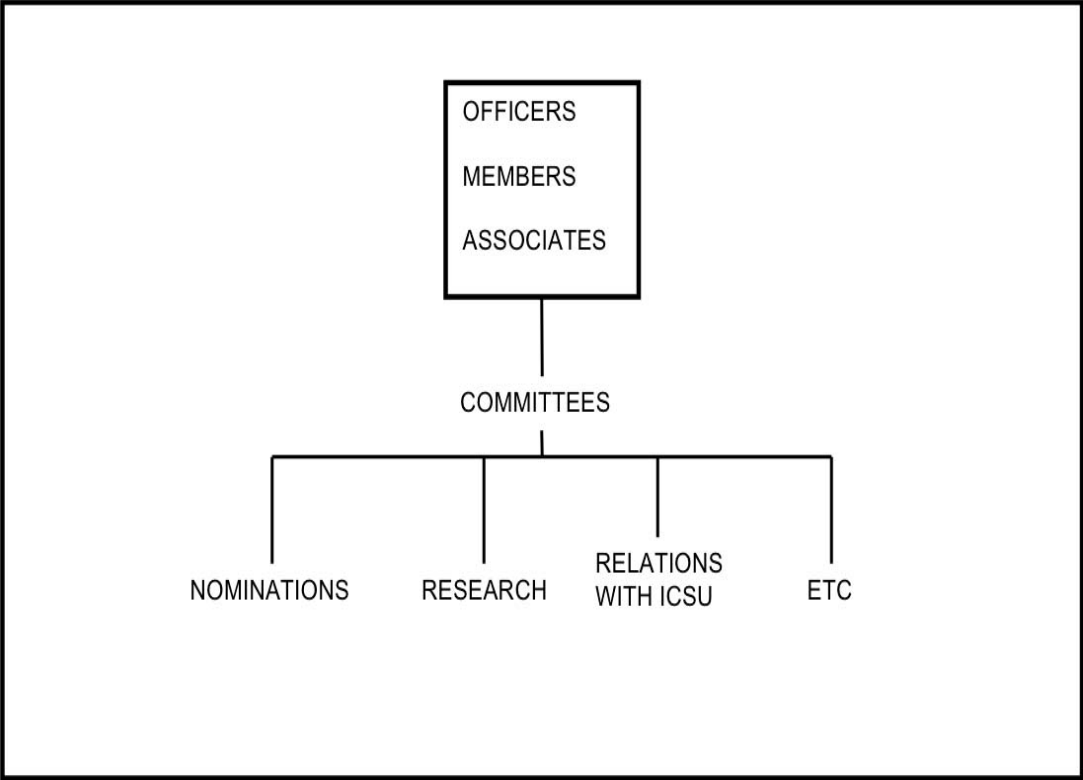


© 2008 IDEESE Project

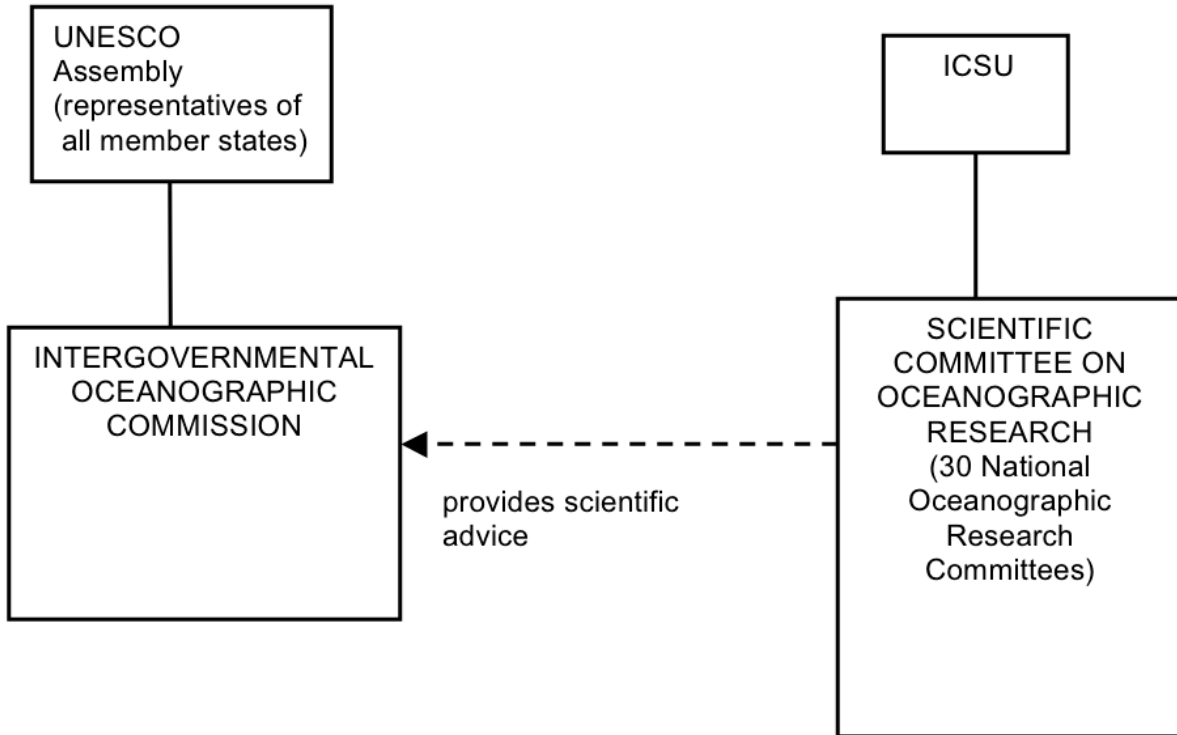
International Council of Scientific Unions



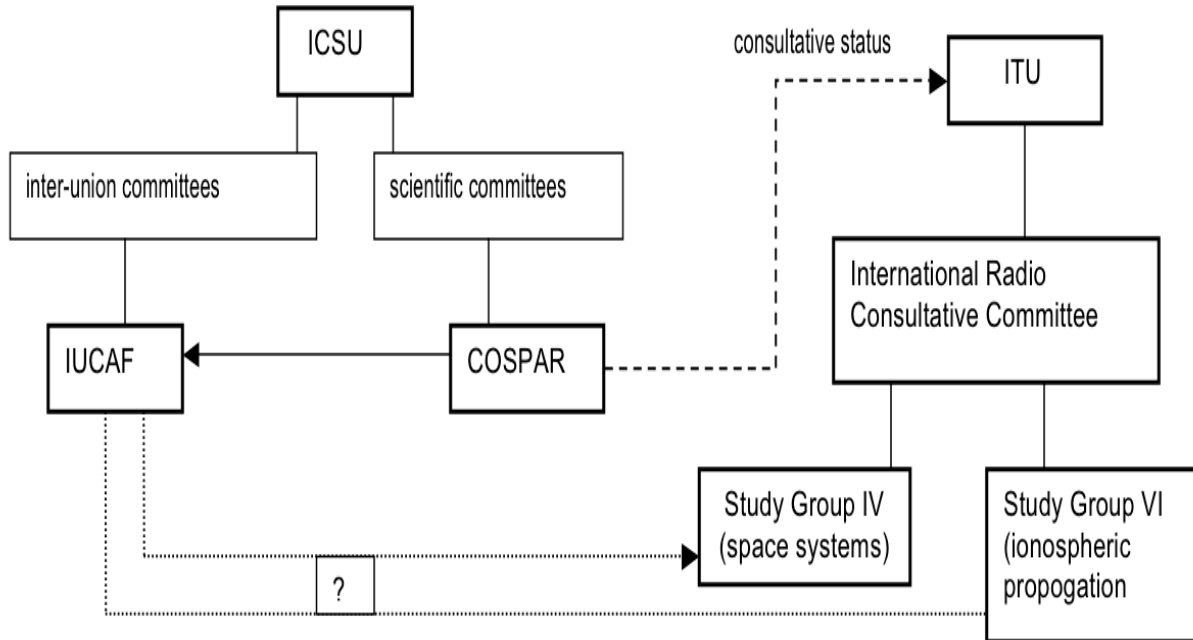
Typical National Academy of Sciences



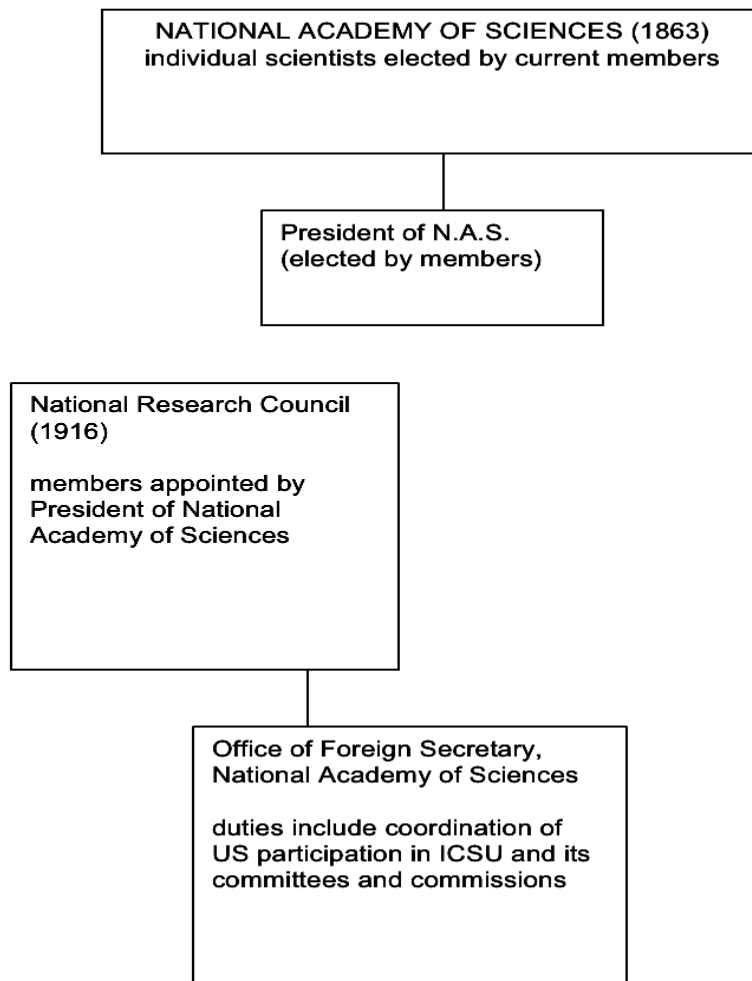
UNESCO, IOC, ICSU and SCOR



ITU, COSPAR, and IUCAF



US National Academy of Sciences and National Research Council



<end>