

2008

# Spectroscopic confirmation of an extreme starburst at redshift 4.547

P Capak

CL Carilli

N Lee

T Aldcroft

H Aussel

*See next page for additional authors*

Follow this and additional works at: [https://scholarworks.umass.edu/astro\\_faculty\\_pubs](https://scholarworks.umass.edu/astro_faculty_pubs)

 Part of the [Astrophysics and Astronomy Commons](#)

---

## Recommended Citation

Capak, P; Carilli, CL; Lee, N; Aldcroft, T; Aussel, H; Schinnerer, E; Wilson, GW; Yun, Min; Blain, A; Giavalisco, M; Ilbert, O; Kartaltepe, J; Lee, KS; McCracken, H; Mobasher, B; Salvato, M; Sasaki, S; Scott, KS; Sheth, K; Shioya, Y; Thompson, D; Elvis, M; Sanders, DB; Scoville, NZ; and Tanaguchi, Y, "Spectroscopic confirmation of an extreme starburst at redshift 4.547" (2008). *ASTROPHYSICAL JOURNAL LETTERS*. 173.  
[10.1086/590555](https://doi.org/10.1086/590555)

This Article is brought to you for free and open access by the Astronomy at ScholarWorks@UMass Amherst. It has been accepted for inclusion in Astronomy Department Faculty Publication Series by an authorized administrator of ScholarWorks@UMass Amherst. For more information, please contact [scholarworks@library.umass.edu](mailto:scholarworks@library.umass.edu).

---

**Authors**

P Capak, CL Carilli, N Lee, T Aldcroft, H Aussel, E Schinnerer, GW Wilson, Min Yun, A Blain, M Gialisco, O Ilbert, J Kartaltepe, KS Lee, H McCracken, B Mobasher, M Salvato, S Sasaki, KS Scott, K Sheth, Y Shioya, D Thompson, M Elvis, DB Sanders, NZ Scoville, and Y Tanaguchi

## SPECTROSCOPIC CONFIRMATION OF AN EXTREME STARBURST AT REDSHIFT 4.547\*

PETER CAPAK<sup>1,2</sup>, C.L. CARILLI<sup>3</sup>, N. LEE<sup>3</sup>, T. ALDCROFT<sup>4</sup>, H. AUSSEL<sup>5</sup>, E. SCHINNERER<sup>6</sup>, G.W. WILSON<sup>7</sup>, M.S. YUN<sup>7</sup>, A. BLAIN<sup>2</sup>, M. GIAVALISCO<sup>7</sup>, O. ILBERT<sup>8</sup>, J. KARTALTEPE<sup>8</sup>, K.-S. LEE<sup>9</sup>, H. MCCrackEN<sup>10</sup>, B. MOBASHER<sup>11</sup>, M. SALVATO<sup>2</sup>, S. SASAKI<sup>12</sup>, K.S. SCOTT<sup>7</sup>, K. SHETH<sup>1,2</sup>, Y. SHIOYA<sup>12</sup>, D. THOMPSON<sup>13</sup>, M. ELVIS<sup>4</sup>, D.B. SANDERS<sup>8</sup>, N.Z. SCOVILLE<sup>2</sup>, Y. TANAGUCHI<sup>12</sup>

*Draft version June 3, 2008*

### ABSTRACT

We report the spectroscopic confirmation of a sub-mm galaxy (SMG) at  $z = 4.547$  with an estimated  $L_{IR} = 0.5 - 2.0 \times 10^{13} L_{\odot}$ . The spectra, mid-IR, and X-ray properties indicate the bolometric luminosity is dominated by star formation at a rate of  $> 1000 M_{\odot} yr^{-1}$ . Multiple, spatially separated components are visible in the Ly-Alpha line with an observed velocity difference of up to 380 km/sec and the object morphology indicates a merger. The best fit spectral energy distribution and spectral line indicators suggest the object is 2-8 Myr old and contains  $> 10^{10} M_{\odot}$  of stellar mass. This object is a likely progenitor for the massive early type systems seen at  $z \sim 2$ .

*Subject headings:* galaxies: evolution, galaxies: formation, galaxies: high-redshift, galaxies: interactions, galaxies: starburst, submillimeter

### 1. INTRODUCTION

The study of galaxies detected at millimeter (mm) and sub-mm wavelengths is one of the most rapidly developing fields in observational astronomy. It is now known that a large fraction of the star formation activity is enshrouded in dust, with the star formation rate (SFR) being directly proportional to the far infrared (FIR) luminosity of galaxies, modulo possible contributions from an Active Galactic Nuclei (AGN) (Hughes et al. 1998). Surveys performed at mm wavelengths directly probe the FIR luminosity, and hence the amount of star formation. Furthermore, the shape of the galaxy spectral energy distributions (SEDs) at rest-frame mm wavelengths results in a negative K-correction between  $0.5 < z < 10$ . Therefore a flux limited survey is equivalent to a SFR limited

survey at these redshifts (Blain et al. 2002).

The current redshift distribution of mm galaxies peaks at  $z \sim 2$ , with very few galaxies at  $z > 3$  (Chapman et al. 2005; Pope et al. 2005; Aretxaga et al. 2007). However, the small bandwidth of current mm wave spectrographs makes it very difficult to measure redshifts directly, and the low angular resolution of mm single dish imaging leads to multiple optical candidates for the same source. As a result, mm surveys have relied on high resolution radio data to identify the optical counterparts for subsequent spectroscopic follow-up. This leaves 35 – 70% of the population of mm-selected galaxies at milli-Jansky flux levels unidentified and potentially at higher redshift (Wang et al. 2007; Younger et al. 2007).

In this paper we report the discovery of a mm galaxy with a spectroscopic redshift of  $z = 4.547$  that appears to be dominated by star formation. This is the highest redshift galaxy detected at mm wavelengths not associated with an optically bright quasar. The object was independently selected as a Lyman-break galaxy (Lee et al. 2008) for spectroscopic followup, a mm source, and a radio source (Carilli et al. 2008). The source reported here is unusual for mm sources because it has several nearby optically bright counterparts which were selected as V band dropouts and is unusually luminous which allows for a radio detection. However, the confirmation of this object suggests the population of sources with similar radio to mm flux ratios and optical colors may also be at high redshifts.

We assume a  $H_0 = 70$ ,  $\Omega_v = 0.7$ ,  $\Omega_m = 0.3$  cosmology and a star formation rate integrated across a Salpeter (1955) IMF from 0.1-100  $M_{\odot}$  throughout this paper.

### 2. DATA

Observations at  $\lambda = 1.1$ mm with an average RMS noise of 1.3mJy were obtained with the AzTEC (Wilson et al. 2008) camera at the the James Clerk Maxwell Telescope (JCMT) (Scott et al. 2008). Additional observations were obtained by the MAMBO camera on the IRAM 30m telescope with an RMS of 0.67 mJy and a positional accuracy of  $< 5''$  (Schinnerer et al. in prep). Ground

<sup>1</sup> Spitzer Science Center, 314-6 Caltech, Pasadena, CA, 91125

<sup>2</sup> 105-24 Caltech, Pasadena, CA, 91125

<sup>3</sup> National Radio Astronomy Observatory, P.O. Box O, Socorro, NM, 87801

<sup>4</sup> Harvard-Smithsonian Center for Astrophysics, 60 Garden Street, Cambridge, MA, 02138

<sup>5</sup> AIM Unit Mixte de Recherche CEA CNRS Universit Paris VII UMR n 7158

<sup>6</sup> Max Planck Institut für Astronomie, Königstuhl 17, Heidelberg, D-69117, Germany

<sup>7</sup> Astronomy Department, University of Massachusetts, Amherst, MA, 01003, USA

<sup>8</sup> Institute for Astronomy, University of Hawaii, 2680 Woodlawn Drive, Honolulu, HI, 96822, USA

<sup>9</sup> Department of Astronomy, 260 Whitney Ave, Yale University, New Haven, CT, 06511, USA

<sup>10</sup> Institut d'Astrophysique de Paris, UMR7095 CNRS, Université Pierre et Marie Curie, 98 bis Boulevard Arago, 75014 Paris, France

<sup>11</sup> Department of Physics and Astronomy, University of California, Riverside, CA, 92521, USA

<sup>12</sup> Research Center for Space and Cosmic Evolution, Ehime University, 2-5 Bunkyo-cho, Matsuyama 790-8577, Japan

<sup>13</sup> Large Binocular Telescope Observatory, University of Arizona, 933 N. Cherry Ave., Tucson, AZ, 85721, USA

\* Based on observations taken at the Keck Observatory, the James Clerk Maxwell Telescope, the Institut de Radioastronomie Millimétrique 30m telescope, the Galaxy Evolution Explorer, the Chandra X-ray Observatory, the Hubble Space Telescope, the Very Large Array, the Subaru Telescope, the United Kingdom Infrared Telescope, and the Canada France Hawaii Telescope.

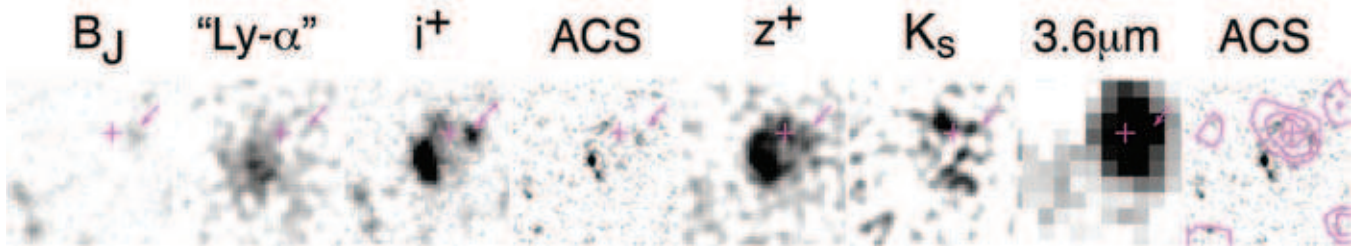


FIG. 1.— Images in  $B_J$ ,  $Ly-\alpha$ ,  $i^+$ , ACS F814W,  $z^+$ ,  $K_s$ , and  $3.6\mu\text{m}$  are shown for  $6'' \times 6''$  (39.4kpc) around the source. The radio position is marked with a cross and a foreground object is marked with an arrow. 1.4GHz Radio contours are overlaid on the ACS band image in the right most panel. The  $Ly-\alpha$  image is generated by subtracting the  $r^+$  continuum image from the IA679 image which is centered on the  $Ly-\alpha$  line. The  $3.6\mu\text{m}$  (rest frame optical) flux is centered on the radio position and diffuse  $i^+$  and  $z^+$  (rest frame UV) flux. A UV bright knot is visible down and to the left ( $0.6''$  to the SE) of the radio position and contains (73%) of the UV flux. The  $Ly-\alpha$  emission is more extended than the UV emission seen in the  $i^+$  band and originates from both the UV bright knot and the radio position but not the foreground objects. Note the UV bright knot is absent in the  $K_s$  band image, indicating a very young age.

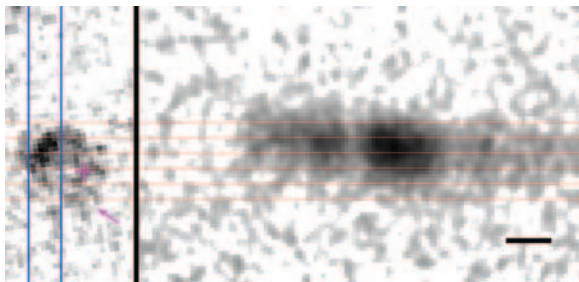


FIG. 2.— The 2-D spectra of the object around the  $Ly-\alpha$  line is shown on the right along with the ground based  $z^+$  band image on the left with the slit position marked in blue, the radio position marked with a magenta cross, and the foreground object indicated by a magenta arrow. The red lines are spaced at  $0.4''$  intervals which is comparable to the spacial resolution of the spectra and the black bar in the bottom right has a length of  $1\text{\AA}$  in the rest frame.  $Ly-\alpha$  emission is coming from all portions of the source and there is a clear velocity gradient along the slit. Note the  $Ly-\alpha$  absorption feature at the physical position of the bright continuum emission and the multiple peaks in the  $Ly-\alpha$  line.

based optical and near infrared imaging in 22 bands, Hubble Space Telescope, Spitzer, and Very Large Array images were obtained as part of the COSMOS survey as described in Capak et al. (2007), Scoville et al. (2007), Sanders et al. (2007), and Schinnerer et al. (2007) respectively. Additional deep J and  $K_s$  data were obtained with the UKIRT, and CFHT telescopes as part of the COSMOS survey (McCracken et al. in prep). X-ray data were obtained with the Chandra X-ray observatory as part of the C-COSMOS program (Elvis et al. in prep). The respective fluxes are tabulated in Table 1.

The optical spectra were taken on the Keck-II telescope using the DEIMOS instrument with a  $1''$  slit width, the 830 line/mm grating ( $3.3\text{\AA}$  FWHM resolution), and the OG550 blocking filter to optimize red throughput. The data were collected in eight 1800s exposures (4h total integration) under photometric conditions with  $0.4-0.6''$  seeing. The object was dithered along the slit by  $\pm 3''$  between exposures to improve background subtraction. The data were reduced with a modified version of the DEEP2 DEIMOS pipeline (Marinoni et al. 2001). In addition to the standard processing this modified pipeline constructs and subtracts a median background and accounts for the shifts when combining the spectra. These additional steps remove the "ghosting" inherent to the 830l/mm grating.

An image of the continuum and  $Ly-\alpha$  emission is shown

TABLE 1  
OBJECT FLUX

Wavelength	Flux ( $\mu\text{Jy}$ ) <sup>+</sup>
0.2-8Kev	$< 3 \times 10^{-16} \text{ ergs s}^{-1} \text{ cm}^{-2}$
150nm (FUV)	$< 0.2$
250nm (NUV)	$< 0.09$
380nm ( $u^*$ )	$< 0.01$
427nm	$< 0.02$
446nm ( $B_J$ )	$< 0.01$
464nm	$0.04 \pm 0.04$
478nm ( $g^+$ )	$0.03 \pm 0.02$
484nm	$0.04 \pm 0.04$
505nm	$0.09 \pm 0.05$
527nm	$0.08 \pm 0.04$
548nm ( $V_J$ )	$0.15 \pm 0.02$
574nm	$0.18 \pm 0.05$
624nm	$0.25 \pm 0.06$
630nm ( $r^+$ )	$0.50 \pm 0.03$
679nm	$1.24 \pm 0.06$
709nm	$1.30 \pm 0.07$
711nm	$1.32 \pm 0.13$
738nm	$1.59 \pm 0.09$
764nm ( $i^+$ )	$1.60 \pm 0.05$
767nm	$1.59 \pm 0.09$
815nm	$1.60 \pm 0.09$
827nm	$1.48 \pm 0.09$
904nm ( $z^+$ )	$1.82 \pm 0.10$
1.25 $\mu\text{m}$ (J)	$2.4 \pm 0.8$
2.15 $\mu\text{m}$ ( $K_s$ )	$3.7 \pm 0.5$
3.6 $\mu\text{m}$	$7.9 \pm 0.2$
4.5 $\mu\text{m}$	$5.8 \pm 0.4$
5.8 $\mu\text{m}$	$3.4 \pm 1.3$
8.0 $\mu\text{m}$	$10 \pm 3.6$
24 $\mu\text{m}$	$26 \pm 13^*$
1.1mm	$4800 \pm 1500$
1.25mm	$3410 \pm 670$
20cm	$45 \pm 9$

<sup>+</sup> All limits are  $1\sigma$  limits. <sup>\*</sup> A nearby bright source was modeled and subtracted to make this measurement, the formal upper limit is  $70\mu\text{Jy}$  if the nearby source is not subtracted.

in Figure 1, and indicates emission from all components of the source. The 2-D and 1-D spectra are shown in Figures 2 and 3 respectively.  $Ly-\alpha$  emission is detected from both the compact and extended portions of the object with a velocity gradient across the slit.  $Ly-\alpha$  emission from the diffuse region is redshifted with respect to the compact source, and a deep  $Ly-\alpha$  absorption feature is present at a redshift corresponding to other absorption features seen in the spectra. The dispersion of distinct peaks in the  $Ly-\alpha$  emission is  $380\text{km s}^{-1}$  and the line asymmetry indicates outflow winds of up to  $\sim 1800\text{km}$

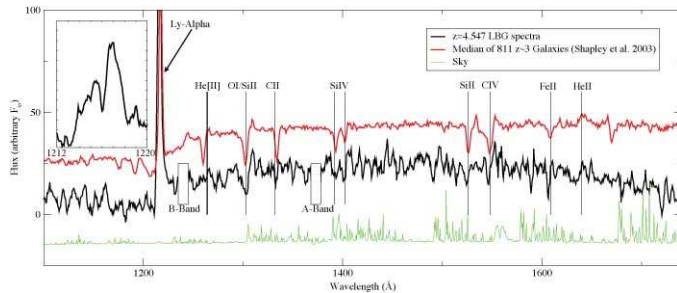


FIG. 3.— The optical spectrum of the source (black) is shown along with the composite LBG spectrum (red) from Shapley et al. (2003). The subtracted sky spectra is shown in green for comparison and the atmospheric A and B absorption bands are marked with boxes. The inset panel on the right shows the region around the Ly- $\alpha$  line. Lines from the interstellar medium and stellar photospheres such as O I, O II, C II, C IV, Si II, Fe II, He II, are clearly visible in the spectra. The presence of the Si IV 1297Å and C IV 1549Å P-cgyni lines, along with the He II 1640Å emission lines indicates the presences of both Wolf-Rayet and O stars, placing the age of the burst at a few Myr (Pettini et al. 2000). Note the absence of a common forbidden He[II] absorption feature at 1264Å which is generated in shocked gas, suggesting a we are not looking through a significant column of gas.

$s^{-1}$ , typical of a merger with heavy star formation. Several interstellar absorption features are clearly seen in the continuum yielding a best fit redshift of  $4.547 \pm 0.002$ , but the dispersion in the Ly- $\alpha$  line suggests some components could be  $\pm 0.02$  from the continuum redshift.

A foreground object with an  $i^+$  band flux of  $0.58 \mu\text{Jy}$  is visible to the west of our source in the B band image (see Figure 1) and its spectrum shows [O II] emission at  $z = 1.41$ . The mass of this system is too low to significantly gravitationally lens our system and it is unlikely that the mm flux originates from this source because the object is outside the radio and Spitzer positional error and has an SED which indicates little obscuration. Furthermore, if the source of the mm emission is at  $z = 1.41$  the  $24 \mu\text{m}$ , mm, and radio flux place the far infrared luminosity at  $\sim 10^{14} L_{\odot}$  and the dust temperature at less than 20K, which is physically unreasonable (Solomon & Vanden Bout 2005; Dale & Helou 2002; Carilli & Yun 1999).

### 3. PAN-CHROMATIC PROPERTIES AND MORPHOLOGY

The rest-frame ultraviolet (UV) properties indicate a merger, typical of star-forming mm sources seen at  $z \sim 2$  (Chapman et al. 2005; Pope et al. 2005; Aretxaga et al. 2007). At least two distinct components are visible in the ACS image, and a region of extended emission is visible in the ground based  $i^+$  and  $z^+$  images which are more sensitive to extended emission than the HST data. The rest frame UV is centered at 10:00:54.516, +2:34:35.17 with the radio and rest frame optical emission centered at 10:00:54.48, +2:34:35.9.

The majority (73%) of the rest frame UV flux originates from a compact ( $< 2.7 \text{kpc}$ ) knot of emission at the south east corner of the object, with the remaining UV emission extended over 17.7 kpc ( $2.7''$ ), while the rest-frame optical (Spitzer-IRAC) flux of the source is centered on the diffuse UV and radio emission. The IA679 filter corresponds to the rest frame Ly- $\alpha$  line and shows strong emission from all components of the source and an extended Ly- $\alpha$  halo around the source (see Figure 1). In addition, a significant excess of flux is measured

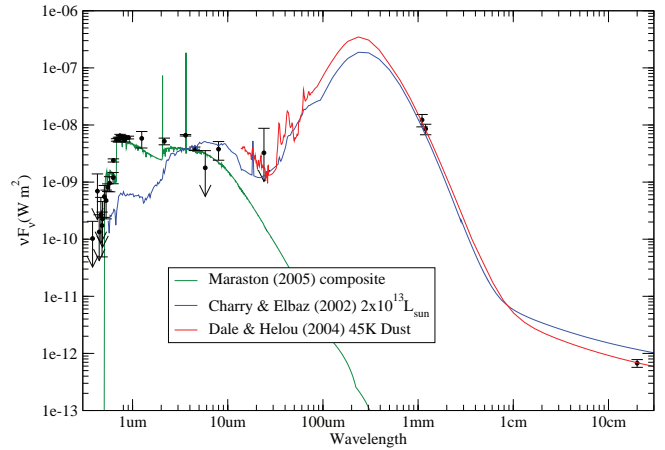


FIG. 4.— The pan-chromatic SED of the source is shown along with the best fit SED model. The UV bright portion of the source is fit by a 2.5 Myr old Maraston (2005) stellar population with  $1.9 \times 10^8 M_{\odot}$  of stellar mass and no extinction, while the UV diffuse portion is fit by a 6.5 Myr old population with  $9.7 \times 10^9 M_{\odot}$  of stellar mass and 1.4 magnitudes of visual extinction. The  $8 \mu\text{m}$ ,  $24 \mu\text{m}$ , mm, and radio portion of the SED is fit by a  $2 \times 10^{13} L_{\odot}$  Chary & Elbaz (2001) model (blue) or a 45K Dale & Helou (2002) model (red).

TABLE 2  
BEST FIT SEDS

Emission Source	Age (Myr)	$A_v$	Mass ( $M_{\odot}$ )	UV SFR ( $M_{\odot}$ )	$\chi^2$	Model
Diffuse	6.5	1.4	$1 \times 10^{10}$	$3200 \pm 550$	24.3	M05
	7.6	1.5	$2 \times 10^{10}$	$4200 \pm 730$	24.7	BC03
Compact	2.5	0.0	$2 \times 10^8$	$250 \pm 20$	54.5	M05
	2.9	0.0	$6 \times 10^8$	$250 \pm 20$	55.7	BC03

in the  $3.6 \mu\text{m}$  band which is centered on the  $H\alpha$  line at  $z = 4.547$ . The Ly- $\alpha$  image, the  $3.6 \mu\text{m}$  excess, and the optical-IR colors of the diffuse region are consistent with all components residing at  $z = 4.547$ .

The possible presence of  $H\alpha$  in the  $3.6 \mu\text{m}$  band and [O II] in the  $K_s$  band combined with the low S/N of the J band and multiple components with different SEDs make it difficult to constrain the age and mass of this object with stellar models because the 4000Å break strength is degenerate with the line ratio in some cases. To reduce these degeneracies  $H\alpha$  and [O II] line flux is added to the stellar models in proportion to the unobscured UV star formation rate (Kennicutt 1998). The diffuse portion of the source fades rapidly between the  $K_s$  and  $z^+$  bands, indicating significant obscuration. The UV compact region is not detected redwards of the  $z^+$  band, indicating a very young ( $< 5$  Myr old) stellar population and little dust obscuration.

A two component fit to the total integrated light produced poor results. The UV and optical light are spatially separated, but the best fit model places the majority of both the UV and optical light in a single unobscured  $> 0.1 \text{Gyr}$  old population. To overcome this degeneracy we attempt to deconvolve the UV bright knot and the diffuse component of the source. Flux measurements were made in all of the ground based images for the UV diffuse portion of the source using a  $1''$  diameter aperture on the original stacked images without PSF matching (Capak et al. 2007). An aperture correction of

1.4 magnitudes, based on the ACS morphology, was then applied. A Maraston (2005) (M05) or Bruzual & Charlot (2003) (BC03) single burst model with solar metallicity, a Salpeter IMF and a Calzetti et al. (2000) extinction law were then fit to these and the IRAC measurements. The model fluxes were then subtracted from the total flux, and a second model was fit to the remaining flux. The resulting fits are tabulated in Table 2 and shown in Figure 4.

The present data do not constrain the peak or shape of the FIR emission, so the total luminosity is uncertain, but the mm and  $24\mu\text{m}$  data imply an infrared luminosity of  $0.5 - 2 \times 10^{13} L_{\odot}$ , and a corresponding star formation rate (SFR) of  $1000 - 4000 M_{\odot} \text{yr}^{-1}$  (Dale & Helou 2002; Chary & Elbaz 2001; Carilli & Yun 1999). The radio flux gives a second estimate of the SFR independent of dust obscuration at  $3700 \pm 700 M_{\odot} \text{yr}^{-1}$  assuming a radio spectral slope of  $-0.8$  (Kennicutt 1998). Finally, assuming the excess flux in the  $3.6\mu\text{m}$  band is due to  $\text{H}\alpha$  originating from the diffuse component, we derive a dust corrected star formation rate of  $2900 \pm 100 M_{\odot} \text{yr}^{-1}$  (Calzetti et al. 2000; Kennicutt 1998), in good agreement with the UV, but lower than the mm, and radio determined values. This last measurement is largely independent of the models because the  $\text{H}\alpha$  flux was fixed to the model star formation rate rather than fit as an extra parameter.

The bolometric luminosity of this source appears to be dominated by star formation. The UV and radio morphology suggest a star formation rate density of  $15 - 50 M_{\odot} \text{yr}^{-1} \text{kpc}^{-2}$ , within the range of locally observed starbursts (Solomon & Vanden Bout 2005; Sanders & Mirabel 1996). However, without a high resolution map of the mm emission and gas it is not possible to form a clear picture of how the star formation is distributed. No X-ray flux is detected in a 200ks Chandra exposure placing the X-ray to FIR luminosity ratio in the star formation dominated regime (Alexander et al. 2005, 2003), and the radio to FIR flux ratio falls on the local starburst relation (Yun et al. 2001). However, the limit on the X-ray to radio luminosity ratio does not rule out an AGN. The SFR inferred by the diffuse UV and optical emission can explain the FIR emission if the two are spatially related. Finally, the  $\text{Ly-}\alpha$  line is narrow and

AGN emission lines such as broad C IV or N V are not observed in the optical spectra, so any AGN must either be heavily obscured and/or outside the spectrograph slit.

#### 4. IMPLICATIONS FOR GALAXY FORMATION

This object is a likely progenitor for the massive ( $> 10^{11} M_{\odot}$ ) old ( $> 2\text{Gyr}$ ) early type systems seen in large numbers at  $z \sim 2$  (McGrath et al. 2007; Kong et al. 2006; Daddi et al. 2005; Cimatti et al. 2004). The morphology and spectral properties of the passive galaxies indicate they formed in a single burst at  $z > 4$  (Cimatti et al. 2008; Stockton et al. 2008; Daddi et al. 2005). However, the density of passive  $z \sim 2$  systems is  $\sim 10^{-4} Mpc^{-3}$  (Kong et al. 2006; Daddi et al. 2005), which is too high to be explained by the previous mm source redshift distribution (Cimatti et al. 2008).

The discovery of this object and other recent studies suggest the fraction of  $z > 4$  mm sources may be higher than previously thought. An  $850\mu\text{m}$  flux limited sample is equivalent to a star formation rate limited sample at  $0.5 < z < 7.5$  and the  $z \sim 2$  objects must have formed by  $z \sim 4$  in order to have sufficient time to evolve into passive systems. With this redshift range and a star formation duration (duty cycle) of 50Myr, a surface density of  $\sim 200$  objects per square degree is required for these sources to be progenitors of the  $z \sim 2$  passive galaxy population. Objects brighter than 4mJy at  $850\mu\text{m}$  would have a sufficiently high SFR to form  $> 10^{11} M_{\odot}$  passive systems within 50Myr and the density of such sources is sufficient to form the  $z \sim 2$  passive galaxies if  $\sim 30\%$  of them are at  $z > 4$  (Borys et al. 2003). This fraction is well within the range recent studies place at  $z > 4$  (Younger et al. 2007; Wang et al. 2006; Chapman et al. 2005).

Support for this work was provided by the Spitzer Science Center which is operated by the Jet Propulsion Laboratory (JPL), California Institute of Technology under NASA contract 1407, NASA through contract 1278386 issued by the JPL and NASA grant HST-GO-09822. CC thanks the Max-Planck-Gesellschaft and the Humboldt-Stiftung for support through the Max-Planck-Forschungspreis.

#### REFERENCES

- Alexander et al., 2003, AJ, 125, 383  
 Alexander et al., 2005, ApJ, 632, 736  
 Aretxaga et al., 2007, MNRAS, 379, 1571  
 Blain et al. 2002, Phys. Rep., 369, 111  
 Borys et al., 2003, MNRAS, 344, 385  
 Bruzual, G., & Charlot, S. 2003, MNRAS, 344, 1000  
 Calzetti et al., 2000, ApJ, 533, 682  
 Capak et al. 2007, ApJS, 172, 99  
 Carilli et al., 2008, ApJ  
 Carilli, C. L., & Yun, M. S. 1999, ApJ, 513, L13  
 Chapman et al., 2005, ApJ, 622, 772  
 Chary, R., & Elbaz, D. 2001, ApJ, 556, 562  
 Cimatti et al., 2008, ArXiv e-prints, 801  
 Cimatti et al., 2004, Nature, 430, 184  
 Daddi et al., 2005, ApJ, 626, 680  
 Dale, D. A., & Helou, G. 2002, ApJ, 576, 159  
 Hughes et al., 1998, Nature, 394, 241  
 Kennicutt, Jr., R. C. 1998, ARA&A, 36, 189  
 Kong et al., 2006, ApJ, 638, 72  
 Lee et al., 2008, ApJ  
 Maraston, C. 2005, MNRAS, 362, 799  
 Marinoni et al., 2001, ArXiv Astrophysics e-prints  
 McGrath, E. J., Stockton, A., & Canalizo, G. 2007, ApJ, 669, 241  
 Pettini et al., 2000, ApJ, 528, 96  
 Pope et al., 2005, MNRAS, 358, 149  
 Salpeter, E. E. 1955, ApJ, 121, 161  
 Sanders, D. B., & Mirabel, I. F. 1996, ARA&A, 34, 749  
 Sanders et al., 2007, ApJS, 172, 86  
 Schinnerer et al. 2007, ApJS, 172, 46  
 Scott et al., 2008, MNRAS, 385, 2225  
 Scoville et al., 2007, ApJS, 172, 38  
 Shapley et al., 2003, ApJ, 588, 65  
 Solomon, P. M., & Vanden Bout, P. A. 2005, ARA&A, 43, 677  
 Stockton et al., 2008, ApJ, 672, 146  
 Wang, W.-H., Cowie, L. L., & Barger, A. J. 2006, ApJ, 647, 74  
 Wang et al., 2007, ApJ, 670, L89  
 Wilson et al., 2008, MNRAS, 386, 807  
 Younger et al., 2007, ApJ, 671, 1531  
 Yun, M. S., Reddy, N. A., & Condon, J. J. 2001, ApJ, 554, 803