

4-27-2021

2021 Pesticide Safety April 27: Station Construction Update

Hilary A. Sandler

University of Massachusetts - Amherst, hsandler@umass.edu

Follow this and additional works at: https://scholarworks.umass.edu/cranberry_extension



Part of the [Agriculture Commons](#)

Recommended Citation

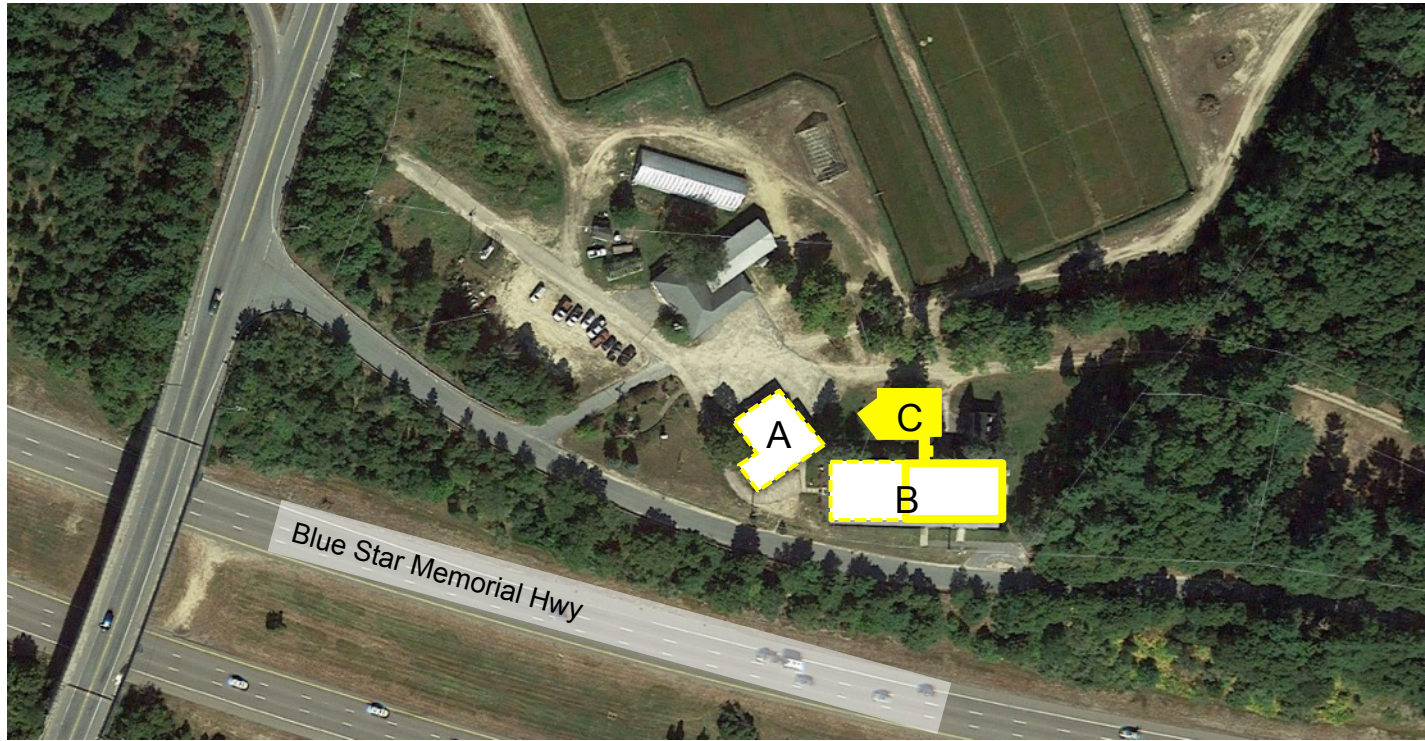
Sandler, Hilary A., "2021 Pesticide Safety April 27: Station Construction Update" (2021). *Cranberry Station Extension meetings*. 343.

Retrieved from https://scholarworks.umass.edu/cranberry_extension/343

This Article is brought to you for free and open access by the Cranberry Station Outreach and Public Service Activities at ScholarWorks@UMass Amherst. It has been accepted for inclusion in Cranberry Station Extension meetings by an authorized administrator of ScholarWorks@UMass Amherst. For more information, please contact scholarworks@library.umass.edu.

- Presentations posted to UMass ScholarWorks website
 - Outreach and Public Services/Extension Meetings
 - https://scholarworks.umass.edu/cranberry_extension/
- Virtual Lunchtime Bogsides: Wed May 12 and June 9
- IPM Message up and running since April 9
 - On QuickLinks on right side of website homepage
 - Call 508-295-2212, x60
- Covid Update

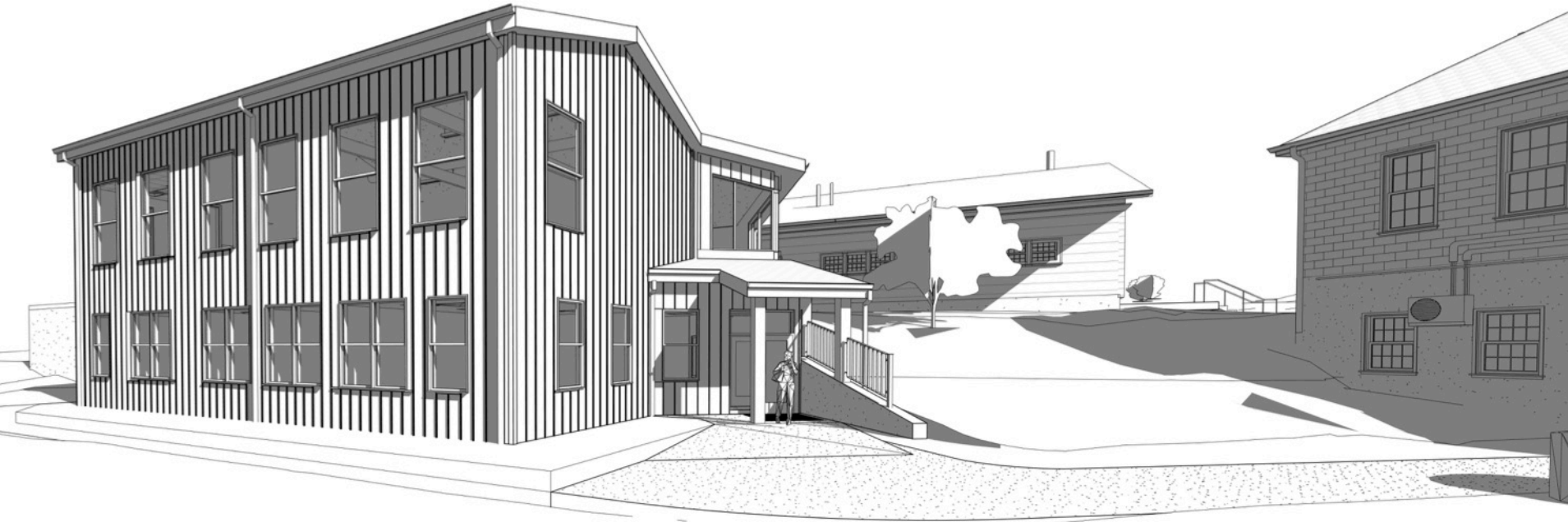
Project Site
1 State Bog Road, East Wareham MA



- A. Existing Administration Building
- B. Existing Biology Lab
- C. Proposed REL Center

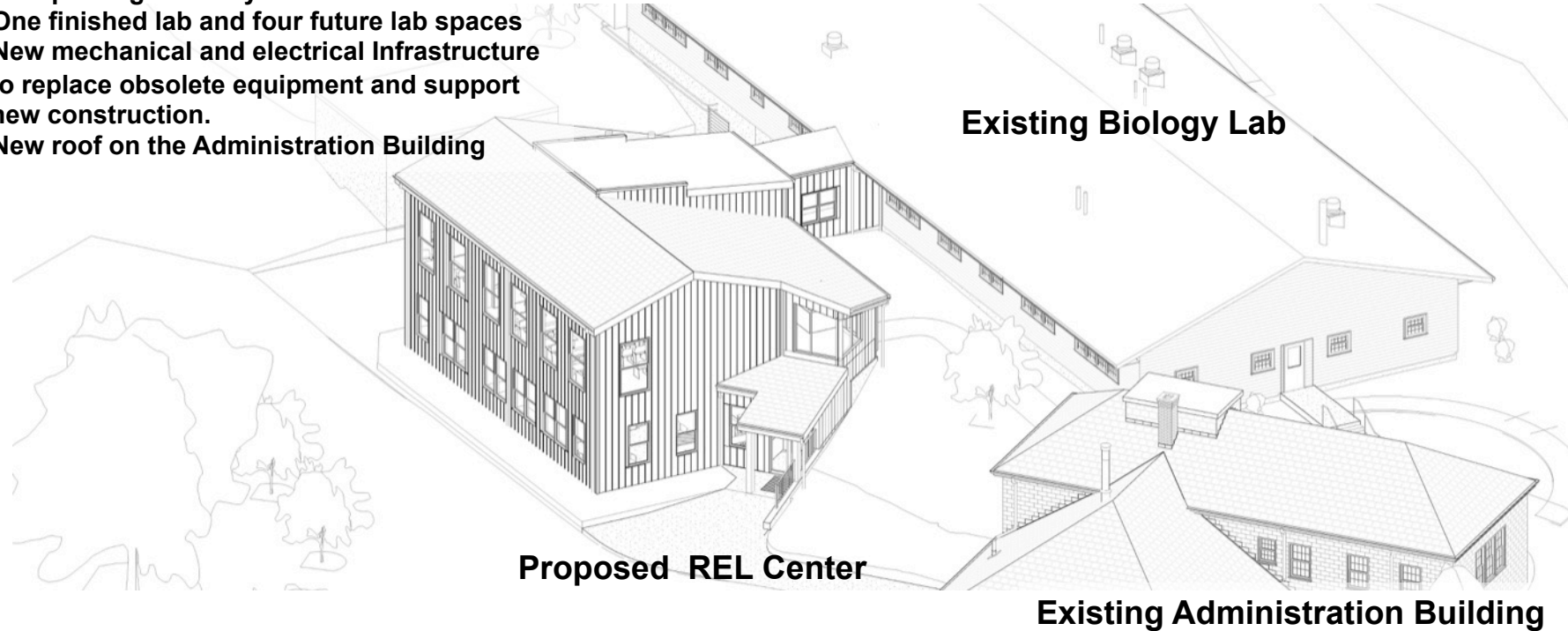
CRANBERRY RESEARCH, EXTENSION AND LEARNING (REL) CENTER

UMassAmherst



Project Details

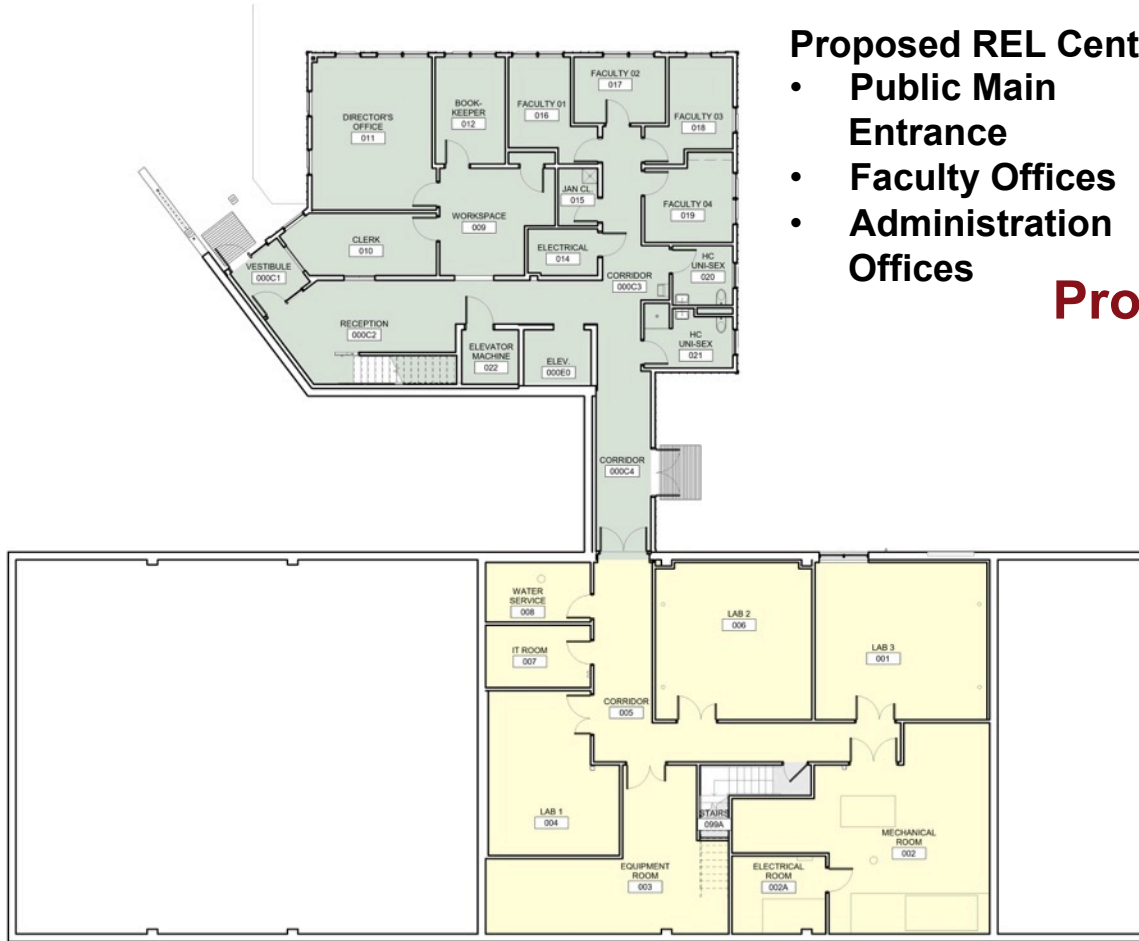
- New two-story construction for Conference Center, faculty and administrative offices.
- New parking and fully accessible entrance
- One finished lab and four future lab spaces
- New mechanical and electrical infrastructure to replace obsolete equipment and support new construction.
- New roof on the Administration Building



CRANBERRY RESEARCH, EXTENSION AND LEARNING CENTER

Proposed REL Center:

- **Public Main Entrance**
- **Faculty Offices**
- **Administration Offices**

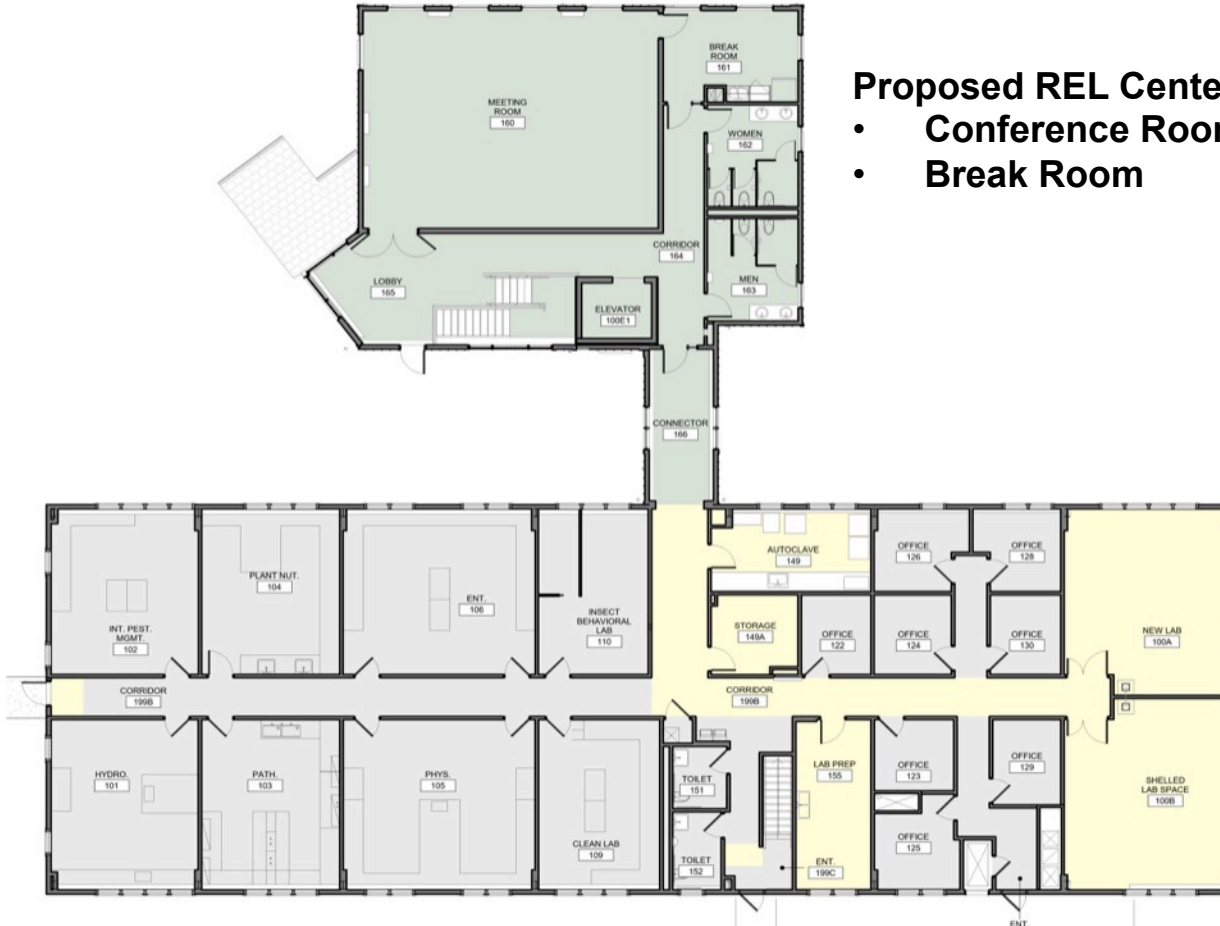
Project Details – Lower Level**Existing Biology Lab:**

- **Infrastructure for 3 Future Labs**
- **Research Equipment Room**
- **Mechanical and Electrical Equipment Rooms**

Project Details – Upper Level

Proposed REL Center

- Conference Room
- Break Room



Existing Biology Lab:

- New Finished Lab
- New Future Lab Space
- Reconfigured Lab Support and Shared Equipment Rooms

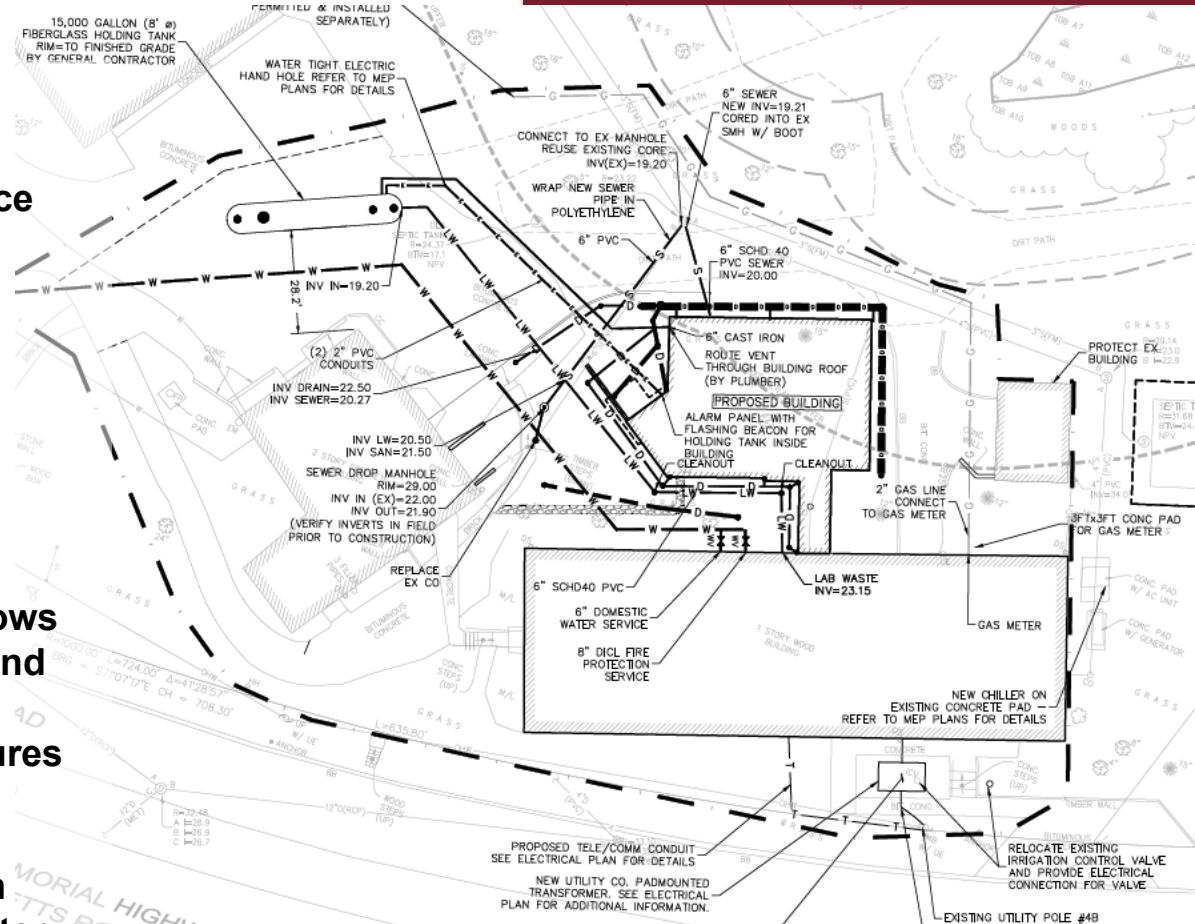
Existing Lab and REL Center

Infrastructure and Utility Upgrades:

- **Replace obsolete HVAC systems**
- **New electrical transformer and service**
- **New gas service**
- **New water service, fire suppression system**
- **Separate lab and general use water supply and waste systems**
- **Storage tank for lab waste**

Sustainability Features:

- **Double-glazed energy efficient windows**
- **High-efficiency condensing boilers and water heaters**
- **Water saving low-flow plumbing fixtures**
- **Energy recovery ventilation system**
- **LED lighting fixtures**
- **Rain collection from roof to retention pond for slow release into groundwater**



Budget and Schedule

Estimated Cost \$7.75 Million

State Funding: \$5.75 Million

Campus Funding: \$2.0 Million

Anticipated Construction Start – July 1, 2021

Anticipated Completion – June 30, 2022



CRANBERRY RESEARCH, EXTENSION AND LEARNING CENTER

New UMCS/ARS Grants and Scientific Growth to Serve the Cranberry Industry

- NE-SARE Late Water Project (3 yr): 1 Post-Doc, grad student
- DOE Dual-Use Solar Project (3 yr): 1 Post-Doc, grad student
- USDA-ARS Frost-Irrigation-Soil Moisture Project (3 yr): 1 Post-Doc
- USDA-ARS (2 yr): Nitrogen Cycling in Soils; Phosphorus release from Soil into Floodwaters: 1 Post-Doc each project
- USDA Hatch Project (5 years): Variety Trial on State Bog

Hatch Project 2021-2026

**Evaluate 13 New
Hybrid Varieties for
Performance under
MA Conditions**





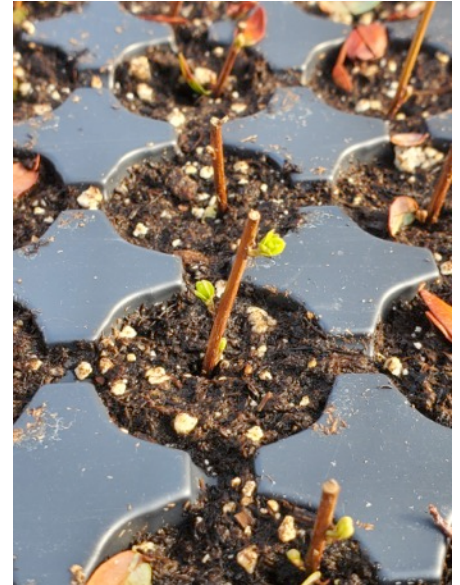
Varieties

- HyRed
- Ruby Star
- Sundance
- Badger
- Crimson King
- Granite Red
- Midnight 8
- Pilgrim King
- Haines
- Mullica Queen
- Scarlet Knight
- Vassana
- Welker



Schedule

- Propagating in greenhouse now
- Plant late May-Early June
- Colonizing, vine health, fruit quality for next 5 years
- Grant ends in 2026, but we will keep examining!



Thank Yous

Generous donations by:

- Oiva Hannula & Sons - trucking
- A.D. Makepeace – sand
- Sure-Cran Services – planting
- **Van Johnson** for bulldozing, leveling and coordinating everything!!

