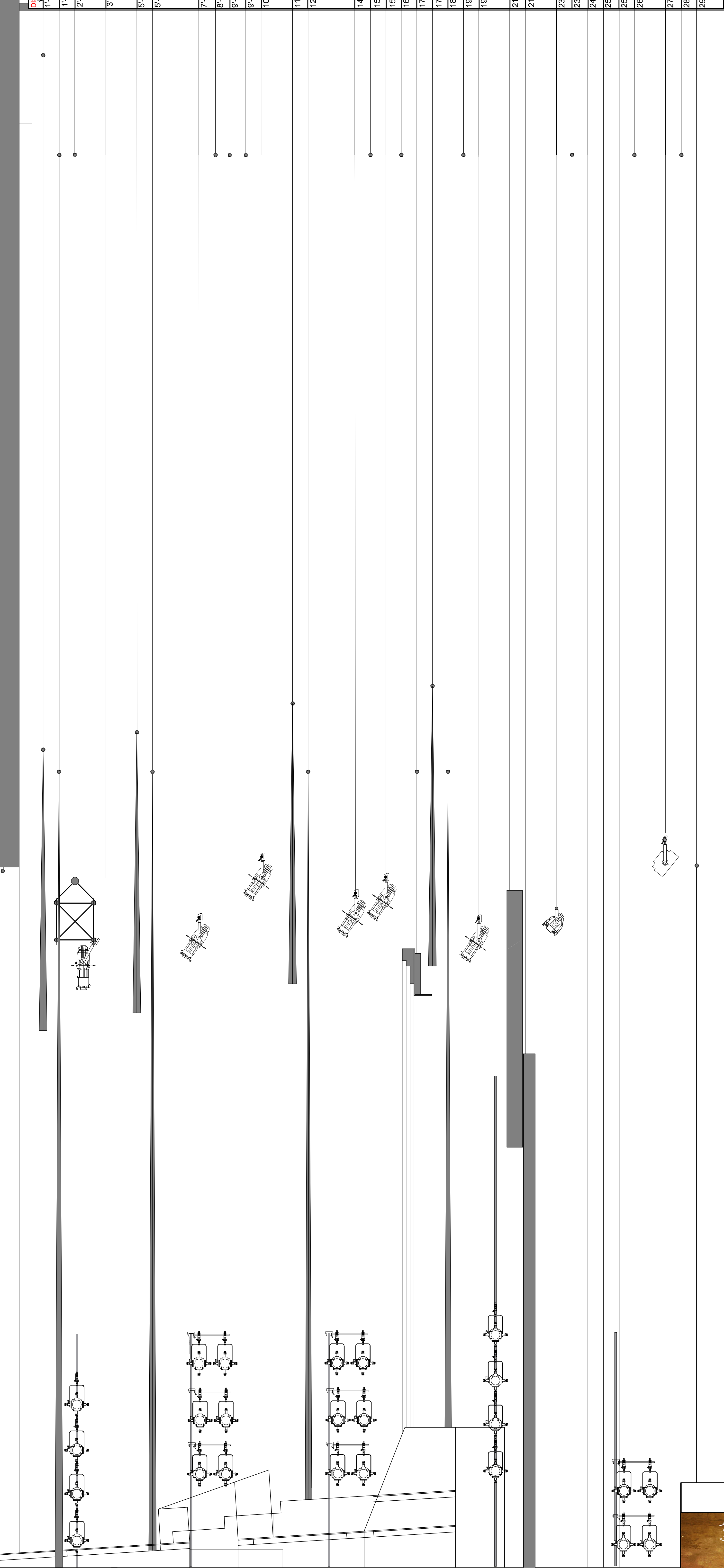
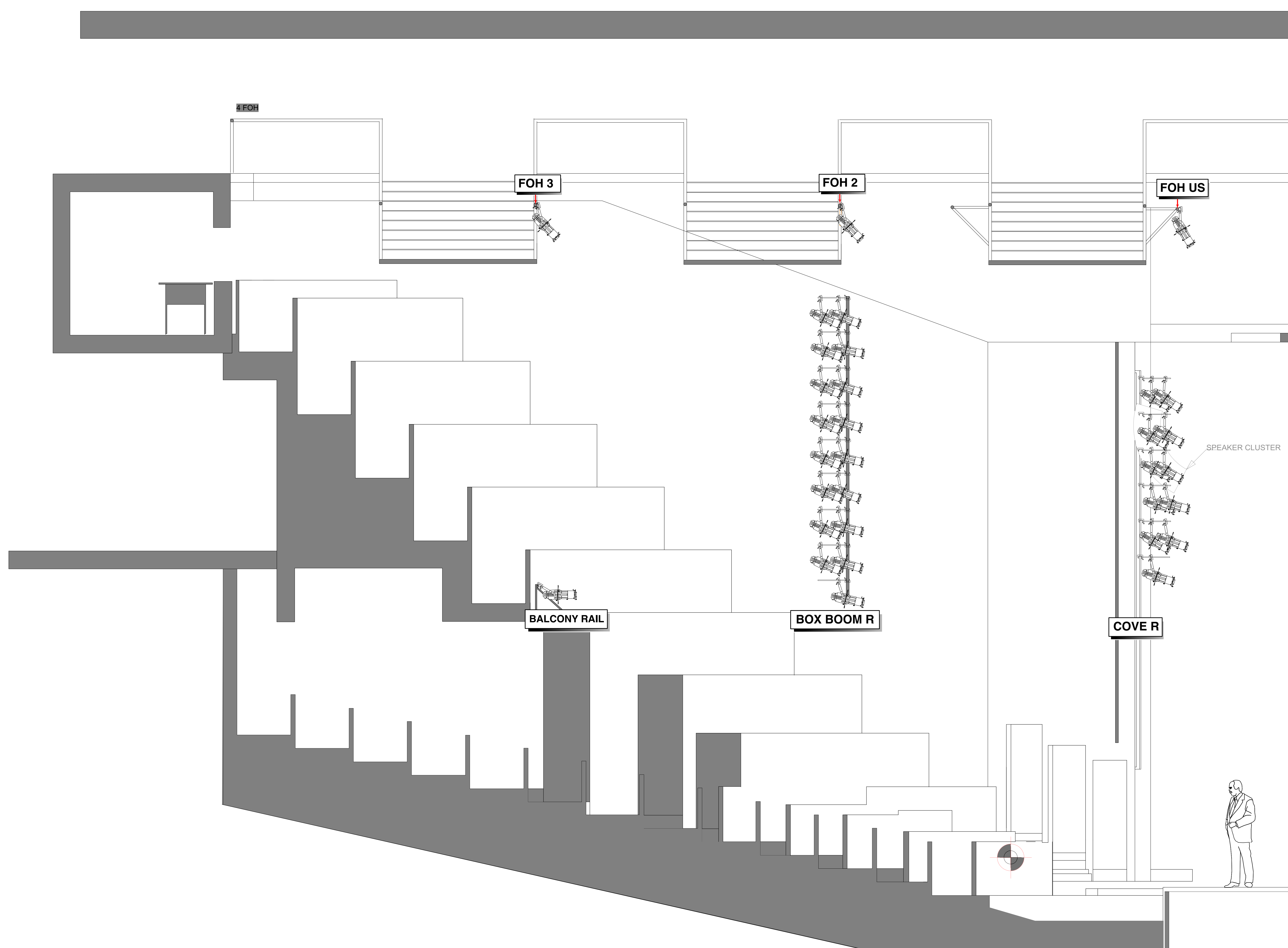


| | |
|----|----------------------------------|
| 1 | 14" WIDE PINK PASTER LINE |
| 2 | 12" MAIN CURTAIN |
| 3 | 18" LEGS |
| 4 | 24" OPEN |
| 5 | 3" X 3" PROSS/ELEC 1' TRIM 27'3" |
| 6 | 9" X 9" BORDER TRIM 23'9" |
| 7 | 9" X 9" LEGS |
| 8 | 7" X 9" ELEC TRIM 27'10" |
| 9 | 9" X 9" OPEN |
| 10 | 9" X 9" OPEN |
| 11 | 10" X 13" ELEC TRIM 31'1" |
| 12 | 11" X 9" BORDER TRIM 29'0" |
| 13 | 12" X 14" LEGS |
| 14 | 14" X 14" ELEC TRIM 29'4" |
| 15 | 15" X 9" OPEN |
| 16 | 15" X 9" ELEC TRIM 30'4" |
| 17 | 16" X 4" OPEN |
| 18 | 17'0" ONSTAGE PORTAL |
| 19 | 17'8" BORDER TRIM 29'9" |
| 20 | 18" X 4" LEGS |
| 21 | 19'0" 6A ELEC TRIM 28'2" |
| 22 | 19'8" 8B ELEC TRIM 28'2" |
| 23 | 21'0" SCENIC FLATS TRIM 18' |
| 24 | 21'8" SCENIC FLATS |
| 25 | 23'0" 7 ELEC TRIM 28'2" |
| 26 | 23'8" OPEN |
| 27 | 24'4" OPEN |
| 28 | 25'0" BLACK SCRM |
| 29 | 25'8" OPEN |
| 30 | 26'4" OPEN |
| 31 | 27'8" 8 ELEC TRIM 31'9" |
| 32 | 28'4" OPEN |
| 33 | 29'0" CYC |



SECTION



MERCHANT OF VENICE
 DIRECTOR: Tony Simotes
 SCENIC DESIGNER: Miguel Romero
 LIGHTING DESIGNER: Michael Blagys

DATE: 11/07/2014