

2006

A Magellanic origin for the warp of the Galaxy

MD Weinberg
weinberg@astro.umass.edu

L Blitz

Follow this and additional works at: https://scholarworks.umass.edu/astro_faculty_pubs



Part of the [Astrophysics and Astronomy Commons](#)

Recommended Citation

Weinberg, MD and Blitz, L, "A Magellanic origin for the warp of the Galaxy" (2006). *ASTROPHYSICAL JOURNAL*. 43.
10.1086/503607

This Article is brought to you for free and open access by the Astronomy at ScholarWorks@UMass Amherst. It has been accepted for inclusion in Astronomy Department Faculty Publication Series by an authorized administrator of ScholarWorks@UMass Amherst. For more information, please contact scholarworks@library.umass.edu.

A MAGELLANIC ORIGIN FOR THE WARP OF THE GALAXY

MARTIN D. WEINBERG

Astronomy Department, University of Massachusetts Amherst, MA 01003

AND

LEO BLITZ

Astronomy Department, University of California, Berkeley, CA 94720

Submitted to ApJ Letters

ABSTRACT

We show that a Magellanic Cloud origin for the warp of the Milky Way can explain most quantitative features of the outer HI layer recently identified by Levine, Blitz & Heiles (2005). We construct a model similar to that of Weinberg (1998) that produces distortions in the dark matter halo, and we calculate the combined effect of these dark-halo distortions and the direct tidal forcing by the Magellanic Clouds on the disk warp in the linear regime. The interaction of the dark matter halo with the disk and resonances between the orbit of the Clouds and the disk account for the large amplitudes observed for the vertical $m = 0, 1, 2$ harmonics. The observations lead to six constraints on warp forcing mechanisms and our model reasonably approximates all six. The disk is shown to be very dynamic, constantly changing its shape as the Clouds proceed along their orbit. We discuss the challenges to MOND placed by the observations.

Subject headings: Galaxy: structure, Galaxy: Disk, Galaxy: kinematics and dynamics

1. INTRODUCTION

The warp of the outer Milky Way, known since 1957 (Kerr, Hindman & Carpenter 1957), has been quantitatively determined for the first time by Levine et al. (2005). It can be described as a superposition of three and only three of the lowest order vertical harmonics of a disk: a *dish-shaped* $m = 0$, a *integral-sign-shaped* $m = 1$, and a *saddle-shaped harmonic* $m = 2$. The lines of nodes for each are close to coincident and nearly radial. The amplitudes of each reaches 7–10% of the radius of the disk. A number of possible warp producing mechanisms have been suggested including long-lived eigenmodes, forcing by halo triaxiality, persistent cold-gas accretion, and tidal excitation. We show here that the origin of this warp can be well-described as the tidal interaction of the Magellanic Clouds with the disk and dark matter halo of the Milky Way. The interaction of the dark matter halo with the disk and resonances between the orbit of the Clouds and the disk account for the large amplitudes of the three harmonics and their approximate shape and orientation.

2. OBSERVATIONS

Levine et al. (2005) found that a dynamical model for the warp must satisfy six observational constraints: 1) the three lowest-order harmonics: $m = 0, 1$ and 2 are necessary and sufficient to describe the global shape of the warp; higher-order global harmonics are typically an order of magnitude or more weaker; 2) the $m = 1$ warp has the largest amplitude everywhere in the outer disk; 3) the $m = 0$ and $m = 2$ warps are comparable in amplitude to the $m = 1$ warp, but are smaller at all radii; 4) the $m = 1$ warp has a measurable amplitude at the galactocentric radius of the Sun, R_{\odot} , but the $m = 0$ and $m = 2$ warps begin near the edge of the stellar disk, at $R = 2R_{\odot}$; 5) all three harmonics grow approximately linearly with radius,

reaching amplitudes of 1–2 kpc at about $R = 30$ kpc; and 6) the amplitudes of each of the harmonics reach 5–10% of the radius of the disk. The lines of maximum descent of the $m = 1$ and $m = 2$ warps are coincident within about 12 degrees in galactocentric azimuth ϕ and show little evidence of precession. The lines are located near $\phi = 90^{\circ}$.

3. METHODOLOGY

We use the procedure described by Weinberg (1998, W98) to couple the halo response to the tidal excitation theory presented by Hunter & Toomre (1969, HT). This assumes that the disk remains thin and that gas dissipation is unimportant for the dynamics. HT derived an expression for the bending of a thin disk by the Magellanic Clouds and concluded that the direct excitation of the disk by the Clouds produces a warp of only a few hundred parsecs, an order of magnitude less than the amplitude of the observed warp. W98 wedded the halo excitation presented in Weinberg (1989) to the HT approach, allowing the disk to feel both the tidal field from the Clouds directly as well as the force from the dark-matter halo wake excited by the Clouds. The assumption of linearity limits the predictions to modest amplitudes.

We use perturbation theory rather than N-body simulation because of the intrinsic difficulty and subtlety in obtaining accurate multiple time scale results from a simulation. The excitation hierarchy of satellite orbit \rightarrow halo wake \rightarrow disk bending modes results in multiple interleaved time scales: the orbital periods of the Clouds, the pattern speeds of the halo wakes, and the pattern speeds of the bending modes. We also have multiple spatial scales. For example, a simulated N-body disk must be capable of supporting the bending modes. In addition, particle simulations can degrade the resonant dynamics as described by Weinberg & Katz (2005). With such difficulties, one should verify the dynamics of each component of the mechanism before putting everything together in

an N-body simulation, although this is rarely done.

4. MODEL

The perturbation theory includes the force from an extended satellite. However, the halo and disk excitation depend only on the lowest-order harmonics while the spatial extent changes the higher-order harmonics, and thus the extent plays little role. Therefore, as long as the Clouds remain bound, their masses may be added for our estimates. We use the disk profile from W98. Our halo is an NFW profile with $c = 15$ (Navarro et al. 1997) and virial mass 20 times the disk mass. The orbital plane was computed as described as in W98. We used the radial velocity and proper motion from Kallivayalil et al. (2005) and the distance modulus from Freedman et al. (2001) to derive a space velocity and computed the resulting orbit in the spherical dark matter halo. We adopted the LMC mass from Westerlund (1997) of $2 \times 10^{10} M_{\odot}$, although there is considerable variance in the literature. The current position of the LMC is shown as is the current state of the warp. This orbit will carry it toward the NGP.

Although our calculation assumes a collisionless and vertically thin medium, it is more generally applicable for the following reasons. Firstly, although the dispersion relations for a multicomponent and collisionless media differ at small scales (e.g. Jog 1996; Rafikov 2001), the large-scale warp will be governed by inertia and the gravitational restoring force, not by local pressure. In addition, the disk self gravity is dominated by the inner stellar disk; the outer gas layer plays only a minor role in establishing the modes. Therefore, our collisionless results are likely to be similar to a multicomponent calculation. Secondly, the vertical restoring force depends very weakly on the thickening as long as the vertical degree of freedom does not couple to the bending (this may be demonstrated by straightforward but tedious algebra). Therefore, the modes will be largely unchanged by thickening over short time scales. However, the challenging problem of vertical coupling is important and remains to be investigated thoroughly.

The warp is a very dynamic structure based on the temporal evolution of the model. This can be seen in the AVI file of the simulations which can be found at <http://www.astro.umass.edu/~weinberg/lmc>. Also included at this site are comparisons of the $m = 0, 1, 2$ evolution. Rather than a static structure that might be expected for a warp in response to a triaxial halo, a warp that results from the Magellanic Clouds is continuously changing shape because of the varying amplitudes and phases of the various modes. The image looks rather like a flag flapping in the breeze as the Clouds completes an orbit of the Milky Way.

5. COMPARISON WITH OBSERVATIONS

Figure 1 shows the shape of the warp for both the model and the data. We plot only $m = 0, 1, 2$ from the data, ignoring the weak but significant $m = 10, 15$ terms. The overall agreement is quite good, although there are some differences. The model does not, for example, have a minimum that is as extensive in Galactic azimuth as the data. Lines of maximum descent for $m = 1, 2$ in both the simulations and the HI data analysis are also shown in the figure. They are separated by about 20° in the model, a bit more than, but close to the 12° in Levine et al.

(2005). Both sets of lines are oriented in the same sense: close to $\phi = 90^{\circ}$. Neither set of lines shows evidence of significant variation with galactocentric radius.

Figure 2 shows the amplitudes of the first three harmonics, $m = 0, 1, 2$, in both the model and the data. We increased the Clouds' mass by 33% for a better fit. As in the data, the $m = 1$ in the simulations is the strongest, and increases nearly linearly out to the edge of the disk. At large R, where the inertia is small, the linear theory is expected to overpredict the warp (Tsuchiya 2002). The simulations also show a weak response of $m = 0, 2$ out to about 15 kpc, and then increasing nearly linearly, but with approximately the same amplitude for both, providing a reasonable representation of the data.

The amplitude ordering of these vertical harmonics has a natural physical explanation. The force from the halo wake and the satellite may be described by three-dimensional harmonics and these affect the warp height as follows. A spherically symmetric $m = 0$ halo distortion does nothing to the warp. An $m = 1$ halo distortion will tend to accelerate the disk in the vertical direction; the differential acceleration of the disk results in a vertical $m = 0$ “dishing”. An $m = 2$ halo distortion will attract the disk upward and downward in a reflection-symmetric way causing the classic integral-sign warp. Higher-order symmetries may be deduced by similar geometric considerations. The power in the halo excitation drops off as an inverse power of the harmonic order and only the lowest order terms have features well inside the satellite orbit. Conversely, the existence of these higher-order harmonics with a power-law drop off is a natural consequence of this tidal theory and is consistent with the data.

We fixed the disk and the halo mass inside of the virial radius while adjusting the satellite orbit and halo concentration and found the following trends. First, the halo wake and its pattern speed are determined by the halo concentration. The disk bending modes have a natural set of frequencies for a given halo. These will be maximally excited when forced by the halo wake at or near harmonics of this natural frequency. The ratio of $m = 2$ amplitude to the $m = 1$ amplitude is maximized for a halo concentration $c \approx 10$. For an NFW profile, this puts $r_s \approx 30$ kpc. This is very close to the Λ CDM estimates for the Milky Way concentration. Secondly, the orientation of the response depends on whether the nearest resonance is larger or smaller than natural frequency. Therefore changing the satellite orbit, which changes the forcing frequency, affects both the amplitude of the amplitude and orientation of the warp response. In short, the warp depends on a “clockwork” of frequency relationships which depends on the satellite orbit, the dark-matter halo and the disk. A pericenter larger than the current 49 kpc estimate shifts the position angle (PA) so that the warp peaks closer to PA=180 degrees. Similarly, smaller pericenter increases the amplitude also shifts the PA. We conclude that our model “prefers” our current fiducial MC model. We are not claiming that our fiducial model is the most probable amongst the distributions of allowed values but that a plausible choice of parameters corresponds to many features of the observed data.

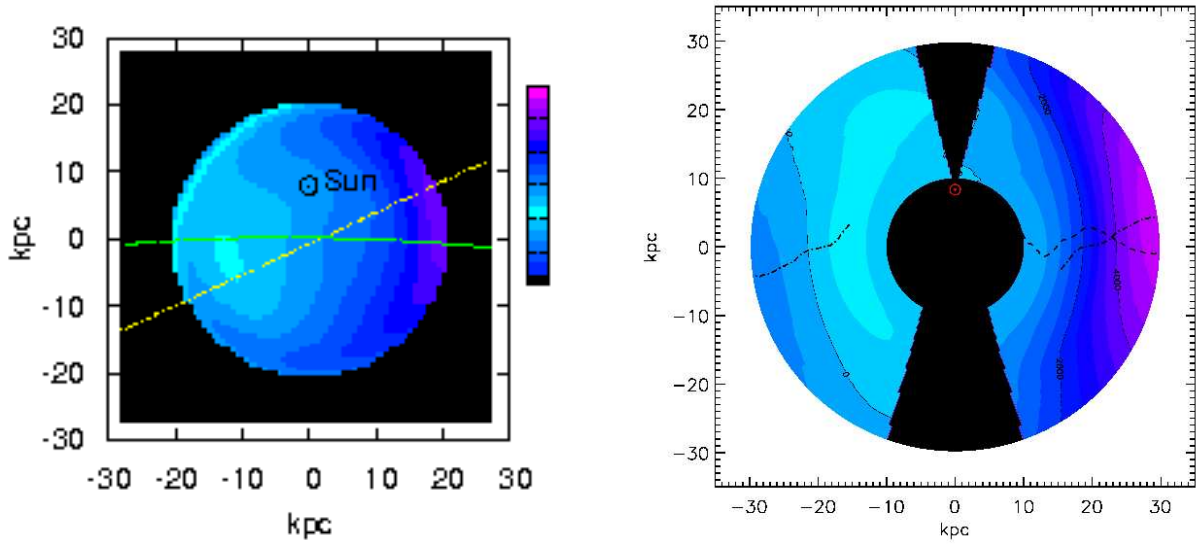


FIG. 1.— Lines of maximum descent (perpendicular to the line of nodes) for $m = 1, 2$ from the model (dashed and dash-dot, resp.). The lines are superimposed on a contour plot of the deviation in z of the midplane of the disk from $b = 0^\circ$. Compare with Fig. 11 in Levine et al. (2005).

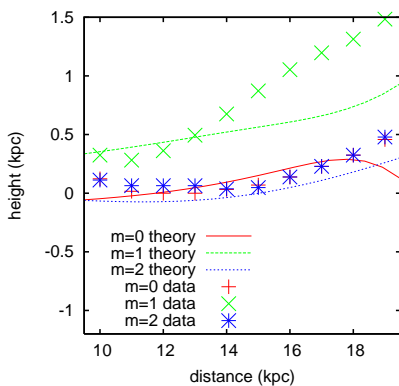


FIG. 2.— The amplitudes of the $m = 0, 1, 2$ harmonics as a function of Galactic radius from the simulations (curves) and from the HI Milky Way data (points Levine et al. 2005).

6. DISCUSSION

6.1. Comparison with N -body Simulations

The predictions of W98 were checked by several groups using N -body simulations. García-Ruiz et al. (2002) used a hybrid N -body particle–ring code and did not find the warp predicted in W98. They offer the failure of the linear theory as the culprit but did not investigate a variety of models. Similarly, Mastropietro et al. (2005) performed a simulation including both the gaseous, stellar and dark components of the Large Cloud and the Milky Way and remark that the effect on the Milky Way is negligible. Conversely, Tsuchiya (2002), using a hybrid code that includes both a potential expansion and a tree code, obtained amplitudes of $m = 0, 1, 2$ warps in the larger halo model that show very good agreement with the observed amplitudes in the Milky Way. He also shows that the amplitude of the warp depends strongly on the dark halo mass model.

It is difficult to reconcile these contradictory findings but three possibilities obviously occur: 1) the linear the-

ory does not apply; 2) the simulations do not apply due to numerical difficulties; and 3) the two simulations with null warps have chosen unlucky sets of parameters. Both García-Ruiz et al. (2002) and Tsuchiya (2002) choose methods that explicitly treat the multiple scales. García-Ruiz et al. (2002) used tilted rings to represent the disk and a tree code to represent the halo. Although the use of rings limits the investigation to the $m = 1$ response, it should be sufficiently sensitive to the halo excitation without strong particle number issues. Tsuchiya (2002) used an expansion algorithm to represent the halo gravitational field and a tree code to represent the disk to better represent the multiple scales (see Tsuchiya 2002, for additional discussion of the dynamic range problems that motivate this choice). We feel that the discrepancy between the results of these two groups is most like Item (3): the García-Ruiz et al. model is not particularly warp producing. The good qualitative correspondence between W98 and Tsuchiya (2002) suggests that the linear theory captures the underlying physics although is likely to differ in detail. For example, the linear theory over-predicts the height in the edge of the disk (Fig. 2), and this motivates our truncation of the predictions in the outer disk. Mastropietro et al. (2005) primarily emphasize the affect of the Milky Way tides on the Large Cloud and do not tailor their approach to treat the multiple scale problem per se. We suggest that their report of no disk warp results from Items (2) and (3).

6.2. Other Explanations

Most warp theories depend on the bending response of the disk and this response is strongly affected by the existence of a self-gravitating dark matter halo. The theories may be roughly grouped as follows: 1) bending modes may be primordially excited and persistent (e.g. Sparke & Casertano 1988); 2) the response of the disk to the non-axisymmetric shape of the halo; 3) tidal excitation (as we have discussed here) and 4) the warp may be produced by the response of the disk to cosmic infall (e.g.

Jiang & Binney 1999). The topic was nicely reviewed by Binney (1991). Subsequently, Nelson & Tremaine (1995) argued against long-lived modes. The triaxiality of the Milky Way halo remains uncertain. Helmi (2004) reports a prolate halo ($q=1.25$) while Johnston et al. (2005) finds an oblate halo ($q=0.8-0.9$) using Sgr dwarf constraints. Such modest triaxiality seems unlikely to produce the observed vertical $m = 2$ feature. In addition, cosmic infall more naturally produces tilted rings, an $m = 1$ feature; the observed vertical $m = 2$ may require a conspiracy of several inflow directions.

6.3. Relevance for Modified Gravity

Although the success of our model favors the existence of a dark-matter halo in Nature, many find it seductive to modify gravity to produce the observed rotation velocities in the Galaxy without dark matter (modified Newtonian dynamics or MOND Milgrom 1983a,b; Bekenstein & Milgrom 1984). Might the tidal theory also apply in MOND? It is beyond the scope of this letter to repeat our calculations using MOND, it seems plausible that direct forcing of the Galactic disk by the Clouds in MOND may provide warp amplitudes in excess of the original predictions without a dark halo (HT). Similarly, we would expect the disk modes and frequencies to be qualitatively similar, the excess restoring force of the halo being produced by the MOND force. However, MOND would have to (1) admit bending modes with similar morphology to those in the Newtonian theory and (2) these modes would have to conspire to frequencies that couple them to the direct forcing by the Clouds in such a way that they assumed the same orientation as in the “clockwork” described in §5. Because this clockwork and the $m = 2$ to $m = 1$ amplitude ratio depends on the simultaneous halo and disk excitation, agreement with the observations described in §2 seems rather unlikely and thereby disfavors MOND. We encourage detailed predictions.

6.4. Relevance for other Galactic Systems

A large fraction of other warped galaxies also show warps in their HI layers and a significant fraction of these are asymmetric. Warps in these systems are generally analyzed with a program such as ROTCUR (Begeman 1989) or one of its derivatives, but invariably are forced to fit the $m = 1$ warp only. This paper, and the work of Levine et al. (2005) show that at least three harmonics

ought to be fit to the warps of external galaxies, especially those with asymmetric warps, which can be caused by a superposition of these harmonics. The degree to which various harmonics are present in a warp can produce important constraints on whether the warp is due to a satellite, a triaxial halo, cold gas inflow, or some primordial excitation. All warps may not be alike.

6.5. Summary

We have demonstrated a plausible mechanism for the excitation of the warp that explains all of its general features. A number of warp producing mechanisms have been explored elsewhere in addition to tides. It is possible that different mechanisms may act in different galaxies and possibly in concert in a single galaxy. Nonetheless, our simple model nicely reproduces the observed features in the Milky Way HI gas layer. The existence of massive companions, the Magellanic Clouds, and the prediction from linear perturbation theory and at least one corroborating N-body simulation suggests that a tidal explanation is viable. Our model depends on the gravitational response of the halo and thereby suggests that the dark matter is not an artifact of modifying the laws of gravity. Conversely, given a dark halo, we argue that the tide from the Magellanic Clouds must be affecting the Milky Way disk, and, given the quality of the agreement, it seems to be the dominant mechanism. This model then promises an additional constraint on the distribution of dark matter. Although we have emphasized the gas layer response beyond the stellar disk, the effect of other satellite encounters such as the recent accretion of Sagittarius dwarf may be detectable in future high-resolution surveys and may help determine the properties of the inner halo. Warp observations are important because promise to reveal aspects of the dark matter distribution that are otherwise observationally inaccessible. Further analysis of warps may provide more precise constraints on the profile of dark matter in the Milky Way and nearby external galaxies.

L.B. would like to acknowledge partial support from NSF grant 02-28963. M.D.W. has been partially supported by NASA NAG5-12038 and NSF 02-05969. We thank Arend Sluis and the anonymous referee for comments on the manuscript.

REFERENCES

- Begeman, K. G. 1989, *A&A*, 223, 47
 Bekenstein, J., & Milgrom, M. 1984, *ApJ*, 286, 7
 Binney, J. 1991, *Dynamics of Disc Galaxies*, 297
 Binney, J., & Tremaine, S. 1987, Princeton, NJ, Princeton University Press, 1987
 Freedman, W. L., et al. 2001, *ApJ*, 553, 47
 García-Ruiz, I., Kuijken, K., & Dubinski, J. 2002, *MNRAS*, 337, 459
 Helmi, A. 2004, *MNRAS*, 351, 643
 Hunter, C., & Toomre, A. 1969, *ApJ*, 155, 747 (HT)
 Jiang, I.-G., & Binney, J. 1999, *MNRAS*, 303, L7
 Jog, C. J. 1996, *MNRAS*, 278, 209
 Johnston, K. V., Law, D. R., & Majewski, S. R. 2005, *ApJ*, 619, 800
 Kallivayalil, N., van der Marel, R. P., Alcock, C., Axelrod, T., Cook, K. H., Drake, A. J., & Geha, M. 2005, *astro-ph/0508457*
 Kerr, F. J., Hindman, J. V., & Carpenter, M. S. 1957, *Nature*, 180, 677
 Levine, E.S., Blitz, L., & Heiles, C. *ApJ*, submitted
 Mastropietro, C., Moore, B., Mayer, L., Wadsley, J., & Stadel, J. 2005, *MNRAS*, 363, 521
 Milgrom, M. 1983, *ApJ*, 270, 365
 Milgrom, M. 1983, *ApJ*, 270, 371
 Navarro, J. F., Frenk, C. S., & White, S. D. M. 1997, *ApJ*, 490, 493
 Nelson, R. W., & Tremaine, S. 1995, *MNRAS*, 275, 897
 Rafikov, R. R. 2001, *MNRAS*, 323, 445
 Sparke, L. S., & Casertano, S. 1988, *MNRAS*, 234, 873
 Tsuchiya, T. 2002, *New Astronomy*, 7, 293
 Weinberg, M. D. 1989, *MNRAS*, 239, 549
 Weinberg, M. D. 1998, *MNRAS*, 299, 499 (W98)
 Weinberg, M. D., & Katz, N. 2005, *astro-ph/0508166*
 Westerlund, B., Cambridge, Cambridge University Press, 1997