

Jun 23rd, 4:15 PM - 4:30 PM

## Session D6: The Fish Migration Strategy on the Border Rivers Morava and Dyje – International Cooperation

David Veselý

*Povodí Moravy, s.p.*, vesley@pmo.ca

Follow this and additional works at: [https://scholarworks.umass.edu/fishpassage\\_conference](https://scholarworks.umass.edu/fishpassage_conference)



Part of the [Aquaculture and Fisheries Commons](#), and the [Hydraulic Engineering Commons](#)

---

Veselý, David, "Session D6: The Fish Migration Strategy on the Border Rivers Morava and Dyje – International Cooperation" (2015).  
*International Conference on Engineering and Ecohydrology for Fish Passage*. 30.  
[https://scholarworks.umass.edu/fishpassage\\_conference/2015/June23/30](https://scholarworks.umass.edu/fishpassage_conference/2015/June23/30)

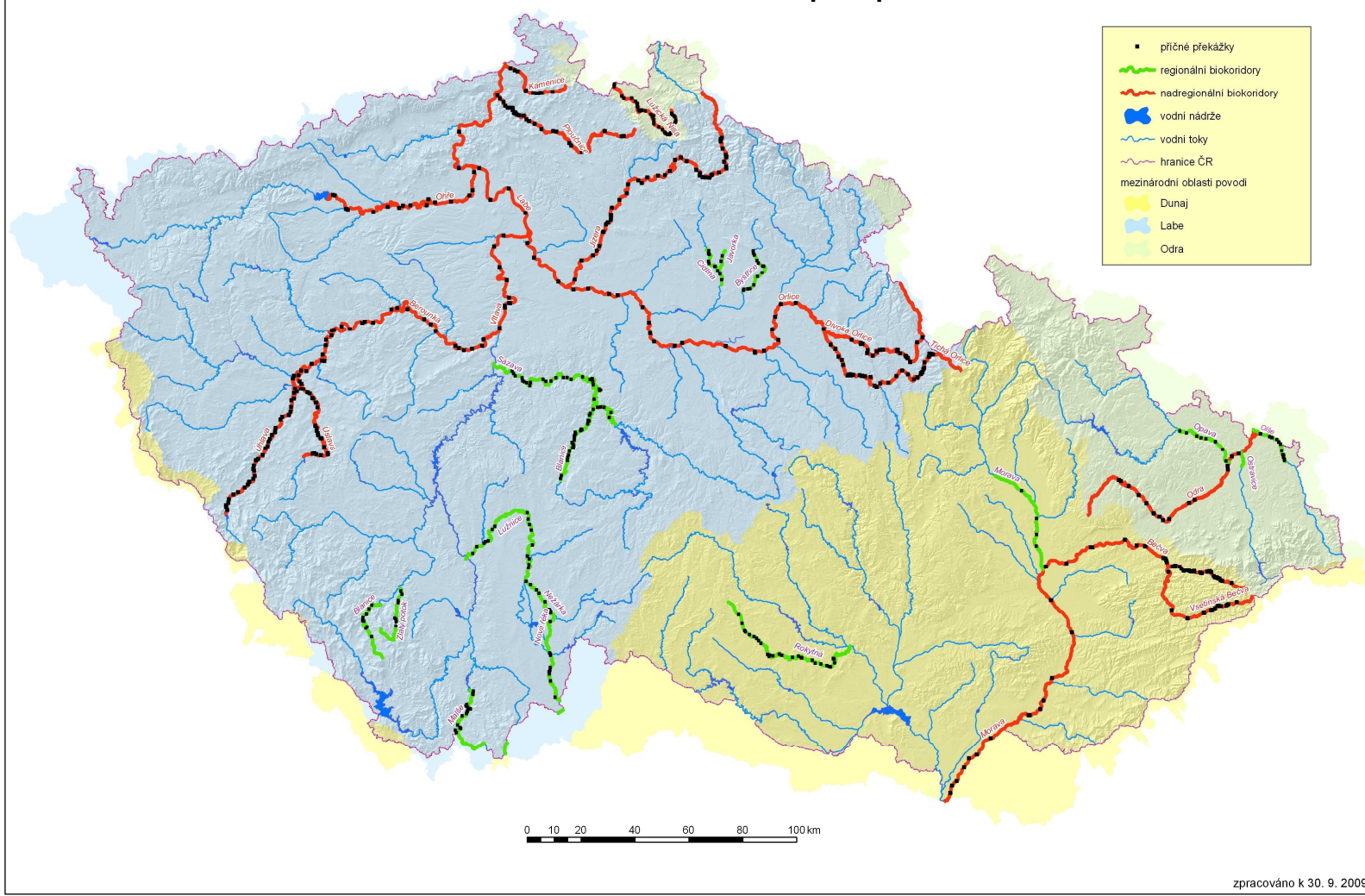
This Event is brought to you for free and open access by the Fish Passage Community at UMass Amherst at ScholarWorks@UMass Amherst. It has been accepted for inclusion in International Conference on Engineering and Ecohydrology for Fish Passage by an authorized administrator of ScholarWorks@UMass Amherst. For more information, please contact [scholarworks@library.umass.edu](mailto:scholarworks@library.umass.edu).

# The fish migration strategy on the border rivers Morava and Dyje – international cooperation

Ing. David Veselý  
Povodí Moravy, s.p.

[vesely@pmo.cz](mailto:vesely@pmo.cz)

## Koncepce zprůchodnění říční sítě ČR





ÚPRAVA BEČUV.

ROŽNOVSKÁ BEČVA.  
I. STAV. TRAT'.

5.

## RYBOVOD

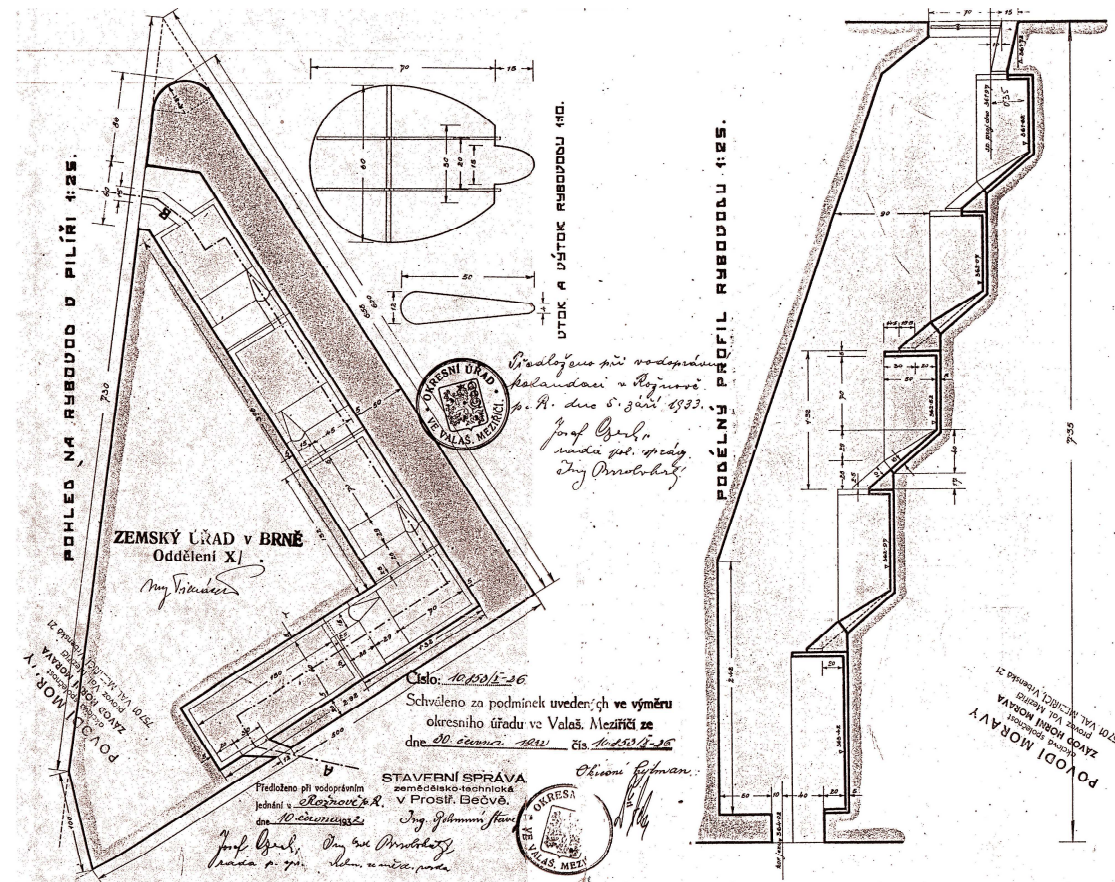
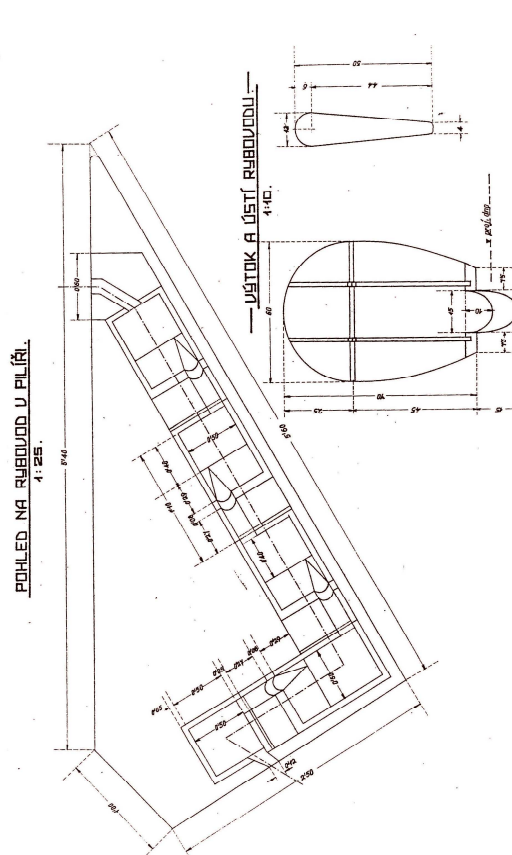
ŽELEZOBETONOVÉHO JEZU MIKULENKOVA

V KM: 2+200 ROŽNOVSKÉ BEČVY.

TECHN. ODDĚL. ZEM. ÚŘADU.

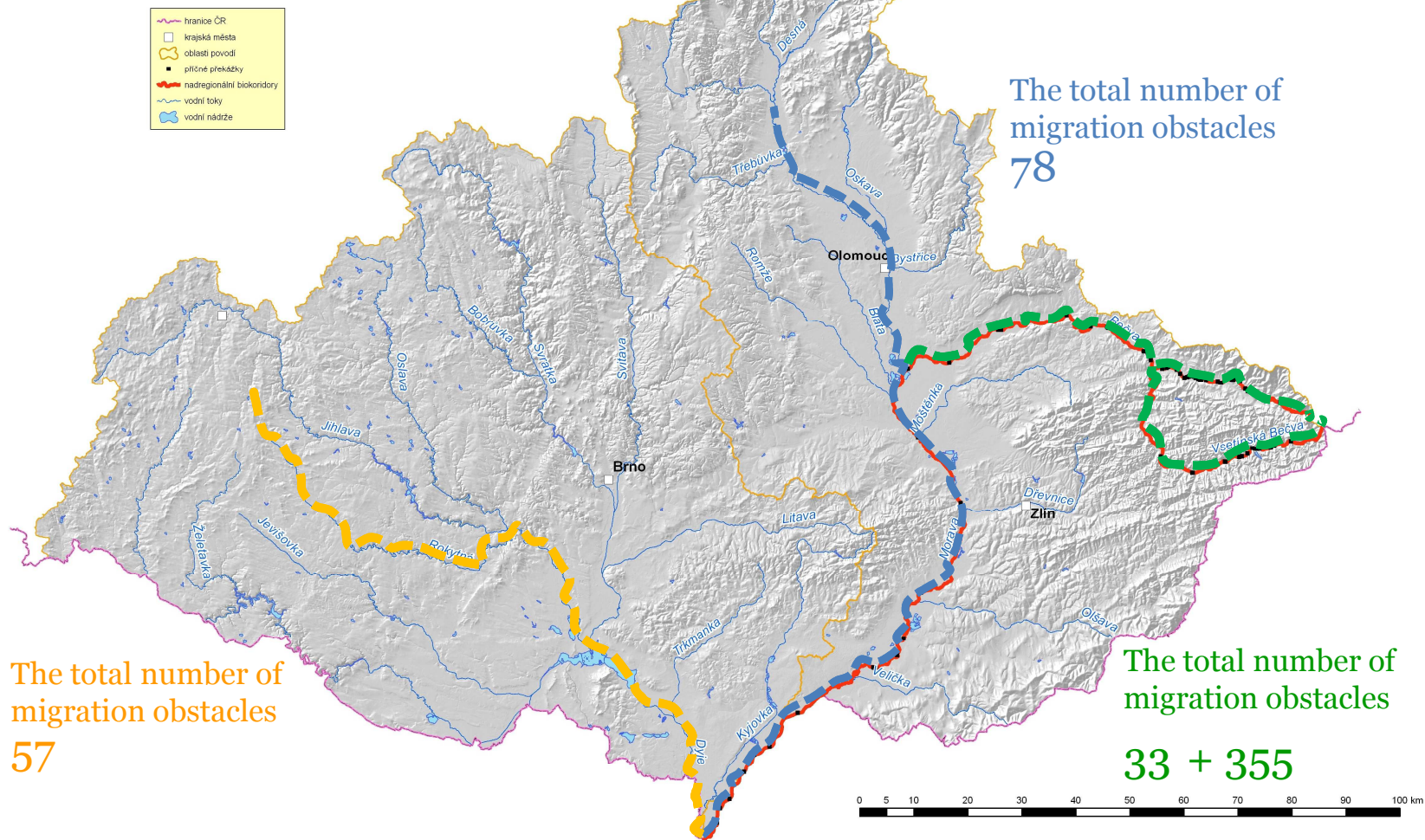
V BRNĚ V ÚNORU 1929.

*Ing. Githmanni Stavař*

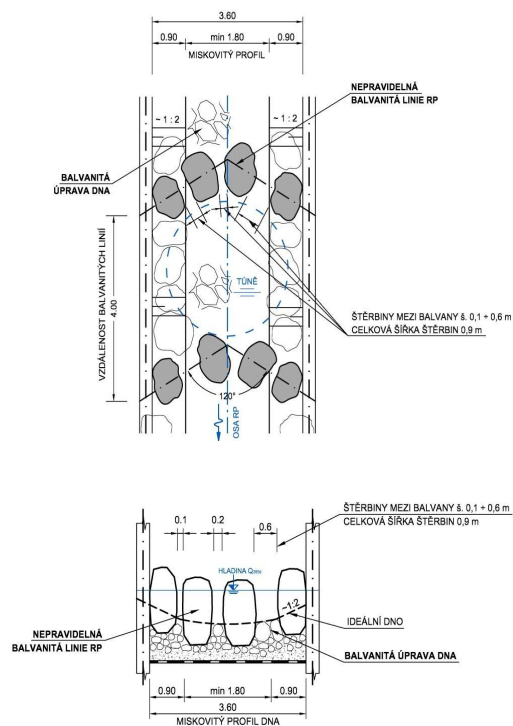
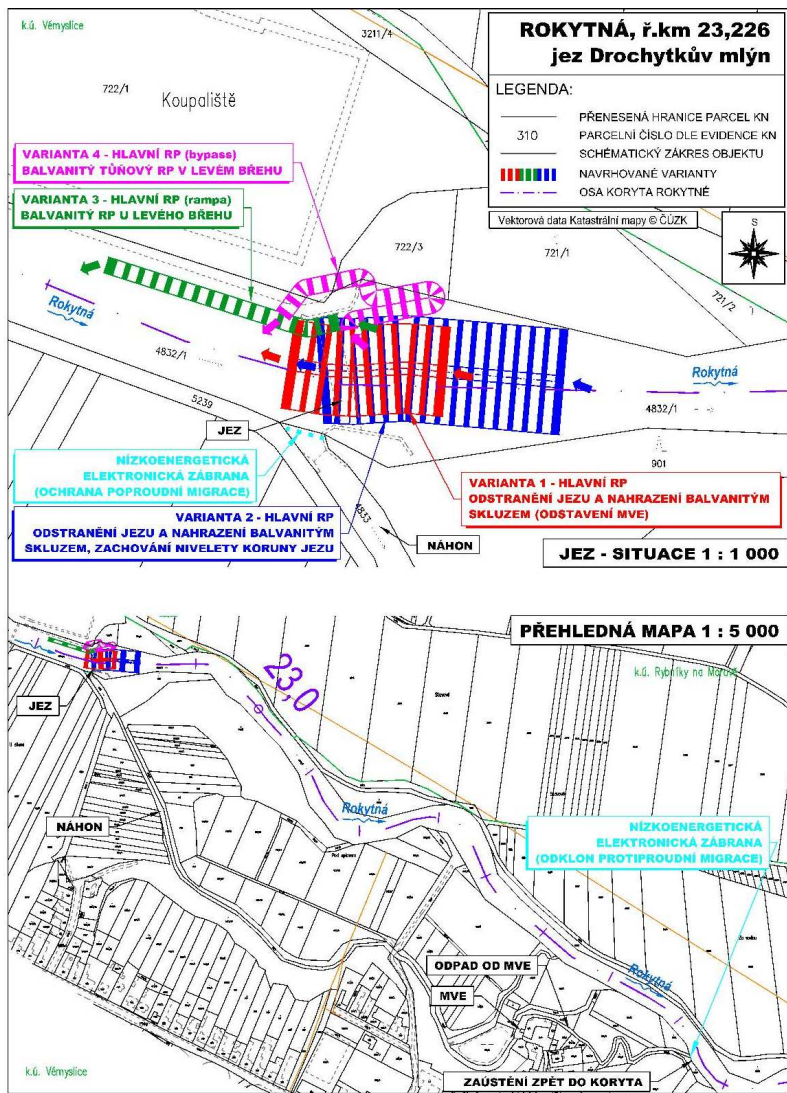




## Nadregionální prioritní biokoridory v povodí Dunaje

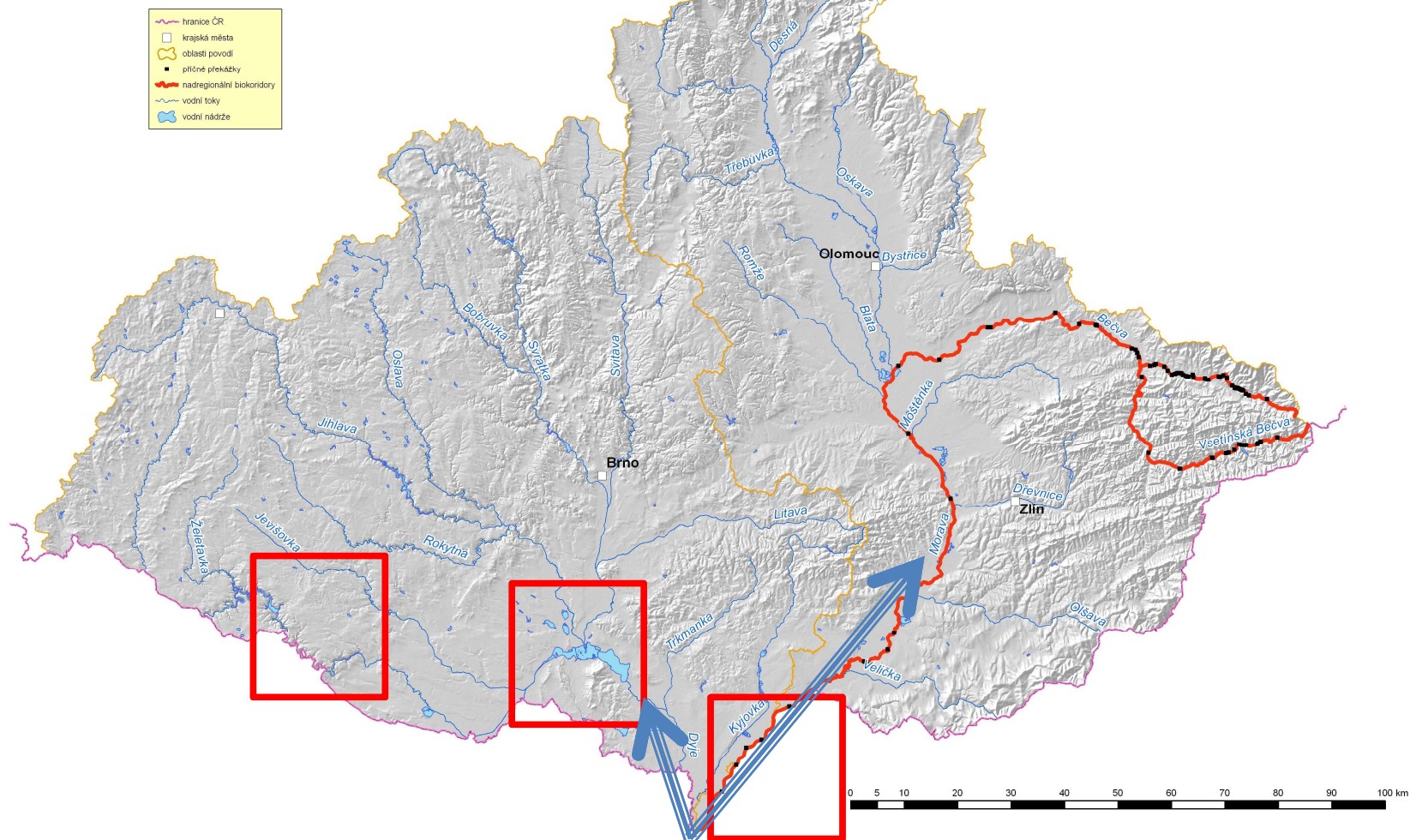


zpracováno k 30. 9. 2009



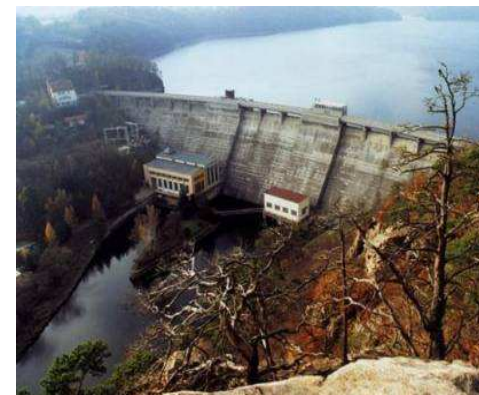
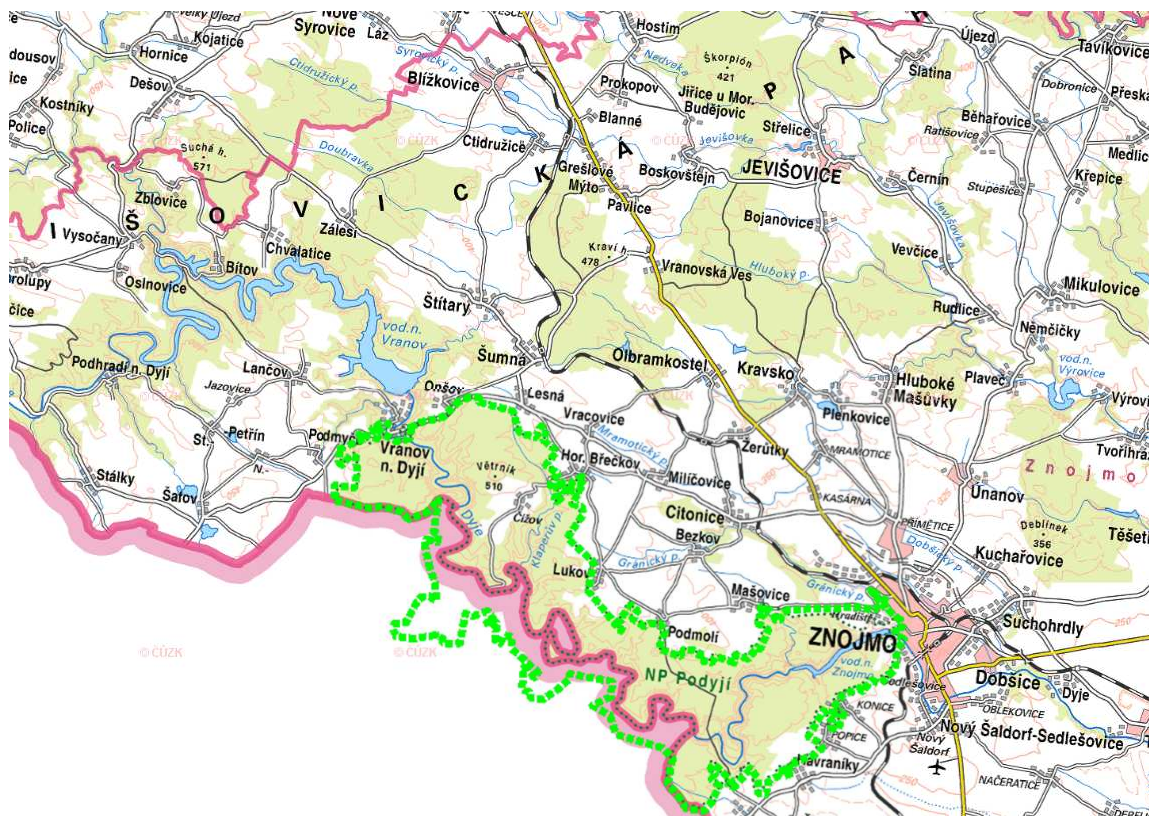
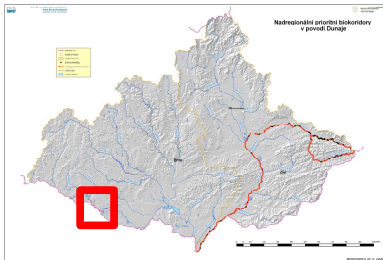


## Nadregionální prioritní biokoridory v povodí Dunaje



zpracováno k 30. 9. 2009





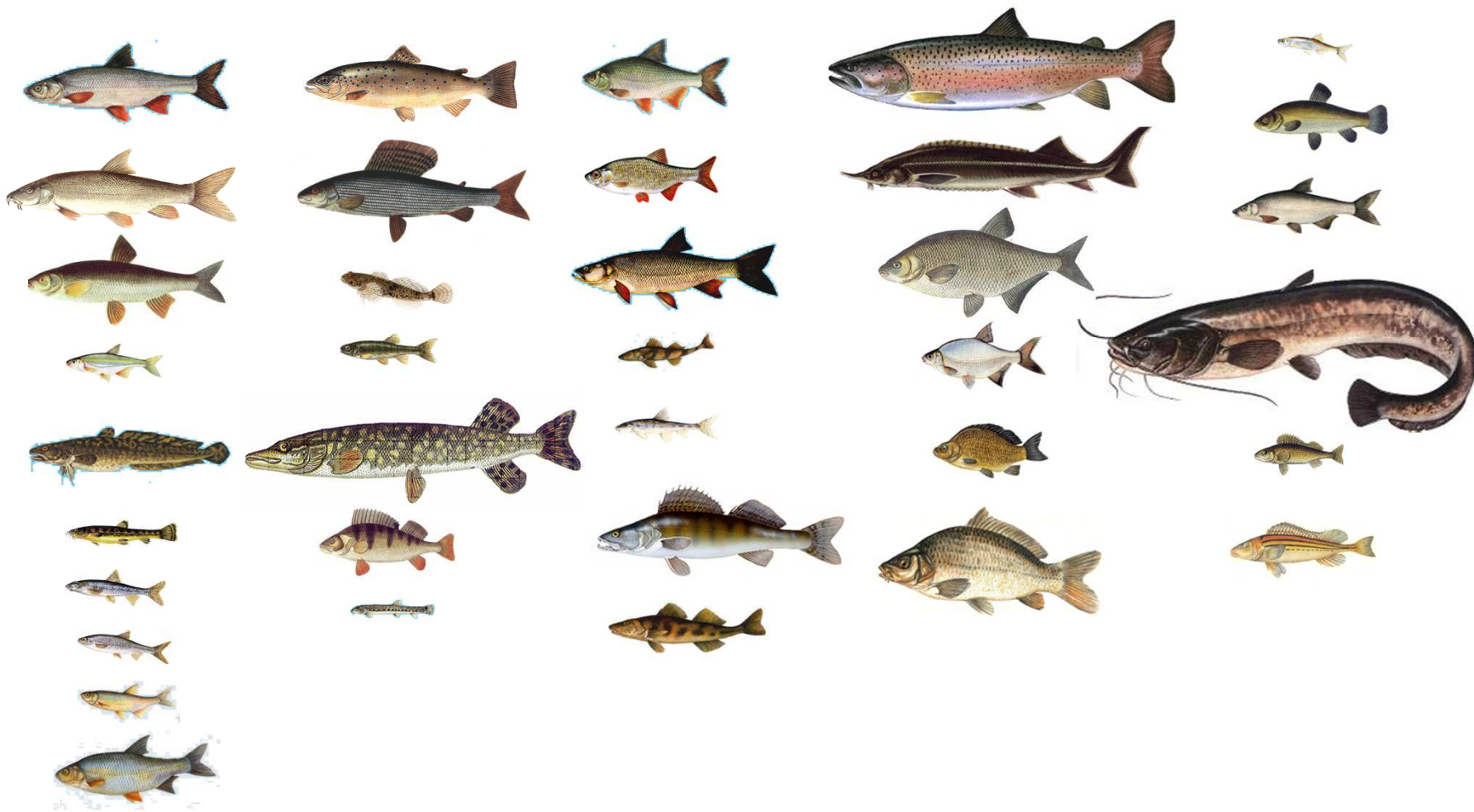












## The Zero Option (do nothing)

- ☺ Status quo
- ☺ Sport fishing (angling)
- ☹ Low biodiversity
- ☹ Genetically non-native individuals
- ☹ The European Framework Directive



*Trout (salmo trutta)*



*Bullhead (Cottus gobio)*

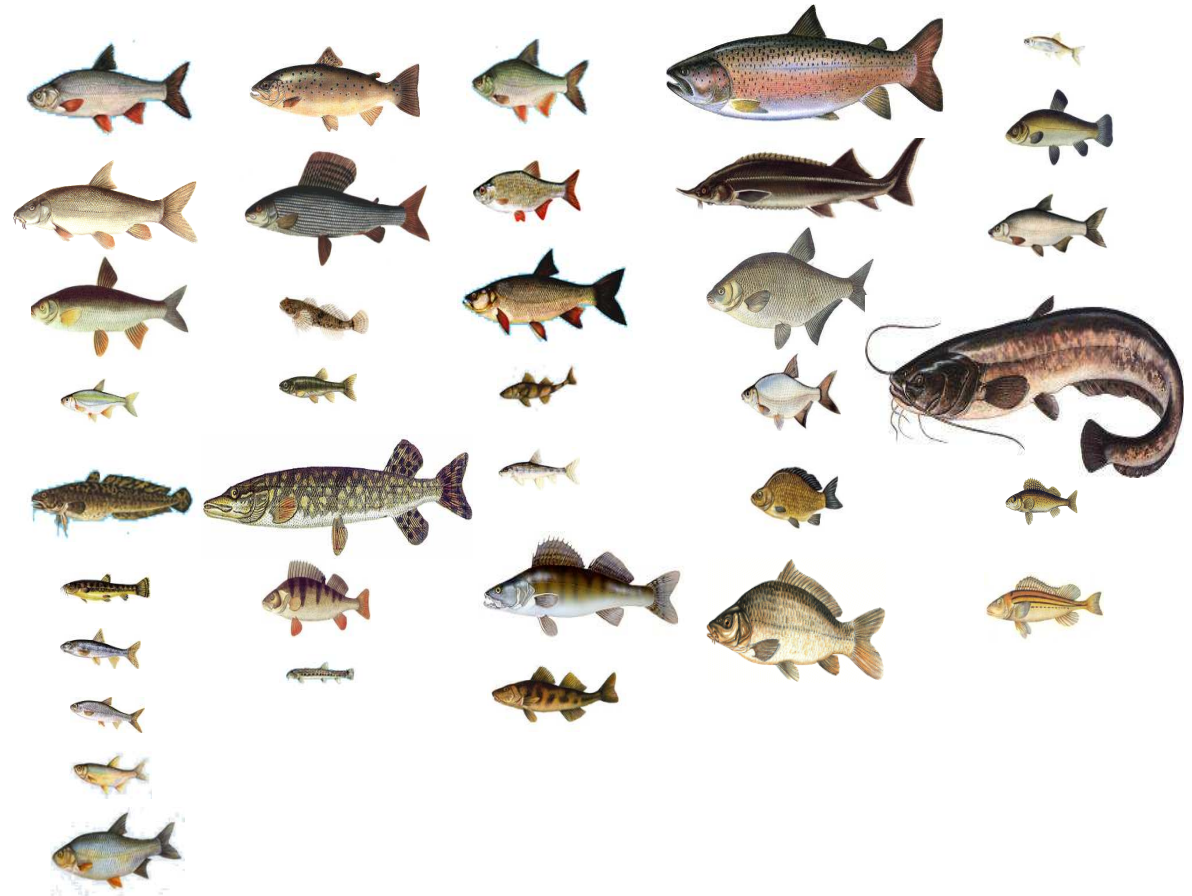
## Original Barbel zone

☺ Achieving of limit goals

☹ irreversible changes

☹ temperature regime

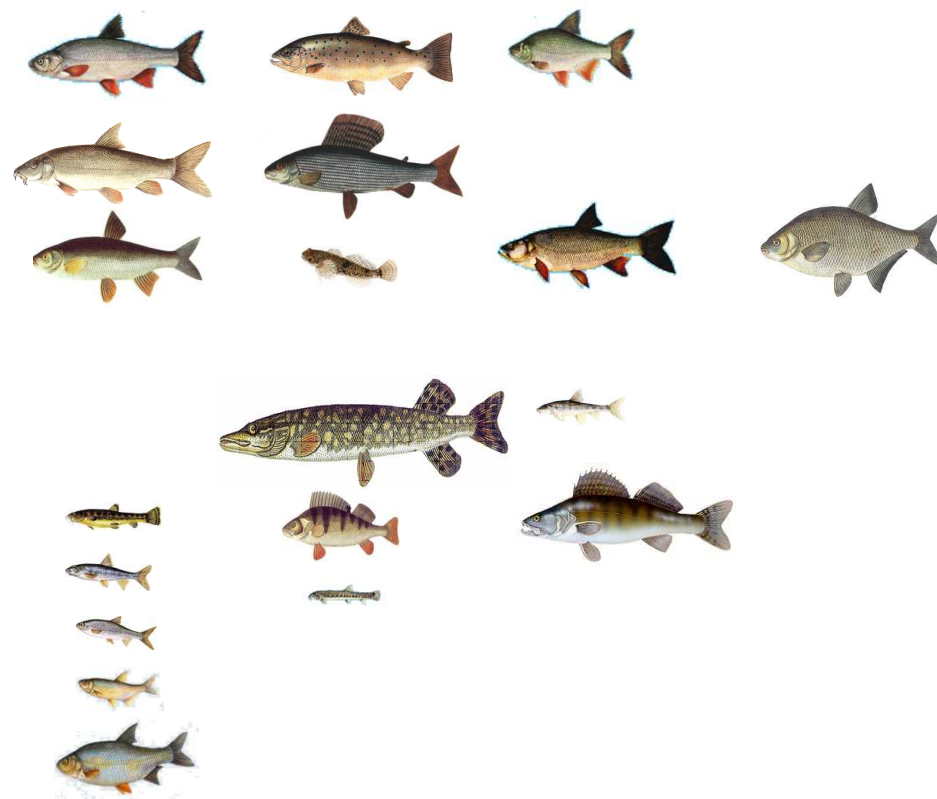
☹ conditions for natural reproduction





## Good ecological potential

- ☺ heavy modified water body
- ☺ Decision of boundary commission
- ☺ recent state
- ☹ the impact of reservoirs
- ☹ fragmentation and migration impermeability
- ☹ flood events
- ☹ piscivorous predators



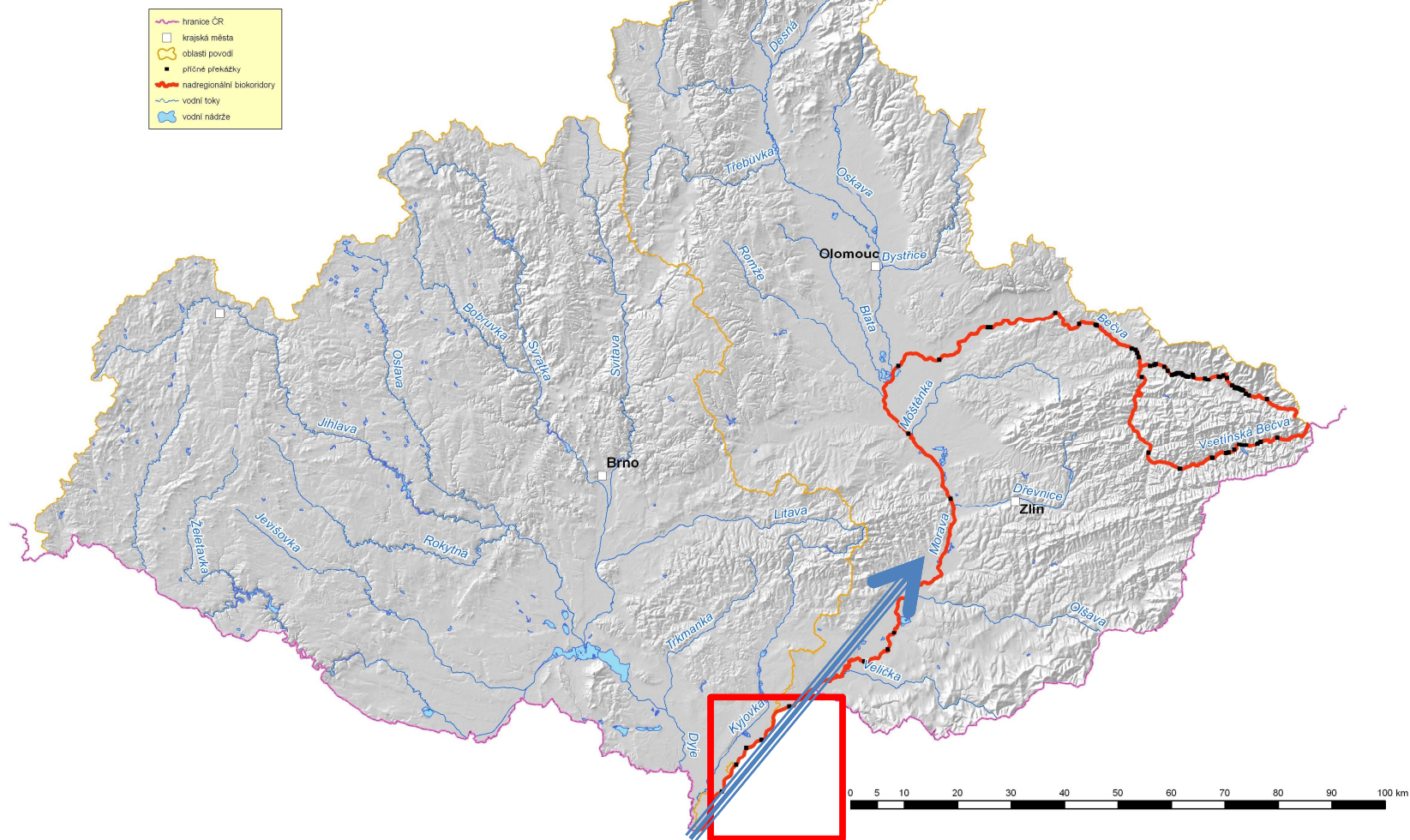








## Nadregionální prioritní biokoridory v povodí Dunaje



zpracováno k 30. 9. 2009



Tube Weir Kopčany  
km 92,720  
HEIGHT: 1,20 + 1,30 m

Weir Tvrdonice  
km 85,385  
HEIGHT: 1,84 m

Rocky Chute Lanžhot  
km 79,500  
HEIGHT: 3,10 m

TubeWeir Lanžhot  
km 76,916  
HEIGHT: 0,94 + 1,20 m

Weir Lanžhot  
km 74,117  
HEIGHT: 1,47 m

REMOVAL

adding of fish ladder

height reduction 0,6 m

REMOVAL

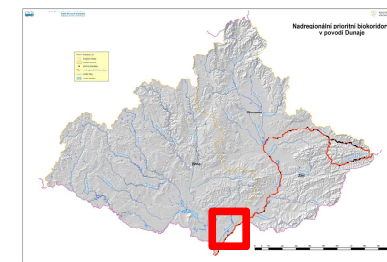
REMOVAL



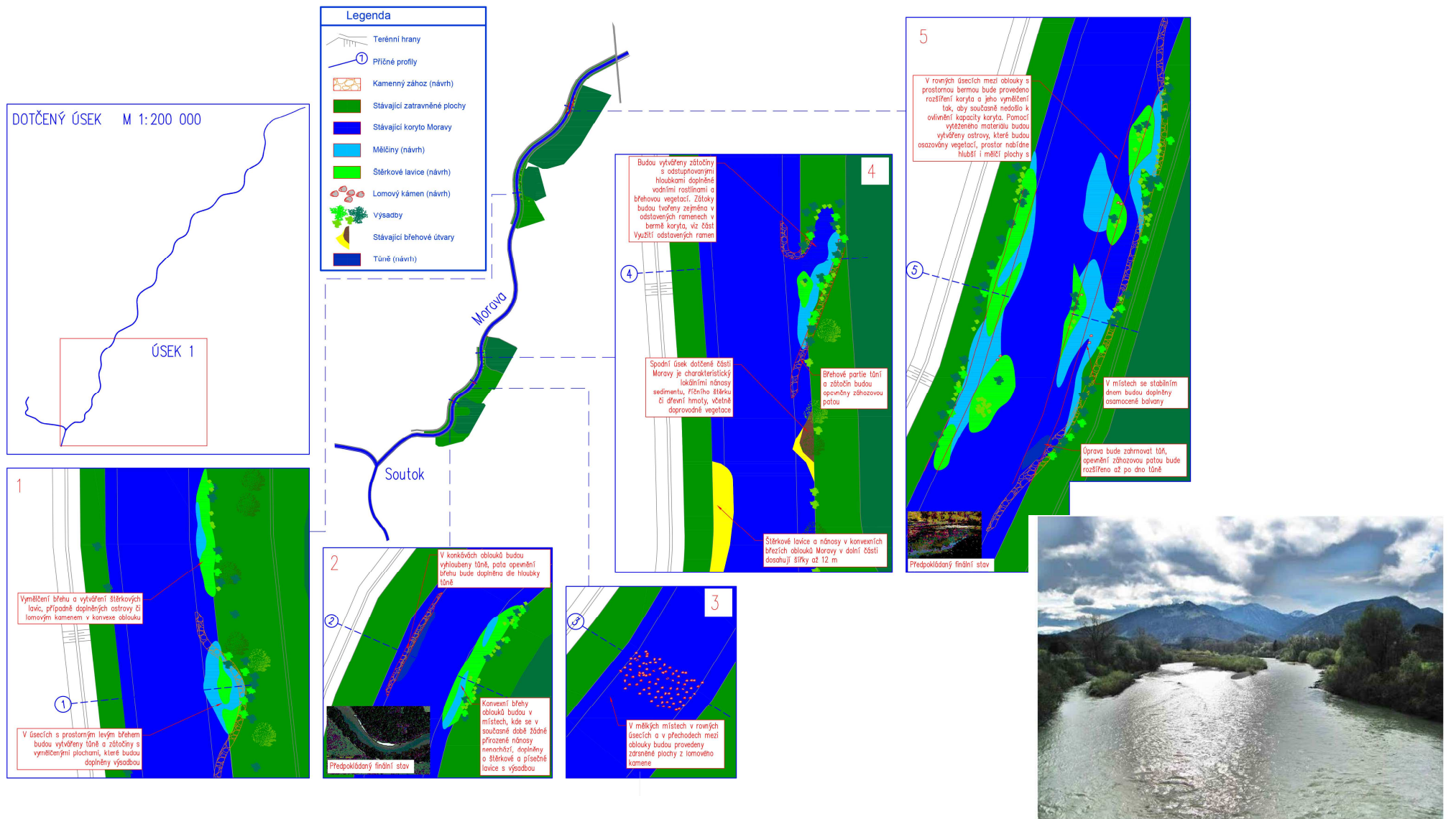
Total HEIGHT: 11,05 m (impermeable)

reduced to

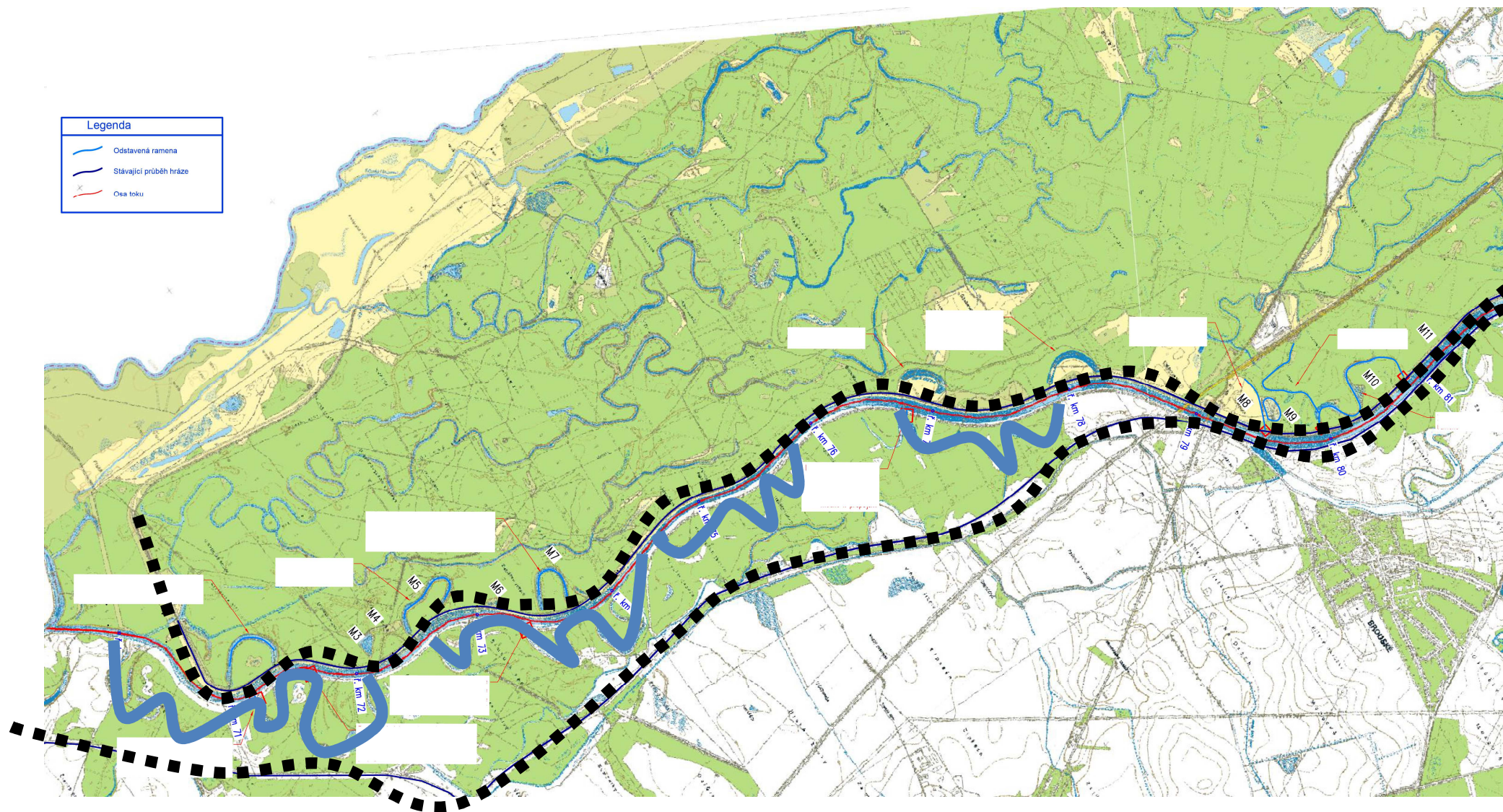
Total HEIGHT: 4.34 m (permeable)





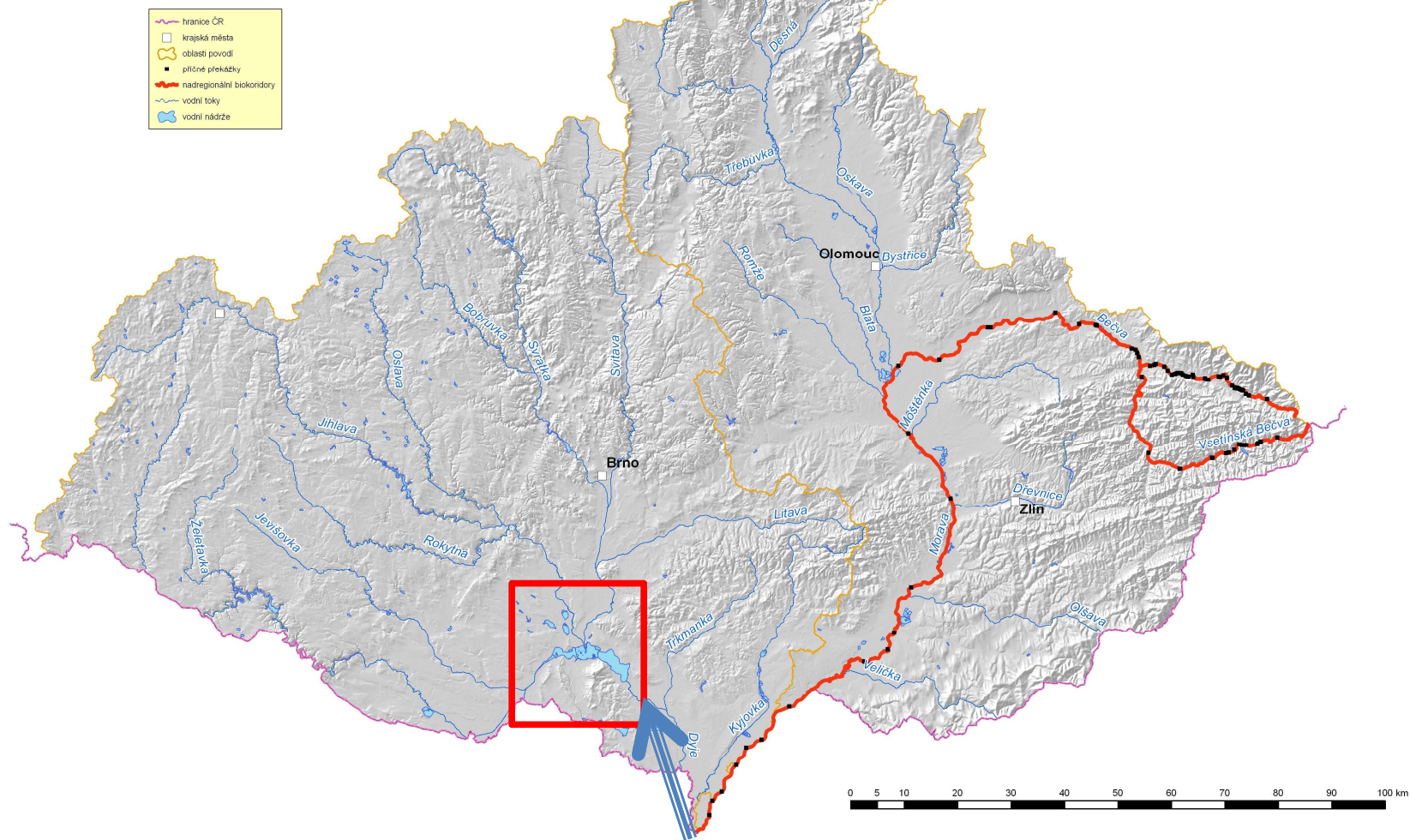






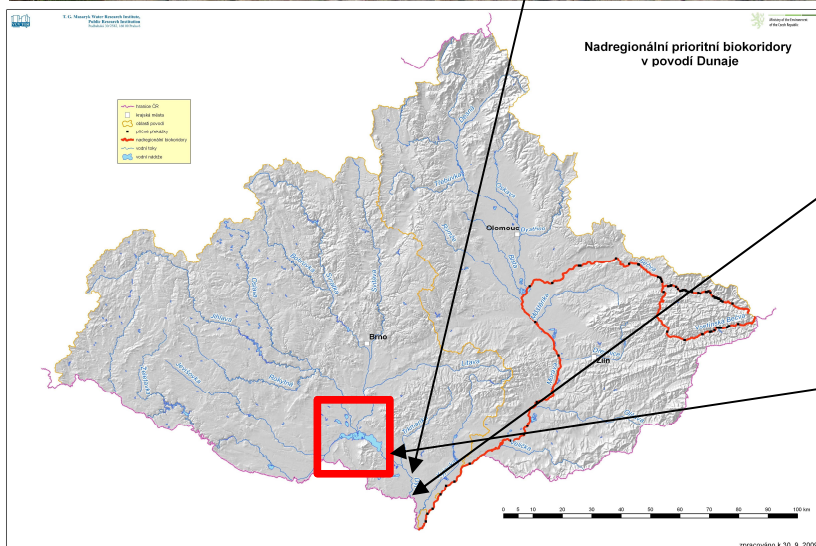


## Nadregionální prioritní biokoridory v povodí Dunaje

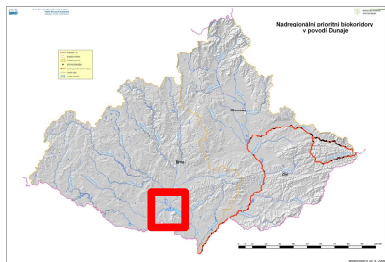


zpracováno k 30. 9. 2009









# Thank you for your attention

Ing. David Veselý

T +420 541 637 278

M +420 724 230 596

E [vesely@pmo.cz](mailto:vesely@pmo.cz)

Povodí Moravy, s.p.,  
Dřevařská 11, 602 00 Brno  
Czech Republic