



University of
Massachusetts
Amherst

Local Stress and Superfluid Properties of Solid ^4He

Item Type	article
Authors	Pollet, L;Boninsegni, M;Kuklov, A;Prokof'ev, Nikolai;Svistunov, Boris;Troyer, M
Download date	2026-05-11 02:33:12
Link to Item	https://hdl.handle.net/20.500.14394/40567

Local stress and superfluid properties of solid ^4He

L. Pollet,¹ M. Boninsegni,² A.B. Kuklov,³ N.V. Prokof'ev,^{1,4,5} B.V. Svistunov,^{4,5} and M. Troyer¹

¹*Theoretische Physik, ETH Zürich, CH-8093 Zürich, Switzerland*

²*Department of Physics, University of Alberta, Edmonton, Alberta T6G 2J1, Canada*

³*Department of Engineering Science and Physics, CUNY, Staten Island, NY 10314, USA*

⁴*Department of Physics, University of Massachusetts, Amherst, MA 01003, USA*

⁵*Russian Research Center "Kurchatov Institute", 123182 Moscow, Russia*

(Dated: May 23, 2008)

More than half a century ago Penrose asked [1]: are the superfluid and solid state of matter mutually exclusive or do there exist “supersolid” materials where the atoms form a regular lattice and simultaneously flow without friction? Recent experiments provide evidence that supersolid behavior indeed exists in ^4He – the most quantum material known in Nature. In this paper we show that large local strain in the vicinity of crystalline defects is the origin of supersolidity in ^4He . Although ideal crystals of ^4He are not supersolid, the gap for vacancy creation closes when applying a moderate stress. While a homogeneous system simply becomes unstable at this point, the stressed core of crystalline defects (dislocations and grain boundaries) undergoes a radical transformation and can become superfluid.

PACS numbers:

The first microscopic mechanism of supersolidity was proposed by Andreev, Lifshitz [2] and Chester [3] arguing that a dilute gas of vacancies could lower the energy of an ideal helium crystal by quantum mechanically delocalizing vacancies. At low enough temperature the vacancies then undergo Bose-Einstein condensation and give rise to a supersolid – and indeed vacancies are required for supersolidity [4]. Although the detection of frictionless mass flow was anticipated to be straightforward, all experimental attempts failed for over thirty years [5] until Kim and Chan reported the observation of an unexpected drop of the torsional oscillator period at low temperatures [6, 7]. Since the period is proportional to the square root of the moment of inertia, the origin of the period shift was attributed to the supersolid decoupling of the ^4He solid mass from the rotating walls. Several groups have now confirmed the basic effect [8, 9, 10, 11] but it is still unclear what physics lies behind these observations, both theoretically and experimentally [12].

First-principle calculations [13, 14] rule out the possibility of supersolidity in ideal equilibrium crystals of ^4He . On the experimental side, no steady flow of mass through the solid phase was detected in several setups [15, 16]. It is believed that the flow detected at the melting curve in Ref. [17] was along liquid channels which form on the cell walls in contact with the grain boundaries, i.e. it was not related to the supersolid phenomenon [12].

The situation has changed radically with the re-

cent observation of the liquid pressure equilibration by flow through a solid in the “UMass sandwich” experiment reported by Ray and Hallock [18] away from the melting curve. The dependence of the flow on the pressure difference was characteristic of critical superflow and inconsistent with the flow of a viscous liquid. In this work, we explain that the origin of superfluidity in solid ^4He is large local strain in the vicinity of crystalline defects. Superfluidity along dislocations or grain boundaries can quantitatively account for the superflow through ^4He crystals observed by Ray and Hallock [18].

In the past several authors have speculated about the possibility of the stress-induced supersolidity [19, 20, 21], especially under hydrostatic decompression since quantum effects and vacancy delocalization are expected to increase at lower densities. The phenomenology missed the attraction between vacancies which destabilizes a dilute homogeneous gas of vacancies. Central questions were left unanswered: what type and strength of stress is needed to close the insulating gap in ^4He and is this stress realistic?

Our approach to this inherently strongly correlated problem is numerical. Feynman’s path-integral formulation of quantum mechanics allows an exact mapping between the ^4He system and a system of world lines in four-dimensional space. The fourth dimension represents evolution in imaginary time and its extent is $\hbar/k_B T$ where \hbar is the reduced Planck’s constant, k_B is the Boltzmann constant and T is temperature. This sys-

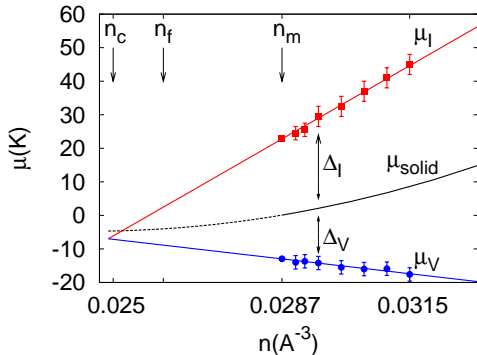


FIG. 1: (Color online) Extrapolation of vacancy (Δ_V) and interstitial (Δ_I) gaps shows that the density corresponding to closing the gap lies in the liquid phase. The data points as a function of density for the ideal hcp solid are taken from Ref. 23. By $\mu_V(\mu_I)$ we denote the threshold chemical potentials for doping the system with vacancies(interstitials).

tem of world lines is simulated efficiently by the quantum Monte Carlo “worm algorithm” [22]. Energy gaps for vacancy and interstitial excitations are readily obtained from the exponential decay in imaginary time of the one-body Green’s function of the system [23].

Hydrostatic decompression After initial attempts to detect the supersolid state in ^4He failed, it was suggested that a metastable supersolid can form in crystals decompressed below their melting density of $n_m = 0.0287 \text{ \AA}^{-3}$ (the freezing density is $n_f = 0.0261 \text{ \AA}^{-3}$). The idea turned out to be impossible to realize experimentally, and now we understand why it was implausible in the first place. In Fig. 1 we show the density dependence of the vacancy and interstitial gaps. Though the simulation data are available for densities $n > n_m$ they can be readily and reliably extrapolated to lower densities $n < n_m$ using the near perfect linear density dependence. One can easily see that metastable hcp crystals remain insulating all the way to liquid densities and even beyond. It is unlikely that the solid structure will survive for long at liquid densities, and neither will the possible supersolid phase at density $n_c \approx 0.025 \text{ \AA}^{-3}$. The hydrostatic strain required to reach this density is about $(n_m/n_c - 1)^{1/3} \approx 13.5 \%$. Assuming solid compressibility at melting [24] the required underpressure is close to -25 bar.

The stability of the metastable supersolid phase depends on the sign of the effective interactions between vacancies since an attractive Bose gas is unstable: for the vacancy gas this means a col-

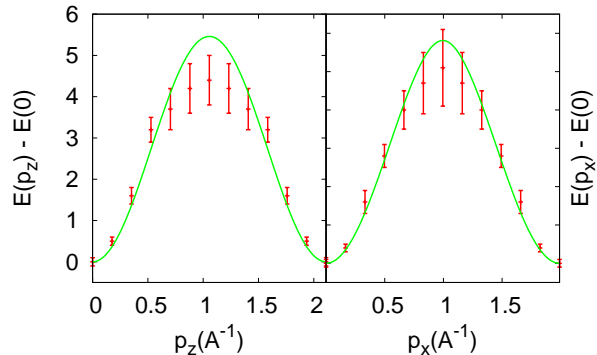


FIG. 2: (Color online) Vacancy dispersion relation of the lowest band along the reciprocal lattice directions p_z and p_x for a system of $12 \times 12 \times 12$ particles calculated at a density $n = 0.0292 \text{ \AA}^{-3}$ and temperature $T = 0.2\text{K}$. For the hcp lattice with two atoms in the unit cell there are two hopping amplitudes, one in the basal plane (t_\perp), and one (t_z), along the ΓA direction. At low temperatures the Monte Carlo method will project out the lowest branch of the dispersion relation.

lapse to the lower density liquid. To determine the sign and strength of the vacancy-vacancy interaction one has to know their mass m^* and their pair correlation function $\nu(r)$. In the ideal gas $\nu(r)$ is enhanced at short distances by a factor of two relative to the large distance limit. Correspondingly, for repulsive/attractive interactions $\nu(r)$ is suppressed/enhanced relative to the ideal gas behavior. If attractive interactions are so strong that vacancies actually form a bound state, then $\nu(r)$ is enhanced exponentially, and the decay of the correlation function with distance can be used to determine the binding energy from $\nu(r) \propto \exp(-2\sqrt{m^*E_b}r)$.

In Fig. 2 we present the vacancy dispersion relation which is analyzed within the tight-binding approximation of Ref. [25], obtaining tunneling amplitudes $t_z = 0.45(5) K$ and $t_\perp = 0.50(5) K$ and effective masses $m_z^* = 0.45(5)$ and $m_\perp^* = 0.42(5)$ in units of the bare ^4He mass. We find that the effective mass is about two times lighter than that of ^4He atoms, and nearly isotropic. There is a small difference with the variational calculation of Ref. [25] which reported $m_\perp^* = 0.31$ in the basal plane and $m_z^* = 0.38$ along the ΓA direction.

In Fig. 3 we show the vacancy-vacancy correlation function, decreasing exponentially with distance. This is concrete evidence showing that interactions between vacancies are attractive and strong enough to form a bound state. From the

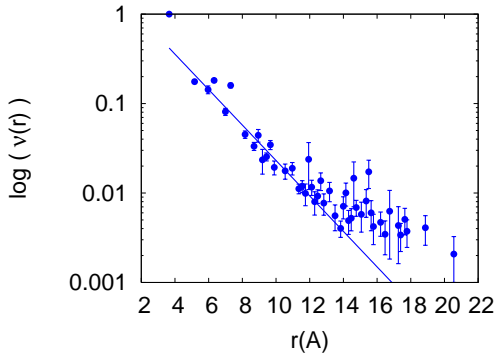


FIG. 3: (Color online) The probability of finding two vacancies at a distance r . The initial decay is fit with the exponential function $\nu(r) \propto \exp(-2\sqrt{m^*E_b}r)$ with $E_b = 1.4(5)$ K. The simulation was performed for the hcp solid with $6 \times 6 \times 6$ lattice points and 214 atoms at a density $n = 0.0292\text{\AA}^{-3}$ and temperature $T = 0.5$ K. At large distances the probability reaches a plateau due to finite temperature effects.

exponential fit we estimate the binding energy to be $E_b = 1.4(5)$ K. We conclude that the hcp structure at n_c is kinetically unstable against collapse to the liquid state, and a supersolid in a decompressed crystals is not possible in the homogeneous setup. As a side remark we note that the equilibrium density of vacancies at finite temperature $n_V = (m^*T/2\pi)^{3/2}e^{-\Delta_V/T} \approx 0.015 n e^{-\Delta_V/T}$ involves a very small pre-exponential factor in addition to the exponential suppression, which rules out their possible role in thermodynamics at temperatures below 1K.

Anisotropic stress We now turn to the study of crystals with non-zero diagonal components of the strain tensor u_{xx} , u_{yy} and $u_{zz} = -u_{xx} - u_{yy}$. The phenomenology of the strain induced supersolidity in the hcp structure [20] is based on the minimal energy density allowed by symmetry: $\epsilon = (a_z - a_\perp)u_{zz}|\psi|^2$ for the anisotropic stress and $\epsilon = (a_z u_{zz} + a_\perp(u_{xx} + u_{yy}))|\psi|^2$ for hydrostatic stress, where ψ is the superfluid order parameter. In the simulations we find (see Fig. 4) that a strain $u_{zz} = 2u_{xx} = 2u_{yy}$ of about 10-12% is necessary to close the gap for vacancy formation, and at higher strain the hcp structure collapses. Such a strain corresponds to a stress $\sigma_{zz} = C_{33}u_{zz} + C_{13}(u_{xx} + u_{yy}) = (C_{33} - C_{13})u_{zz}$ of approximately 50 bar, hardly achievable under realistic experimental conditions. Our data shows that within error bars there is initially no dependence of the gap on anisotropic compression. Thus the linear coupling to the anisotropic strain is close

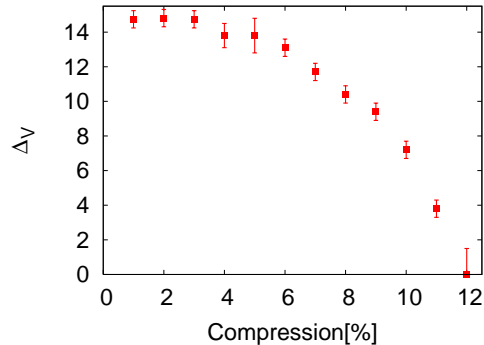


FIG. 4: (Color online) Gaps for vacancy formation under anisotropic compression. An ideal hcp solid of size $6 \times 8 \times 8$ at density $n = 0.0292 \text{\AA}^{-3}$ is subjected to anisotropic compression along the z direction. The volume is kept constant by dilatation in the basal plane. The temperature is $T = 0.25$ K.

to zero, $a_z \approx a_\perp$, and one has to go beyond linear theory to account for the observed effects, and the closing of the gap.

Shear stress By symmetry there is no linear coupling between $|\psi|^2$ and shear strain characterized by the off-diagonal components u_{zx} , u_{yx} , u_{zy} . The anticipated strain dependence of the gap is quadratic, $\Delta_V = \Delta_V^{(0)}[1 - (u_{zx}^2 + u_{zy}^2/u_c^2)]$. Our results in Fig. 5 allow us to estimate the critical value of shear strain as $u_c \approx 0.15$. Using measured values of the elastic modulus $C_{44} \approx 120$ -130 bar [26] the corresponding critical shear stress, $2C_{44}u_c$, for closing an insulating gap in the hcp ^4He is about 35 bar.

Superfluidity along crystalline defects Even though the homogeneous strain-induced supersolid phase is unstable, it can form locally if non-uniform strain accumulating close to structural defects exceeds the critical value and destabilizes parts of the crystal. The most probable candidates for such highly strained superfluid defects are dislocations [19, 20, 21], with edge dislocations attracting most attention in the past because they produce strain coupling linearly to the superfluid order parameter. Contrary to expectations, the first evidence for superfluidity in the dislocation core was reported for screw dislocations oriented along the \hat{z} -direction [27]. These defects are characterized by the non-zero values of u_{zz} which can be estimated by dividing the modulus of the Burgers vector $b_z = \sqrt{8/3}a$ by twice the circumference of the circle going through the atoms closest to the core, $4\pi a/\sqrt{3}$. The estimated strain

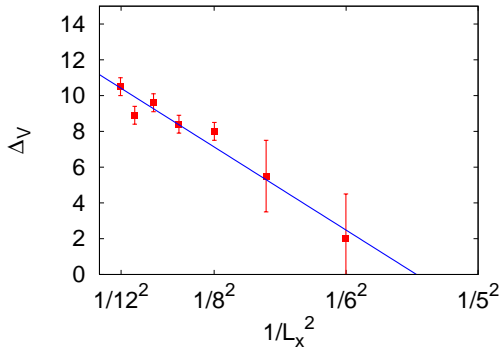


FIG. 5: (Color online) Gaps for vacancy formation under shear stress. An ideal hcp solid of size $L_x \times 12 \times 12$ at density $n = 0.0292 \text{ \AA}^{-3}$ is subjected to shear stress along the z direction by uniformly deforming the sample so that the atoms at boundary $x = aL_x$ (with $a = 3.645 \text{ \AA}$) are shifted exactly by one lattice period $c = \sqrt{8/3}a$ along the c -axis in order to match the periodic boundary conditions. The strain introduced is defined by $u_{zx} = \sqrt{2/3}/L_x$ and, for the chosen sizes $L_x = 12 - 5$, the strain ranges from 0.07 down to 0.15. The temperature is $T = 0.2\text{K}$.

$\sqrt{u_{xz}^2 + u_{yz}^2} = 1/(\sqrt{2}\pi) \approx 0.22$ exceeds the threshold value of $u_c = 0.15$ found above. This explains why the superfluid density of the screw dislocation involves nearly all atoms closest to the nucleus.

An alternative mechanism to release large strain at the core is to split the core into two parts, each characterized by half the Burgers vector. Whether this actually happens depends on the dislocation type and the energy of the domain wall stretching between the cores (the energy of stacking faults in hcp lattices is relatively low). For screw dislocations the core splitting mechanism is not effective.

Similar considerations apply to edge dislocations and grain boundaries, where simulations have detected superfluidity in some randomly oriented grain boundaries [28], but the majority of small angle boundaries and stacking faults were found to be insulating. Simple estimates of strain in the vicinity of the defect cores range from 0.05 to 0.2, depending on the geometry and an effective Burgers vector, which may be reduced if the split-core mechanism is effective.

Conclusions There is growing experimental evidence for unexpected properties of solid ^4He at low temperature, including superfluid mass flow through the solid. The observed dependence on sample history, growth conditions, annealing and cooling procedures, indicate that crystalline defects are important for our understanding of the

most quantum solid in Nature. The actual structure of defects is essentially unexplored territory, not less interesting than the solid matrix they reside in. Similar exciting phenomena occur at defects and interfaces in electronic systems [29, 30]. In this work we determined the critical values of the strain which are required to destabilize the hcp structure of ^4He by closing its insulating gap, and find that these thresholds are small enough to be exceeded at the dislocation cores and grain boundaries. Local stresses thus hold the key to supersolidity of ^4He .

This work was supported by the National Science Foundation under Grants Nos. PHY-0653183 and PHY-065135, CDRF grant No. 2853, the Natural Science and Engineering Research Council of Canada under research grant G121210893, and the Swiss National Science Foundation. Simulations were performed on Hreidar (ETH Zurich), Typhon and Athena (CSI), and Masha (UMass) Beowulf clusters.

-
- [1] O. Penrose, *Phil. Mag.* **42**, 1373 (1951)
 - [2] A. F. Andreev and I. M. Lifshitz, *Sov. Phys. JETP* **29**, 1107 (1969).
 - [3] G. V. Chester, *Phys. Rev. A* **2**, 256 (1970).
 - [4] N. Prokof'ev and B. Svistunov, *Phys. Rev. Lett.* **94**, 155302 (2005).
 - [5] M. W. Meisel, *Physica B* **178**, 121 (1992).
 - [6] E. Kim and M. H. W. Chan, *Nature* **427**, 225 (2004).
 - [7] E. Kim and M. H. W. Chan, *Science* **305**, 1941 (2004).
 - [8] A. S. C. Rittner and J. D. Reppy, *Phys. Rev. Lett.* **97**, 165301 (2006); *ibid* **98**, 175302 (2007).
 - [9] Y. Aoki, J.C. Graves, and H. Kojima, *Phys. Rev. Lett.* **99**, 015301 (2007).
 - [10] M. Kondo, S. Takada, Y. Shibayama, and K. Shirahama, *J. Low temp. Phys.* **148**, 695 (2007).
 - [11] A. Penzev, Y. Yasuta, and M. Kubota, *J. Low temp. Phys.* **148**, 677 (2007).
 - [12] S. Balibar and F. Caupin, *J. Phys.: Cond. Matter* **20**, 173201 (2008).
 - [13] M. Boninsegni, N. Prokof'ev and B. Svistunov, *Phys. Rev. Lett.* **96**, 105301 (2006).
 - [14] B. K. Clark and D. M. Ceperley, *Phys. Rev. Lett.* **96**, 105302 (2006).
 - [15] D. S. Greywall, *Phys. Rev. B* **16**, 1291 (1977).
 - [16] J. Day, and J. Beamish, *Phys. Rev. Lett.* **96**, 105304 (2006).
 - [17] S. Sasaki, R. Ishiguro, F. Caupin, H. J. Maris, and S. Balibar, *Science* **313**, 1098 (2006).
 - [18] M. Ray and B. Hallock, cond-mat/0805.0009, submitted to *Phys. Rev. Lett.* (2008).

- [19] S. I. Shevchenko, *Sov. J. Low Temp. Phys.* **13**, 61 (1987).
- [20] A. T. Dorsey, P. M. Goldbart and J. Toner, *Phys. Rev. Lett.* **96**, 055301 (2006).
- [21] J. Toner, *Phys. Rev. Lett.* **100**, 035302 (2008).
- [22] M. Boninsegni, N. Prokof'ev, and B. Svistunov, *Phys. Rev. Lett.* **96**, 070601 (2006); *Phys. Rev. E* **74**, 036701 (2006).
- [23] M. Boninsegni, A. B. Kuklov, L. Pollet, N. V. Prokof'ev, B. V. Svistunov, and M. Troyer, *Phys. Rev. Lett.* **97**, 080401 (2006).
- [24] J.F. Jarvis, D. Ramm, and H. Meyer, *Phys. Rev.* **170**, 320 (1968).
- [25] D. E. Galli and L. Reatto, *Phys. Rev. Lett.* **90**⁵, 175301 (2003).
- [26] D.S. Greywall, *Phys. Rev. B* **16**, 5127 (1977).
- [27] M. Boninsegni, A. B. Kuklov, L. Pollet, N. V. Prokof'ev, B. V. Svistunov and M. Troyer, *Phys. Rev. Lett.* **99**, 035301 (2007).
- [28] L. Pollet, M. Boninsegni, A. B. Kuklov, N. V. Prokof'ev, B. V. Svistunov, and M. Troyer, *Phys. Rev. Lett.* **98**, 15301 (2007).
- [29] V. M. Nabutovskii and V. Ya. Shapiro, *Sov. Phys. JETP* **48**, 480 (1978).
- [30] E. Dagotto, *Science* **318**, 1076 (2007).