



University of  
Massachusetts  
Amherst

## From Artifact to Narrative: Viewing the Cypriot Past in the Cypriot Present

Item Type	article;article
Authors	Bierly, Jill
Download date	2025-05-13 13:45:45
Item License	<a href="http://creativecommons.org/licenses/by-nd/3.0/">http://creativecommons.org/licenses/by-nd/3.0/</a>
Link to Item	<a href="https://hdl.handle.net/20.500.14394/7388">https://hdl.handle.net/20.500.14394/7388</a>

# From Artifact to Narrative: Viewing the Cypriot Past in the Cypriot Present



Jill Bierly  
Graduate Student  
Department of Anthropology  
University of Massachusetts Amherst

# Trade Routes of the Eastern Mediterranean

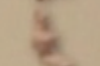


CYPRUS  
CHRONOLOGICAL TABLE

Neolithic Period  
7500-3800 B.C.



Chalcolithic Period  
3900-2500 B.C.



Early Bronze Age  
2500-1900 B.C.



Middle Bronze Age  
1900-1450 B.C.



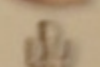
Late Bronze Age  
1450-1050 B.C.



Geometric Period  
1050-750 B.C.



Archaic Period  
750-475 B.C.



Classical Period  
475-325 B.C.



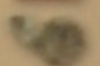
Hellenistic Period  
325-99 B.C.



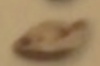
Roman Period  
50 B.C.-395 A.D.



Byzantine Period  
395-1185



Frankish Rule  
1191-1489



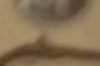
Venetian Rule  
1489-1571



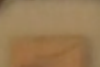
Ottoman Rule  
1571-1878



British Colonial Rule  
1878-1960



Cyprus as Independent  
Republic 1960



PERICLES MUSEUM  
LARI GROUP CULTURAL CENTRE

4, Savastros Avenue Street, 2022 Larnaca - Cyprus  
Tel: +357 24814533, Fax: +357 24817048  
e-mail: periclesmuseum@per.com

# The Island Everyone Wanted

An Illustrated History of Cyprus



**WINNER**

2008  
Cyprus National  
Book Award  
for Best Illustrated  
Children's Book

[www.theislandeveryonewanted.com](http://www.theislandeveryonewanted.com)

By Marina Christofides  
Illustrated by Eleni Lambrou

ΧΡΟΝΟΛΟΓΙΚΟΣ ΠΙΝΑΚΑΣ  
ΤΗΣ ΚΥΠΡΟΥ

Νεολιθική εποχή  
7500-3800 π.Χ.



Χαλκολιθική εποχή  
3900-2500 π.Χ.



Πρώιμη εποχή του Χαλκού  
2500-1900 π.Χ.



Μέση εποχή του Χαλκού  
1900-1450 π.Χ.



Υστερή εποχή του Χαλκού  
1450-1050 π.Χ.



Γεωμετρική περίοδος  
1050-750 π.Χ.



Αρχαϊκή περίοδος  
750-475 π.Χ.



Κλασική περίοδος  
475-325 π.Χ.



Ελληνιστική περίοδος  
325-99 π.Χ.



Ρωμαϊκή περίοδος  
50 π.Χ.-395 μ.Χ.



Βυζαντινή περίοδος  
395-1185



Φραγκική κυριαρχία  
1191-1489



Βενετική κυριαρχία  
1489-1571



Οθωμανική κυριαρχία  
1571-1878



Αγγλική κυριαρχία  
1878-1960



Κυπριακή Δημοκρατία  
1960



ΜΟΥΣΕΙΟ ΠΕΡΙΚΛΗΣ  
ΠΟΛΙΤΙΣΤΙΚΟ ΚΕΝΤΡΟ ΟΡΓΑΝΟΥ ΛΑΡΝΑΚΗΣ

Σταυρού Κωνσταντίνου 4, 2022 Λάρνακα - Κύπρος  
Τηλ: +357 24814533, Φαξ: +357 24817048  
e-mail: periclesmuseum@per.com

# Methodology: Transect Walking and the Presentation of Heritage

The Aphrodite  
Cultural Route



At the Pieridies Foundation  
Museum in Larnaca



# Methodology: Transect Walking and the Presentation of Heritage

## The Aphrodite Cultural Route

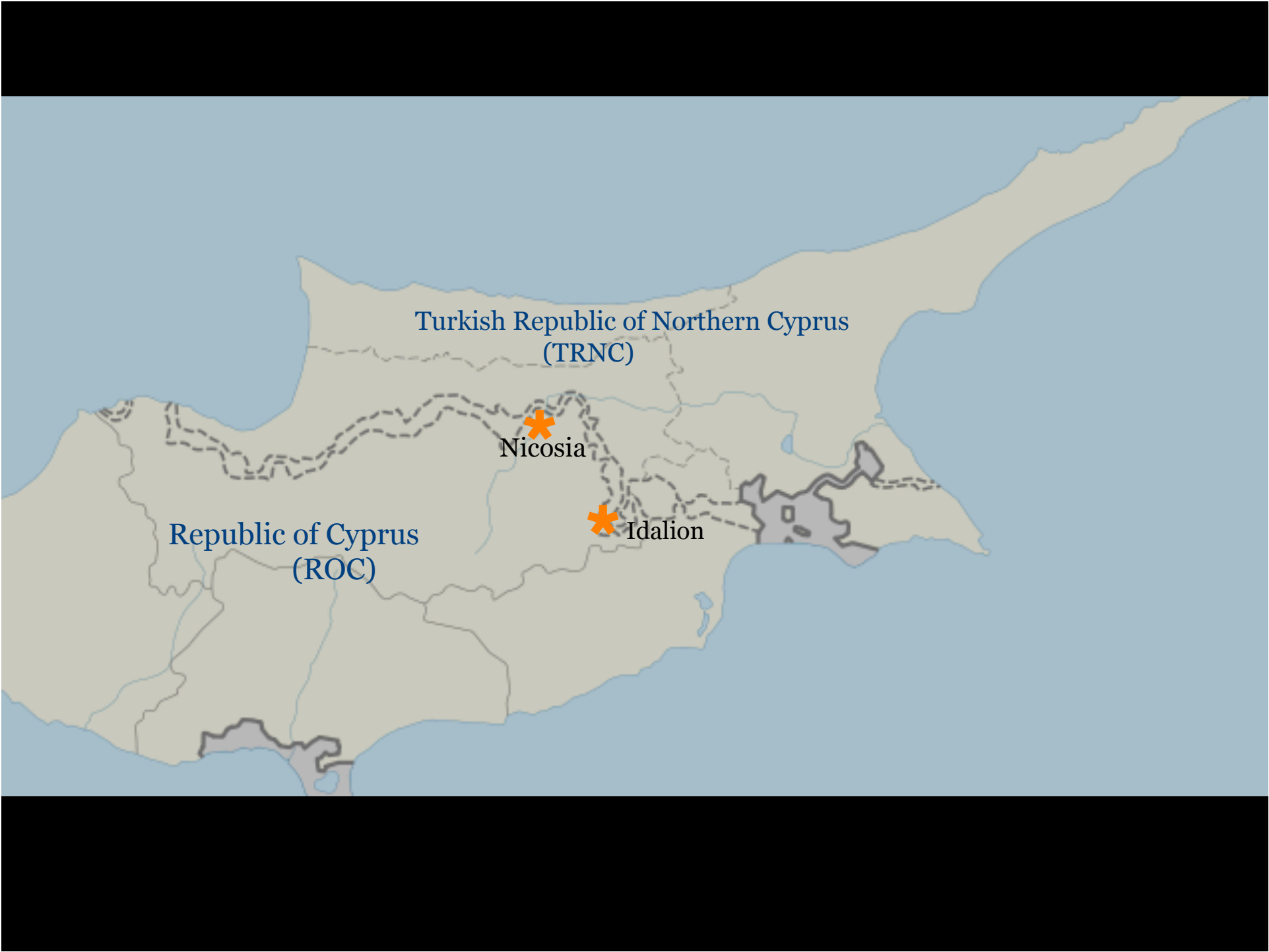


At ancient Kition, modern Larnaca



# The Ancient City-Kingdoms of Cyprus





Turkish Republic of Northern Cyprus  
(TRNC)

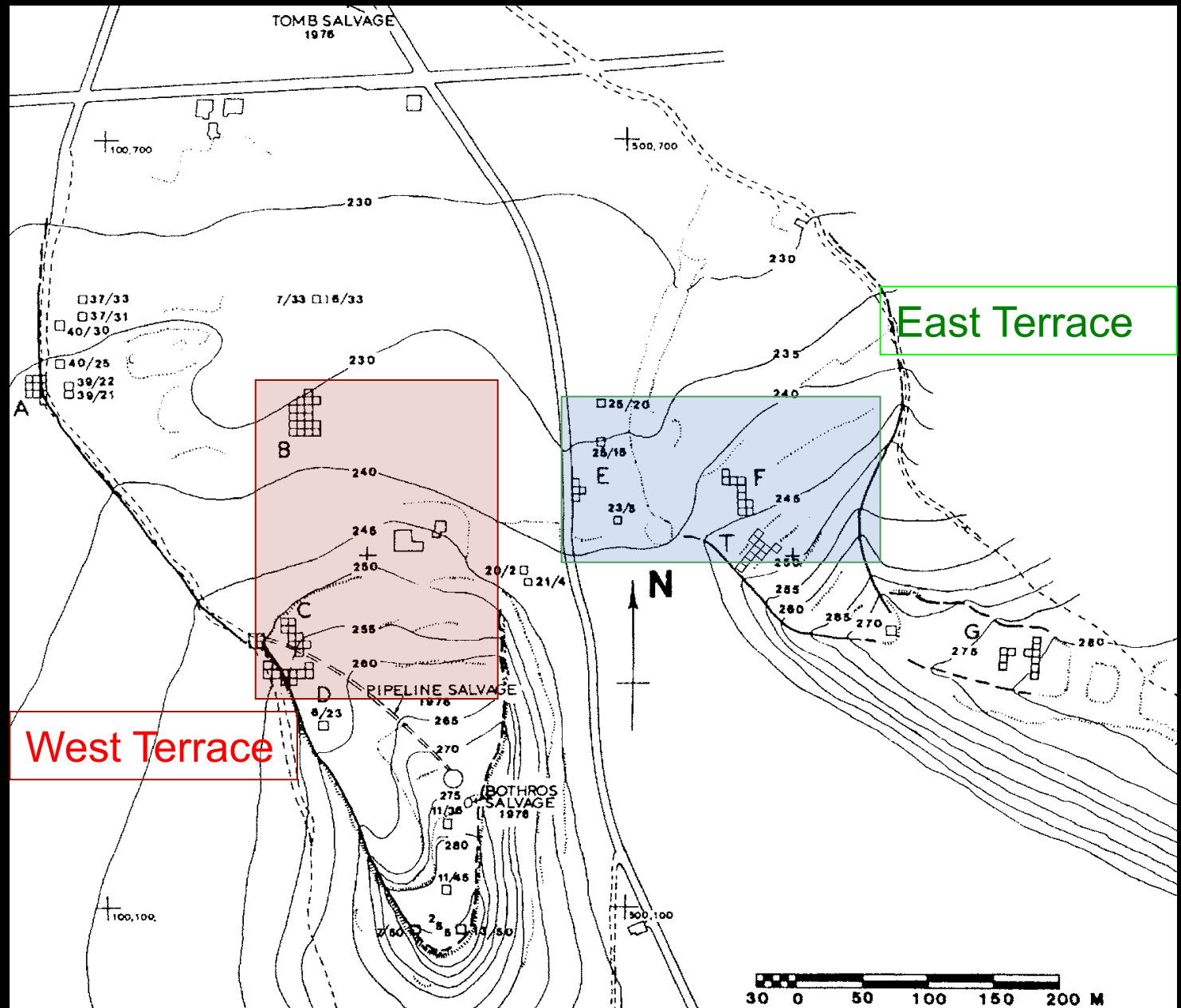
Nicosia

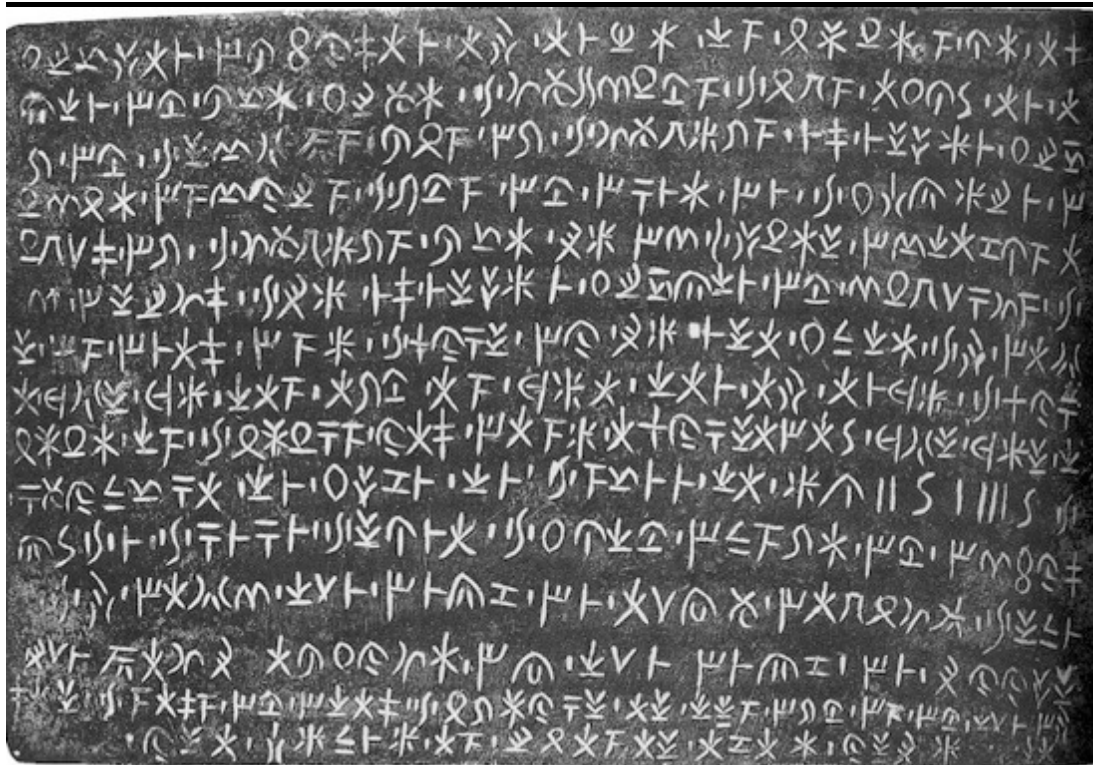
Republic of Cyprus  
(ROC)

Idalion



# Idalion Site Plan





Bronze Tablet  
detailing a grant of land by  
King Stasikypros

Coin of Stasikypros,  
the last king to issue  
independent coinage  
from Idalion



- Phoenician inscription written on gypsum plaque in black paint
- The 1974 expedition to Idalion uncovered a Phoenician inscription that references a Phoenician king of Idalion... the context of its findspot suggests a date of around 312 BCE around the time of the invasion and destruction of Idalion by Ptolemaic forces



# Phoenician Administration Center of Idalion



# Tamassos Gate: Western “exit” from the Phoenician Administrative Complex

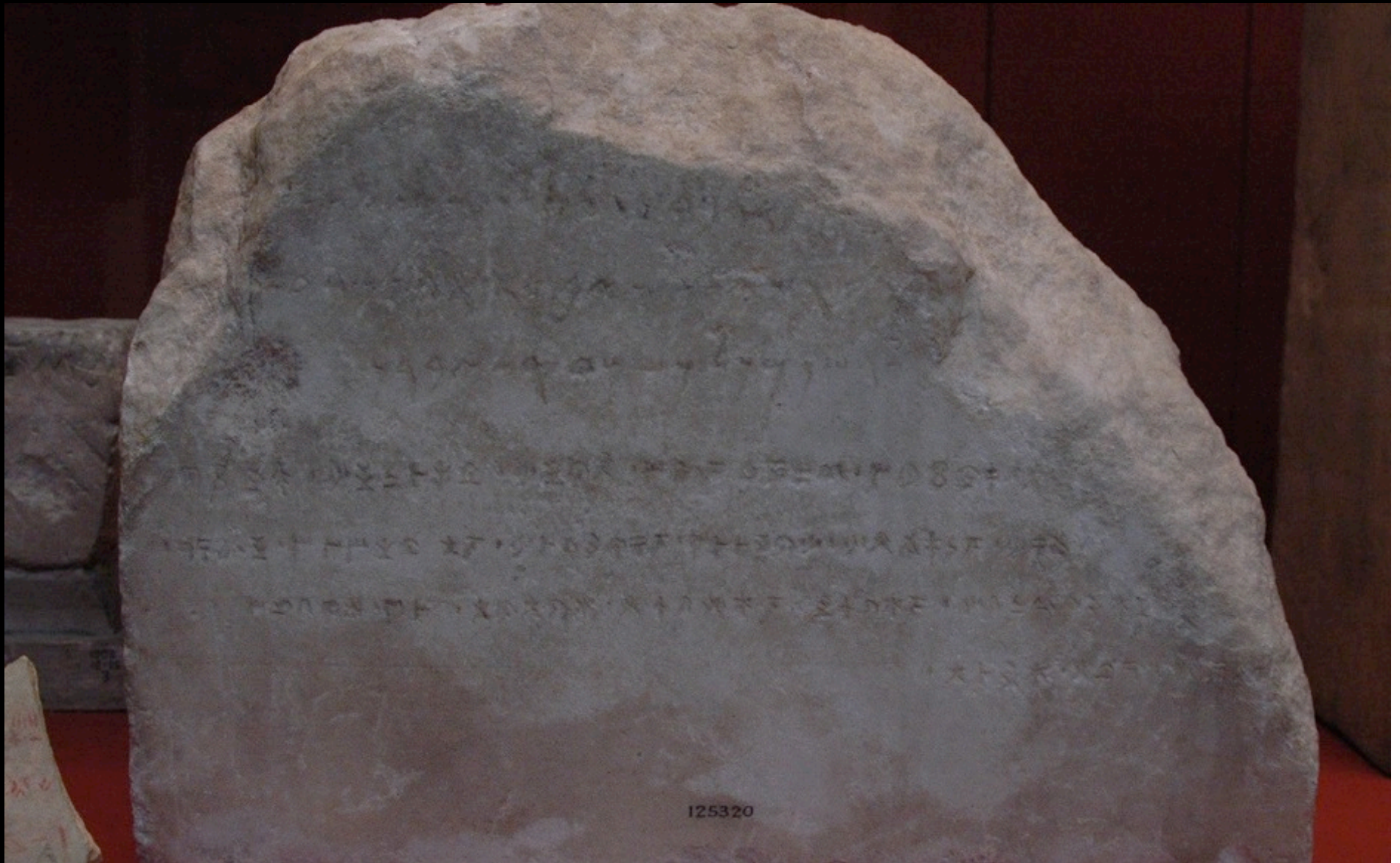


# Idalion

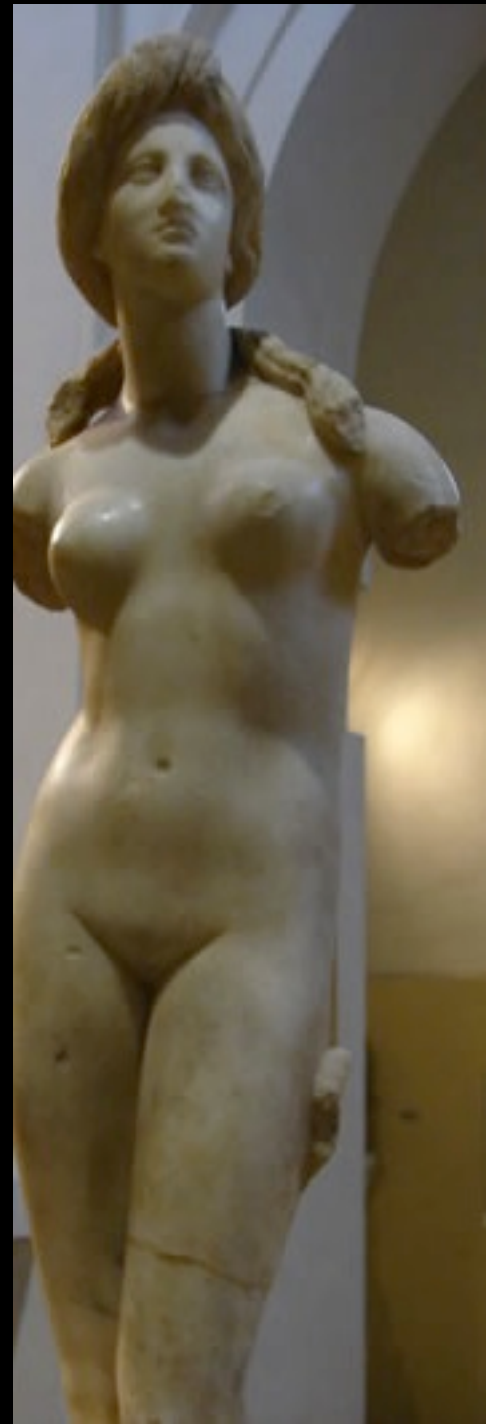




Bilingual inscription (Phoenician and Cypriot), dedicated to Apollo by Milkyathon, King of Kition and Idalion, early 4th century BCE





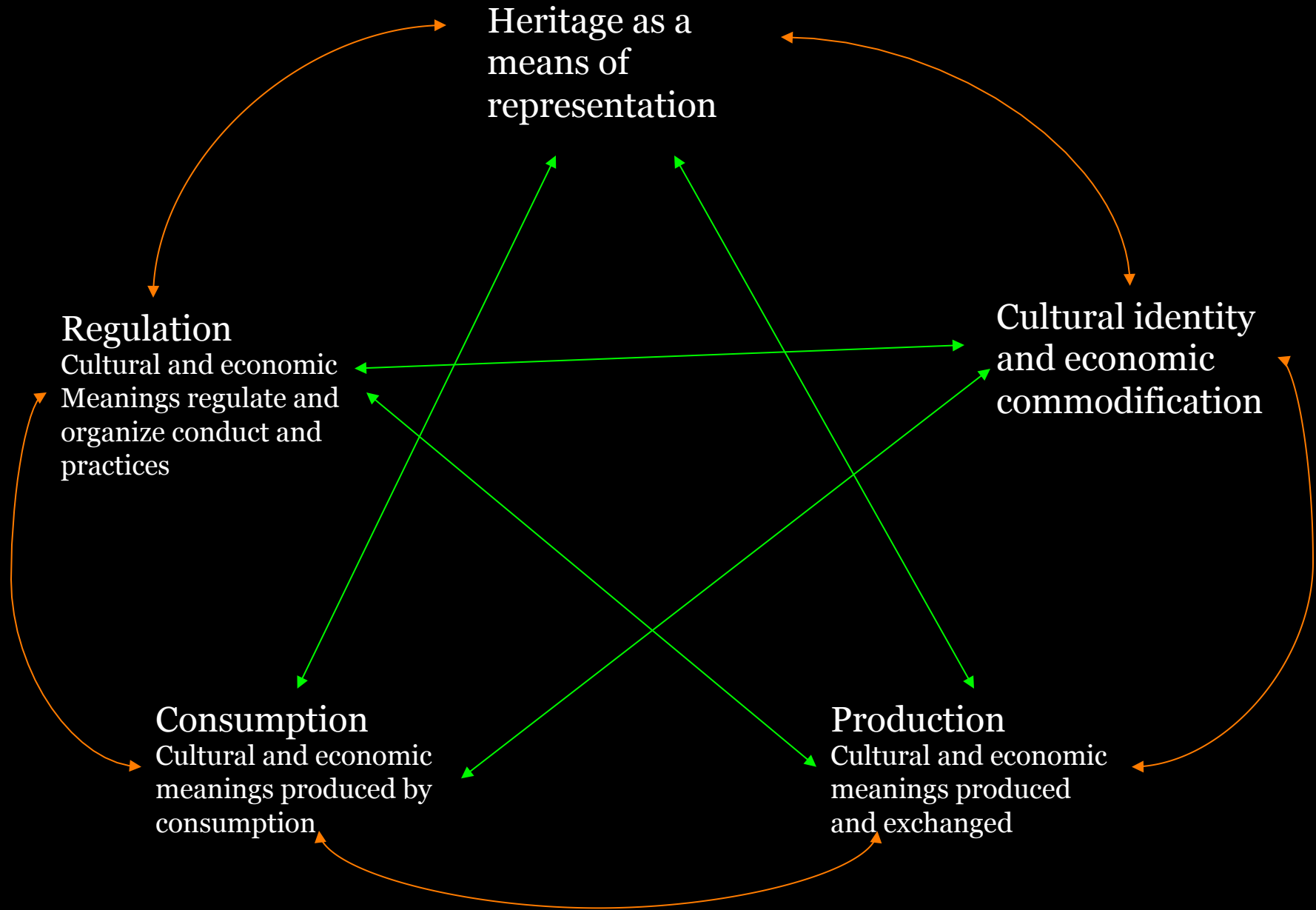


“People build emotional and cognitive relationships with objects; they use them to express symbolic meanings, to signify identities, relationships and perceptions. Materiality may be understood as the expression of social identity and group behavior through the use of specific objects and related social practices” (Marina Gkiasta 2010).

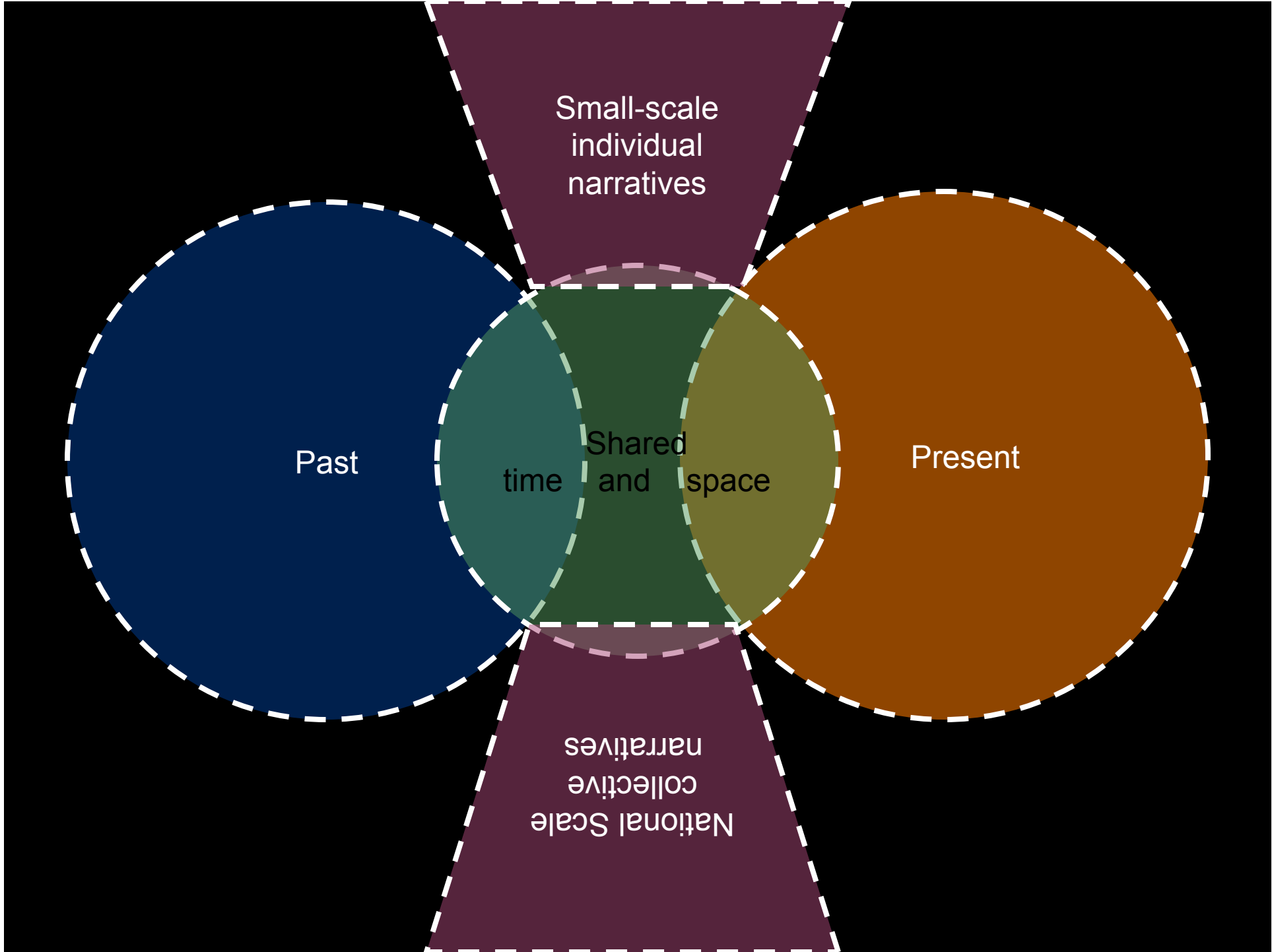


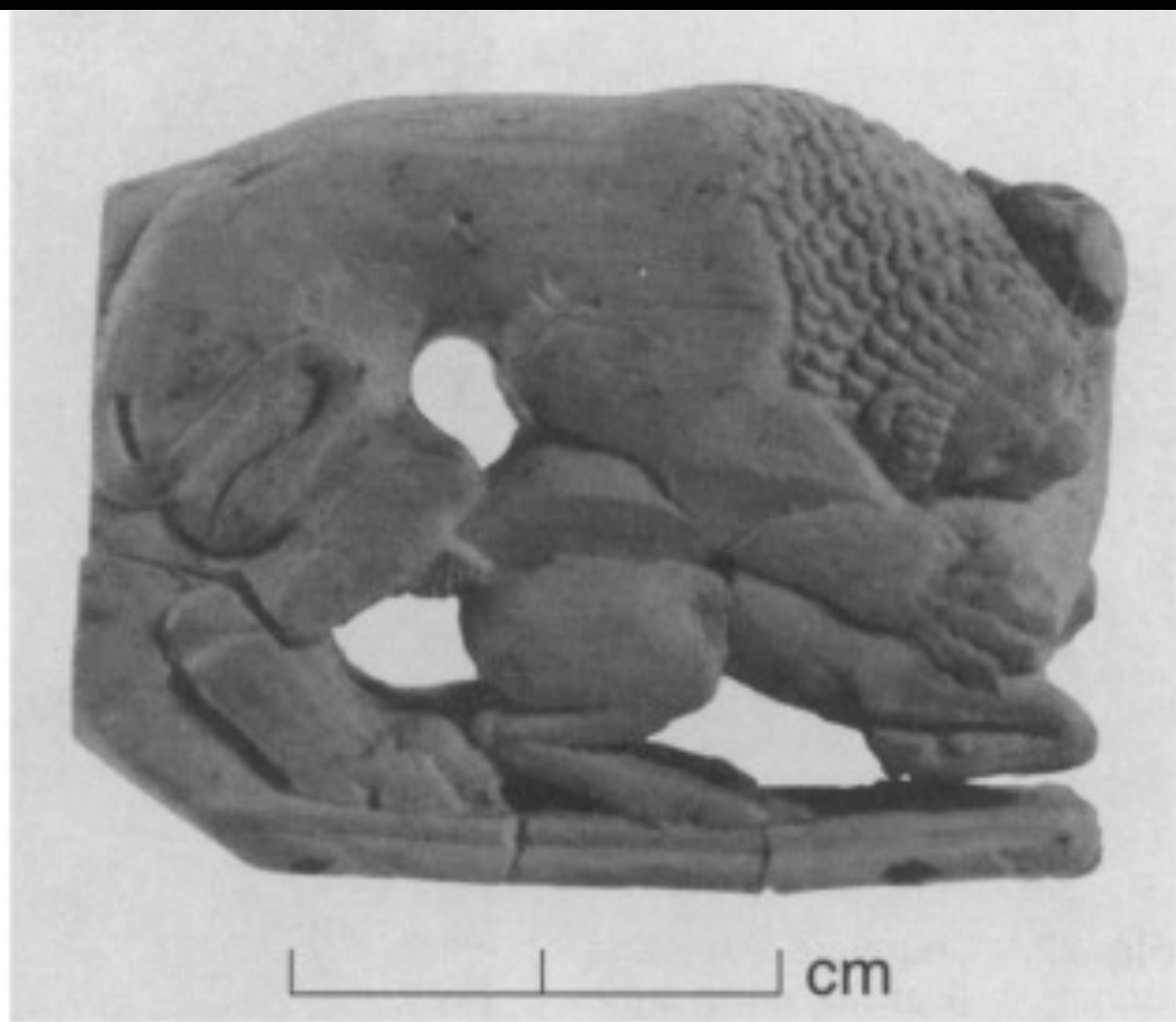
# A circuit of heritage:

Gathercole and Lowenthal 2000: 3; adapted from Hall 1997









**Fig. 19.** Ivory plaque with a lion attacking a deer (Cyprus Museum, J 592).



British colonialism “map” – Leventis Museum, Nicosia

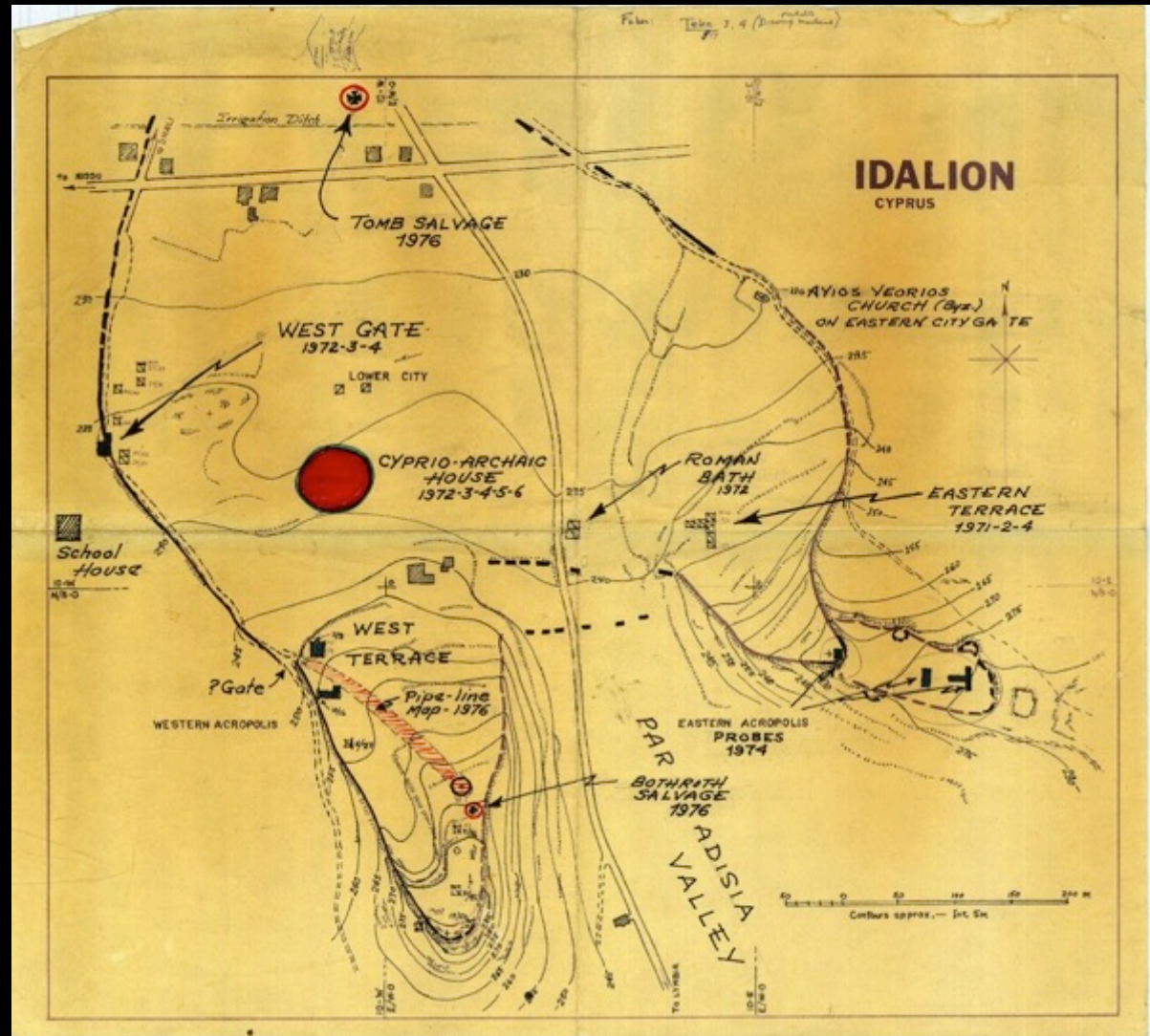






Excavations at Idalion began in the early nineteenth century under Cesnola and later Lang...

But it is the 20th century efforts at excavation and proper documentation that have made more progress towards understanding the archaeological and anthropological records.





# Acknowledgements

- University of Massachusetts Amherst Department of Anthropology:
- National Science Foundation (#OISE- 0968575)
- The White-Levy Program for Archaeological Excavation
- The Harvard Semitic Museum
- The American Expedition to Idalion
- The Lycoming College Expedition to Idalion
- The Cyprus American Archaeological Research Institute
- The Department of Antiquities of the Republic of Cyprus
- The Department of Antiquities of the Turkish Republic of Northern Cyprus