



University of  
Massachusetts  
Amherst

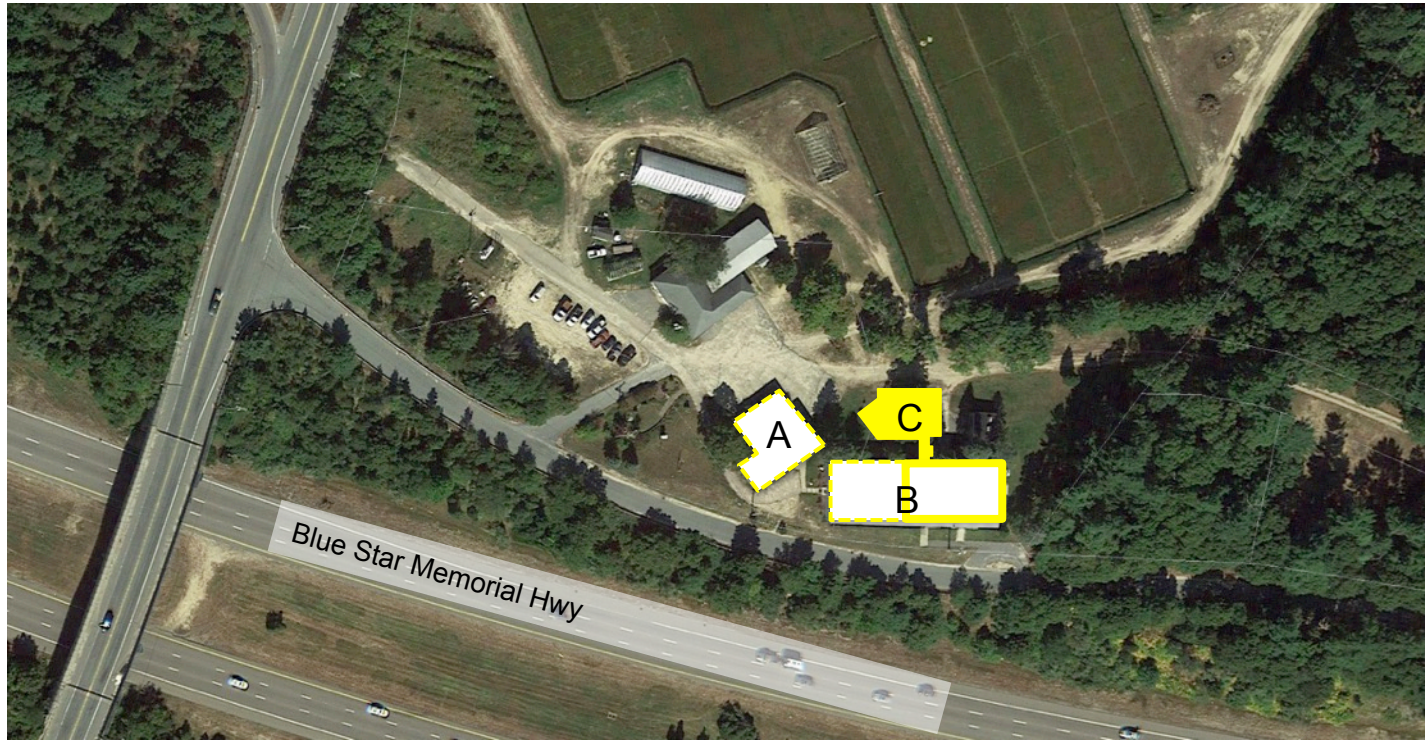
## 2021 Pesticide Safety April 27: Station Construction Update

Item Type	article;article
Authors	Sandler, Hilary A.
Download date	2025-05-17 18:42:47
Link to Item	<a href="https://hdl.handle.net/20.500.14394/8980">https://hdl.handle.net/20.500.14394/8980</a>

- Presentations posted to UMass ScholarWorks website
  - Outreach and Public Services/Extension Meetings
  - [https://scholarworks.umass.edu/cranberry\\_extension/](https://scholarworks.umass.edu/cranberry_extension/)
- Virtual Lunchtime Bogsides: Wed May 12 and June 9
- IPM Message up and running since April 9
  - On QuickLinks on right side of website homepage
  - Call 508-295-2212, x60
- Covid Update

## Project Site

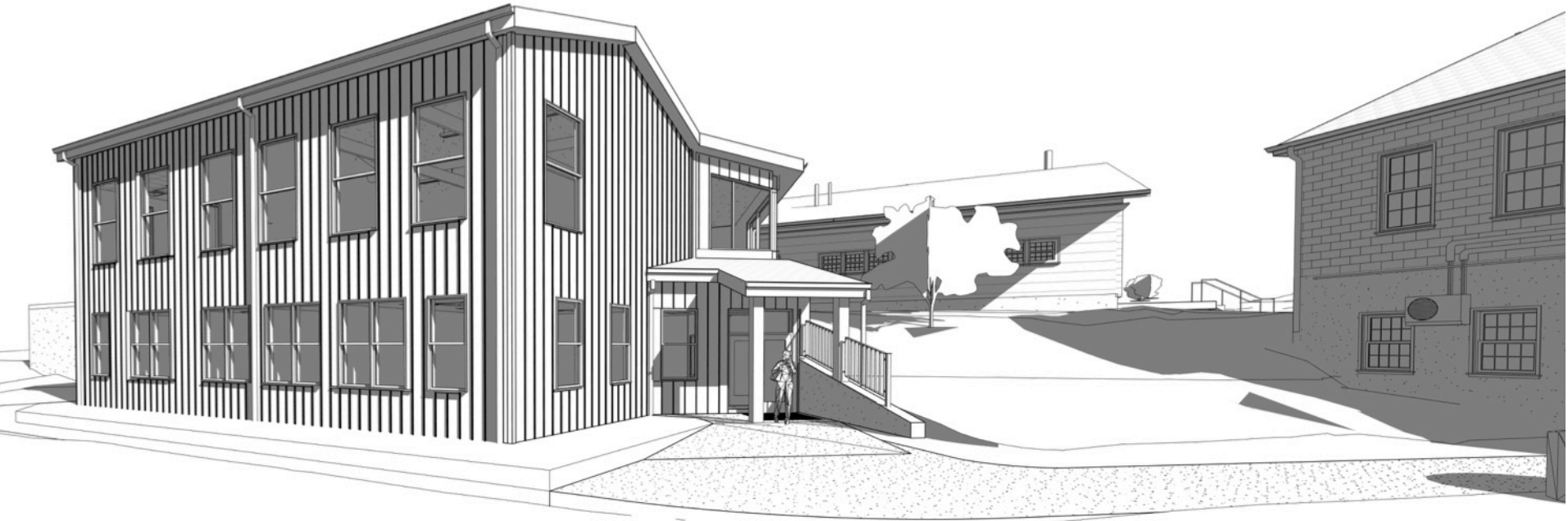
### 1 State Bog Road, East Wareham MA



- A. Existing Administration Building
- B. Existing Biology Lab
- C. Proposed REL Center

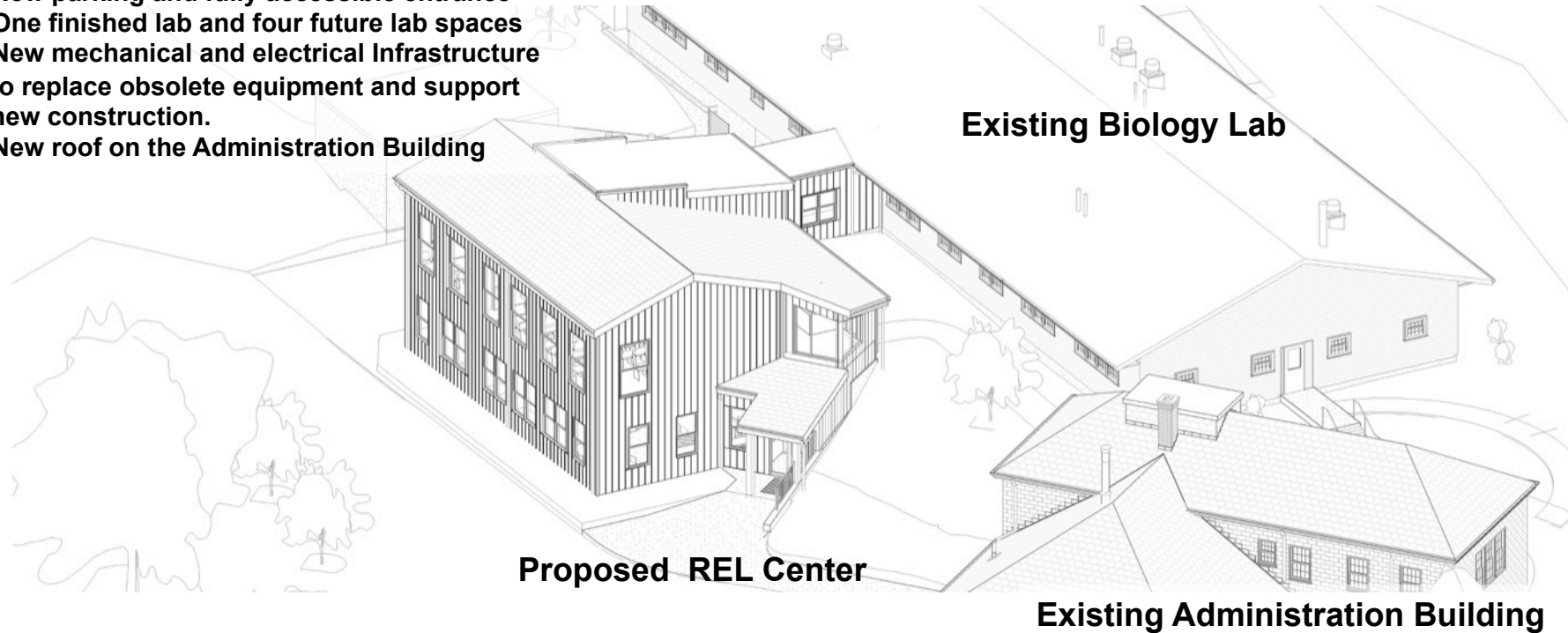
# CRANBERRY RESEARCH, EXTENSION AND LEARNING (REL) CENTER

UMassAmherst



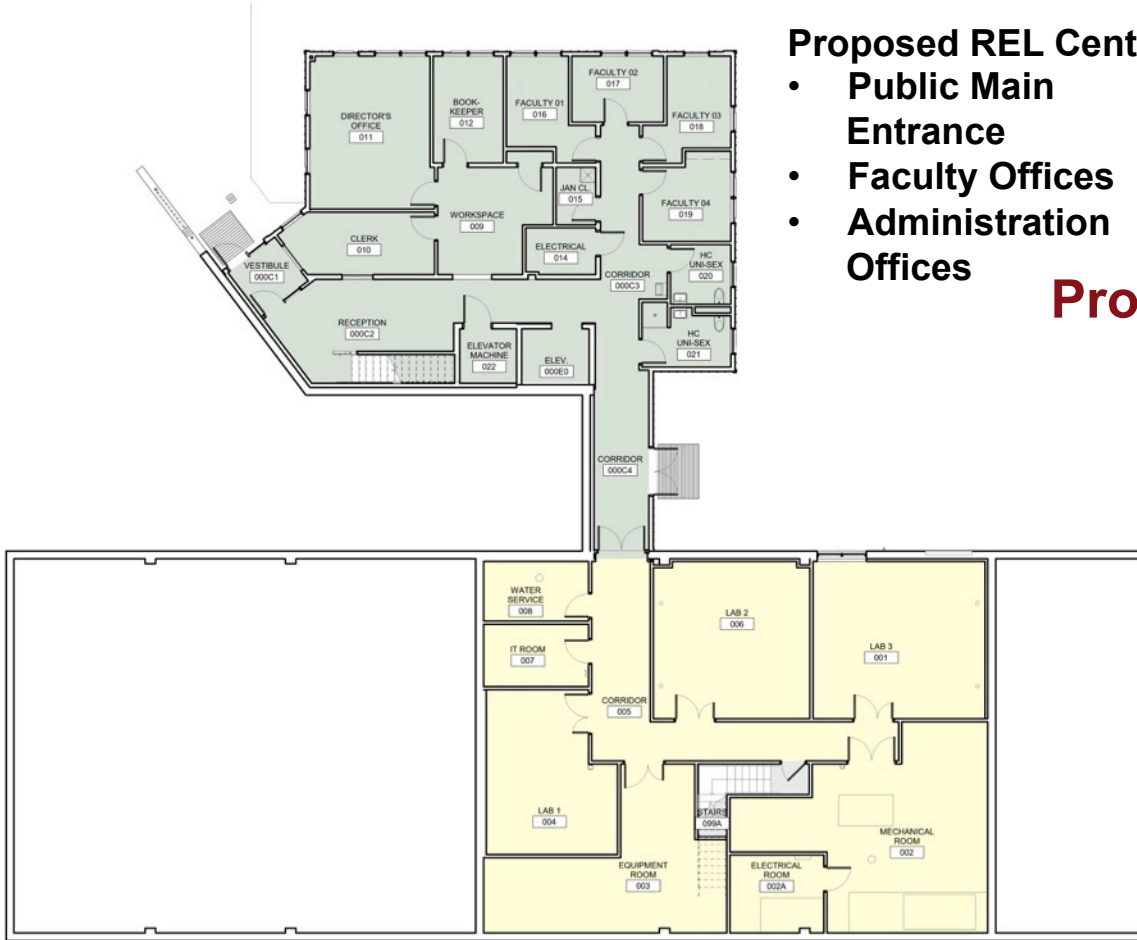
## Project Details

- New two-story construction for Conference Center, faculty and administrative offices.
- New parking and fully accessible entrance
- One finished lab and four future lab spaces
- New mechanical and electrical infrastructure to replace obsolete equipment and support new construction.
- New roof on the Administration Building



**Proposed REL Center:**

- **Public Main Entrance**
- **Faculty Offices**
- **Administration Offices**

**Project Details – Lower Level****Existing Biology Lab:**

- **Infrastructure for 3 Future Labs**
- **Research Equipment Room**
- **Mechanical and Electrical Equipment Rooms**

# Project Details – Upper Level



- Proposed REL Center**
- Conference Room
  - Break Room



## Existing Biology Lab:

- New Finished Lab
- New Future Lab Space
- Reconfigured Lab Support and Shared Equipment Rooms

# Infrastructure Improvements

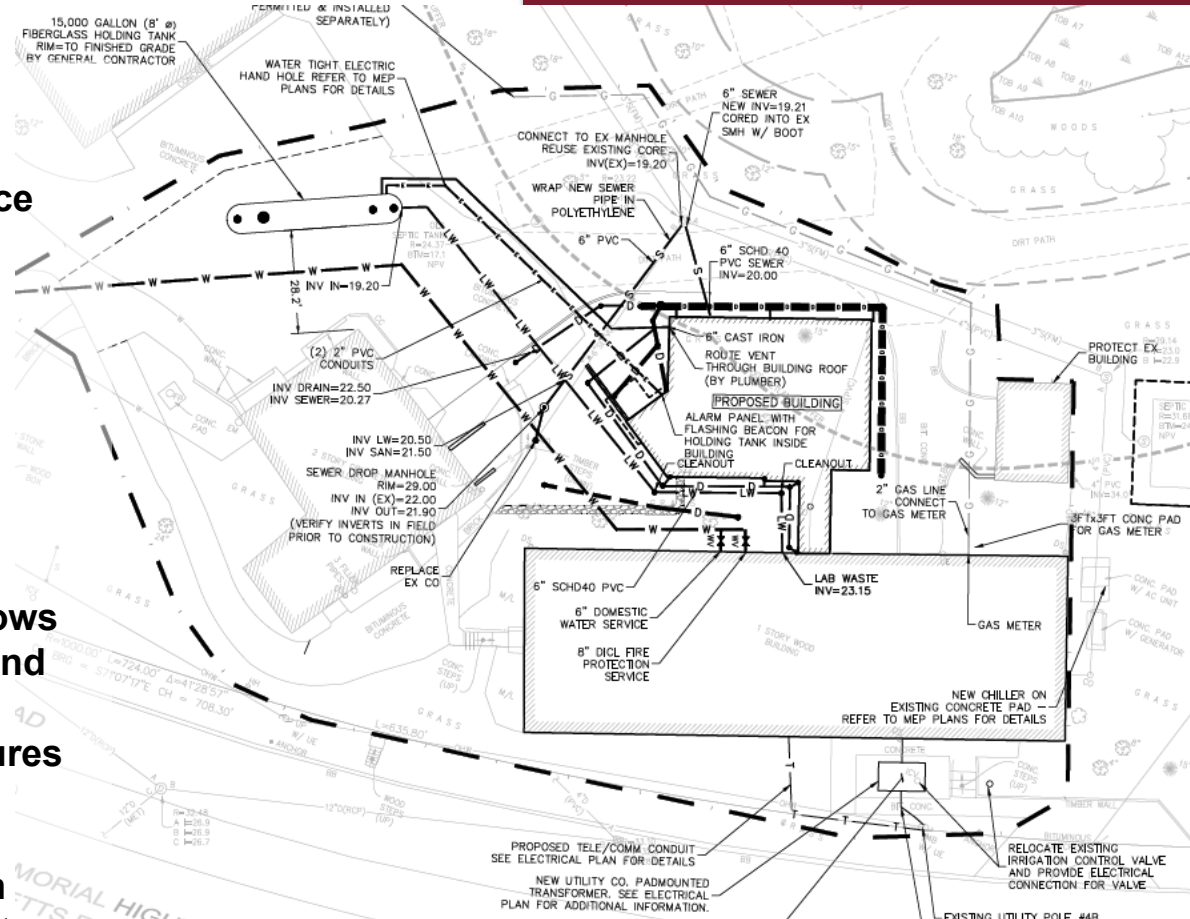
Existing Lab and REL Center

## Infrastructure and Utility Upgrades:

- Replace obsolete HVAC systems
- New electrical transformer and service
- New gas service
- New water service, fire suppression system
- Separate lab and general use water supply and waste systems
- Storage tank for lab waste

## Sustainability Features:

- Double-glazed energy efficient windows
- High-efficiency condensing boilers and water heaters
- Water saving low-flow plumbing fixtures
- Energy recovery ventilation system
- LED lighting fixtures
- Rain collection from roof to retention pond for slow release into groundwater





# Budget and Schedule

**Estimated Cost \$7.75 Million**

**State Funding: \$5.75 Million**

**Campus Funding: \$2.0 Million**

**Anticipated Construction Start – July 1, 2021**

**Anticipated Completion – June 30, 2022**



CRANBERRY RESEARCH, EXTENSION AND LEARNING CENTER

# New UMCS/ARS Grants and Scientific Growth to Serve the Cranberry Industry

- NE-SARE Late Water Project (3 yr): 1 Post-Doc, grad student
- DOE Dual-Use Solar Project (3 yr): 1 Post-Doc, grad student
- USDA-ARS Frost-Irrigation-Soil Moisture Project (3 yr): 1 Post-Doc
- USDA-ARS (2 yr): Nitrogen Cycling in Soils; Phosphorus release from Soil into Floodwaters: 1 Post-Doc each project
- USDA Hatch Project (5 years): Variety Trial on State Bog

# Hatch Project 2021-2026

**Evaluate 13 New  
Hybrid Varieties for  
Performance under  
MA Conditions**





**0701618**  
 University Of Massachusetts Cranberry Experimental Station  
 STATE  
**Map 1 of 2 - 10.97 Acres**



**EXHIBIT A**

Crop Year: 2020 / Issued: 9/28/2020

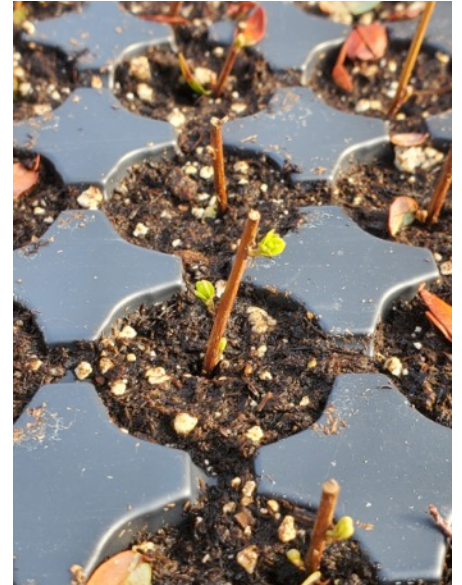
# Varieties

- HyRed
- Ruby Star
- Sundance
- Badger
- Crimson King
- Granite Red
- Midnight 8
- Pilgrim King
- Haines
- Mullica Queen
- Scarlet Knight
- Vassana
- Welker



# Schedule

- Propagating in greenhouse now
- Plant late May-Early June
- Colonizing, vine health, fruit quality for next 5 years
- Grant ends in 2026, but we will keep examining!



# Thank You

## Generous donations by:

- Oiva Hannula & Sons - trucking
- A.D. Makepeace – sand
- Sure-Cran Services – planting
- **Van Johnson** for bulldozing, leveling and coordinating everything!!

