



Chapter 3, Figure 3.7

Item Type	image:image
Authors	Tiner, Ralph W.
Download date	2026-05-10 23:06:17
Link to Item	https://hdl.handle.net/20.500.14394/50282

Baltimore, MD 3.08 +/- 0.15 mm/yr

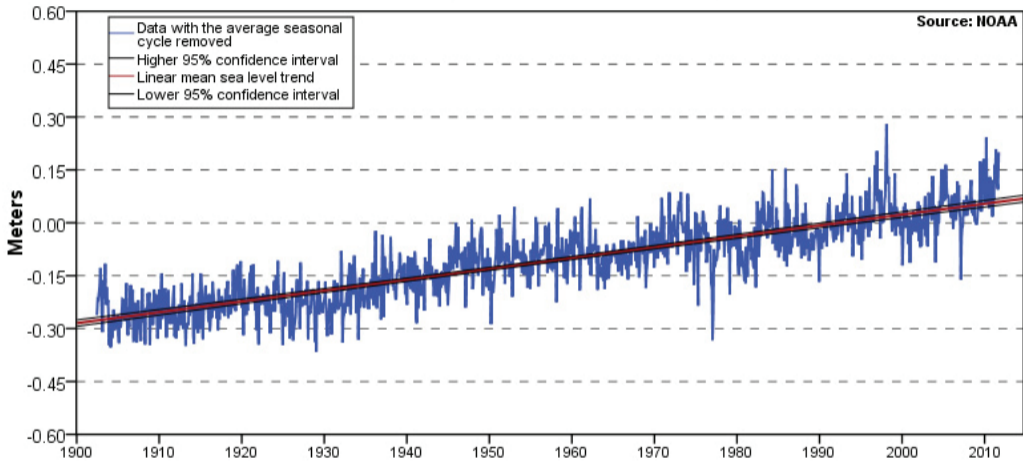


Figure 3.7. While sea level continues to steadily rise, water levels are quite variable seasonally and annually: Baltimore (MD) example. (Prepared from NOAA data)